



GRAYCLIFF
CONSERVANCY, INC.
6472 Old Lake Shore Road
P.O. Box 823
Derby, NY 14047

NEWSLETTER • SPRING - SUMMER EDITION • 2009

GRAYCLIFF WRIGHT ON THE LAKE
CONSERVANCY, INC.

ESTABLISHED TO PRESERVE FRANK LLOYD WRIGHT'S GRAYCLIFF ESTATE



DISCOVER GRAYCLIFF • "Located along the Seaway Trail, New York State's only National Scenic Byway"
National Register of Historical Places • New York State Landmark • Save America's Treasures - Official Project



Join the Graycliff Conservancy
and Enjoy Free Tours for 1 Whole Year

"Wright was inspired...
Spectacular lakefront site..."
Town & Country magazine

"Surprisingly Beautiful...
I was very impressed"
Dr. Neil Levine - Wright Scholar

RATED ★★★★★ F.L. WRIGHT FIELD GUIDE

FRANK LLOYD WRIGHT'S
GRAYCLIFF
ESTATE

6472 OLD LAKE SHORE RD., DERBY, NY
20 mins. south of Buffalo on the cliffs of Lake Erie

Tours Available Year Round by Reservation 716-947-9217

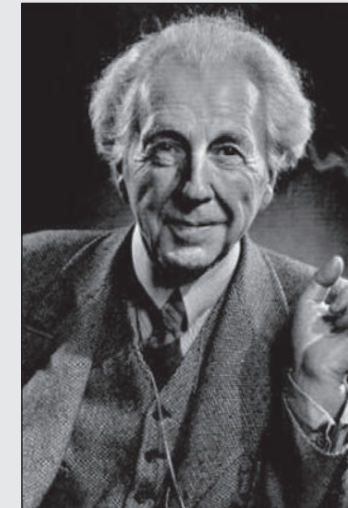
- e-mail: graycliff@verizon.net • Web: <http://graycliff.bfn.org>
- Martin House - Graycliff Joint Tour Packages also available...call for details
- **Call For Volunteers** • Join us... and discover Graycliff!
- **Tour Guides and Chaperones**-The Docent Committee provides training for interested volunteers.
- **Gift Shop**-Discover the fun of working with people and the many items in our specialty shop
- **Green Teams**-Maintaining the house, gardens and grounds
- **Special Events**-Both onsite and off.

Interested in helping? Please call us at 947-9217 or by e-mail at graycliff@verizon.net

Thanks to the following businesses/organizations for their support:

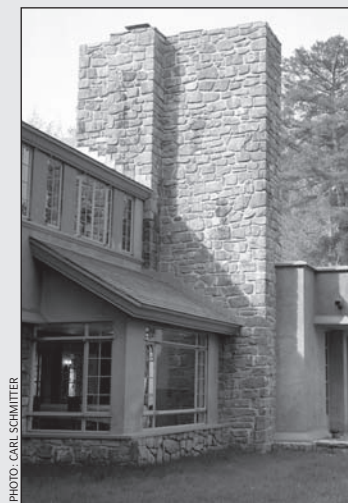
EZ Graphics, Edw. A. Habermehl Co., Lauer-Manguso & Associates, Hadley Exhibits, Scott Wood Design, Insty Prints, BCO Industries, Custom Tee Activewear, Artvoice, WNED, WBFO, Explore New York Magazine, Buffalo News, Botanicus, The Turf Doctor, Arbordale Nurseries, Chiavettas Greenhouse, The Roycroft Inn, Buffalo & Erie County Historical Society, Western New York Heritage Magazine, East Aurora Advertiser, Carl Schmitter Photography, Avenue Art & Frame, Forest Lawn, The Martin House Restoration Corporation, University at Buffalo Archives, Evans-Brant Chamber of Commerce, Hamburg Chamber of Commerce, University at Buffalo, After 50, Buffalo Rising, The Bee Publications, The Arts Council of Buffalo and Erie County, Buffalo Niagara Convention and Visitors Bureau, Town of Evans, Amherst Museum, The Roycroft Restoration Corp., Talking Leaves Books, Jim Bush Photography, Susan Eck, Chateau Buffalo Wine Shop, BRD Construction, City View Properties The Larkin Building at Exchange, Colucci and Gallagher, Cannon Design, Forever Young, and New York State Council on the Arts.

M&T Bank Funding support provided by M&T Bank and the County of Erie



■ SUMMER 2009 ■
DISCOVER
THE GENIUS
OF ARCHITECTURE
AND THE BEAUTY
OF NATURE

Join the Conservancy
and watch
Historic Restoration
in progress!



Isabelle R. Martin House

EXTERIORS COMPLETED AT GRAYCLIFF ESTATE

■ Major Restoration Reveals Wright's Vision ■

This year promises to be the most spectacular since the founding of the Conservancy over ten years ago...because the exteriors of the three Wright-designed buildings are now completely restored. "They look stunning," reports Board President Diane Chrisman, "it's wonderful that the Isabelle R. Martin House and the Foster House now join the little Heat Hut in complete restoration of their exteriors."

The tiny *Heat Hut* served as a template for restoration of the far larger *Isabelle R. Martin House* and *Foster House*, and was completed several years ago. Now all three building exteriors have been finished.

All six cantilevered balconies have been restored and reinforced; the massive stone chimneys stand tall once again, and the terraces provide a gracious welcome to our many visitors.

The roofs, now restored to their original red color as stipulated by Frank Lloyd Wright himself, contrast beautifully against the blue lake and skies and green trees. Restoration of the ginger-colored stucco put the last touches on the color palette for Graycliff, just as Wright intended.

The Foster House now looks as Wright designed it, with its Screen Wall re-installed, and garage doors with distinctive diamond shaped windows now restored and re-hung, for the first time in over fifty years.

Perhaps most importantly, scores of windows have been restored. Graycliff's signature "Diamond Window" blurs the distinction between interior and sky; the Fern Room's transparent "Corner Window" gleams anew, and bands of windows and French doors permit magnificent views of Lake Erie through the Isabelle R. Martin House itself, as well as views from the interior.

Window and door hardware that had long malfunctioned was cast to exacting specifications, replicating the originals. These were installed as work continued over the winter months.

Restoration continues on the interiors, and the installation of a new, state-of-the-art "misting" fire suppression system. We anticipate that the first testing of the system will take place shortly.

New visitors will be enthralled with the sheer beauty of the estate. Graycliff fans who have not visited recently will be as excited to see the newly completed restoration as we are.

"This should be our best tour season ever!" enthuses Board member William Wisniewski, contemplating the scope of restoration. "Graycliff has re-emerged, revealing its original splendor after many years of neglect. The vision needs less explanation ... the buildings talk to you now. If you have not visited recently, it will knock your socks off!"

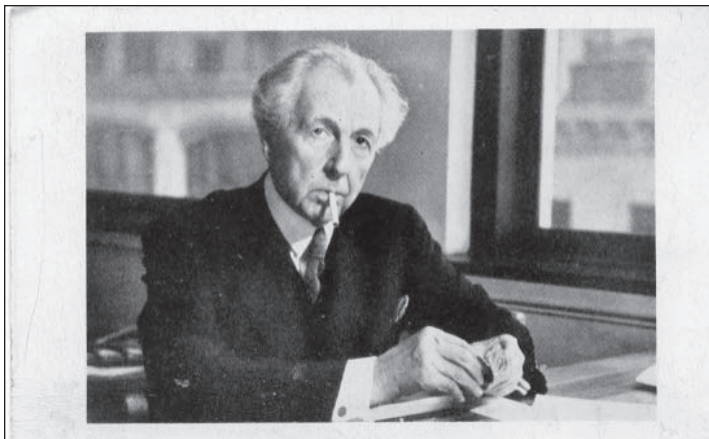
CREATIVE DESIGN COURTESY: EZ GRAPHICS • PRINTING COURTESY: EDW. A. HABERMEHL CO.
PHOTO: CARL SCHMITTER

PHOTO: GRAYCLIFF/J. BUSH

JOIN THE GRAYCLIFF CONSERVANCY & ENJOY ALL THE BENEFITS!

No matter where in the world you call "home," the legacy of Frank Lloyd Wright continues to inspire us. Graycliff is a vital part of that legacy. Won't you please help to preserve the *Jewel on the Lake* by becoming a member? It's simple: just call 716-947-9217 or e-mail graycliff@verizon.net to join, and learn more about the benefits of membership.

RATED ★★★★★ FRANK LLOYD WRIGHT FIELD GUIDE OF UNITED STATES & INTERNATIONAL SITES



Mr. Frank Lloyd Wright



Graycliff under restoration - 2006



An aerial view of Graycliff after the installation of the sgraffito mural on the two story school building - circa 1968



A bird's eye view illustration of Graycliff Estate

The Last Thirteen Years: A Look Back at Progress

Over the past thirteen years Graycliff has grown from a poorly understood compilation of additions to a clear realization of a natural house, part of an entire complex of buildings and landscapes. The transformation was accomplished by a grass roots band of naive enthusiasts that had no idea how slim the likelihood of success was.

At the 1997 conference of the *Frank Lloyd Wright Building Conservancy*, a commonly heard opinion by conference attendees was that Graycliff, the summer residence of Darwin and Isabelle Martin was of no significance in the work of Frank Lloyd Wright. After 46 years of alterations and additions by owners who shared few requirements of the original residents, only a diehard supporter of Wright's work might have disagreed. Regardless, Graycliff was of special interest to me. As the least known of Wright's designs realized in Western New York, Graycliff held interest due to the lack of understanding of its place within the architect's body of work and the realization that few others paid it any attention.

A term paper as part of a second year college course taught by *Jack Quinan* at the State University of New York at Buffalo gave me a reason to further investigate the little known structure. Bits of conflicting information were obtained from the Hungarian and Polish Priests that occupied the complex. I had visited several hundred Wright structures by this point and similarities were noted to a number of realized or unrealized designs by Wright. These similarities formed the basis of the paper. Dr. Quinan's course was an inspiration for a lifelong desire

to experience Wright's work

In 1992 Wright scholar, architecture professor and author *William Allin Storrers* request, my soon to be wife, Karen and I field measured the Isabelle R. Martin House for its first as-built plan in the publication, *The Frank Lloyd Wright Companion*. My wife still recalls the many mosquito bites received while measuring through the brush that surrounded the house.

I graduated from architectural school and was licensed as an Architect in 1993. In December 2006, a client mentioned that Graycliff was listed for sale as the Piarist Fathers had little use for the property. Developers offered to purchase the property but demolish all the structures. I became the Vice President of the Graycliff Conservancy, the organization first dedicated to averting the structures demolition and eventually acquiring and restoring the complex.

Public tours were established while the priests lived at the property in 1998, at the suggestion of architectural historian and Graycliff advisor, *Jason Aronoff*. The tours provided funds for a down payment and raised awareness of the project. A side benefit of operating tours while the Piarist fathers occupied the estate was the friendship that developed between Priests and volunteers. The many hours spent at the site allowed most of the volunteers to realize the strong bond the priests had with the sense of place at Graycliff. Their great interest in the survival of that place was very evident.

The property was listed on the *National Register of Historic Places*

with the help of *Marge Quinlan*, *John Conlin*, *State Historic Preservation staff* and me in order to qualify for public grants. Using the scores of photos taken on previous visits, as well as the letters of the Martin-Wright correspondence held at the State University of New York at Buffalo's Archives, a historic structures report was completed by *Bero Associates*. The report documented any known design documents relating to the complex. A phased approach to restoration was adopted using the recommendations and budget estimates within the report. The report, which Rochester, N.Y. architect *John Bero* admits he lost money producing, has been the single most cost effective investment in the project, *thanks again John*.

The restoration has proceeded through three phases which to date have eliminated non-contributing structures, completed exterior restoration of the buildings, begun to restore the interiors, and provided the public with support spaces outside of the historic structures.

This fall the *Frank Lloyd Wright Conservancy Conference* returns to Buffalo for the first time since 1997. Some of the same scholars that had little interest in Graycliff now realize its great importance in Wright's work. The Graycliff Conservancy is pleased to be able to display the progress made in the last decade to the most discriminating and highly educated audience of Wright enthusiasts on the planet. The conference is set for October 6-11, 2009 and will include visits to most Wright designed properties in the area as well as other cultural attractions. Western New York has greatly enhanced its Frank Lloyd

Wright designed attractions since 1997 and this will be an opportunity for several organizations to reflect on their accomplishments. Graycliff is especially proud of the band of enthusiasts and the small number of foundations that believed in them to make this happen.

Work is still underway on the property, although the storage trailers present through the most intense periods of restoration have been removed to improve the views this season. The fire protection system within the *Foster House* has been largely installed and will soon begin operational testing. Hardware is being finalized throughout the complex, always one of the last phases of a restoration due to the exacting standards of quality required. The search continues for funding to continue interior restoration with one of the first steps being the restoration of the striking Cypress plank floors on the first floor.

In preparation for the fall conference, an exhibit is being developed with Graycliff's Education Committee featuring postcard images of Wright designed structures. These images range from early in the 20th century to today and will place Graycliff in the context of Wright's entire career (see 4 postcard samples below).

The Frank Lloyd Wright Building Conservancy Conference this year will provide a fine opportunity to reflect on how much has been achieved to interpret how Graycliff now fits into the Wright legacy and to anticipate the completion of the total restoration.

Patrick J. Mahoney, AIA, NCARB
Vice-President, Chair of the Design Committee

■ Frank Lloyd Wright in Postcards ■



A mass produced advertising postcard distributed after Larkin Company tours to visitors. The Frank Lloyd Wright designed administration building is at the lower right.



A rare lakeside postcard view of one of the group of summer houses by Frank Lloyd Wright on Lake Delavan in Wisconsin.



An interior view from the 1920's of the Imperial Hotel in Tokyo complete with furniture designed by the architect.



The Bradley residence in Kankakee, Ill. Is one of the earliest examples of a prairie house. The gable roof of this house has a simple oriental quality.



A Special Salute to the Graycliff Volunteer Docents

As the cold winter months gradually give way to warm weather once more, I want to take a moment and look back at 2008 and thank all those wonderful folks who serve as the face of Graycliff to our visitors from all over the world. 2008 truly was a great year for our docents – but it was also a year with a just touch of sadness for the docent program.

It was with regret that we received the news that our long serving docent co-chairs, *Anita Mitchell* and *Annagret Richards*, would no longer be leading the docent program. Anita and Annagret have made an invaluable contribution to Graycliff over the years, both as training coaches, and docents who lead tours. Each has shared her vast knowledge of the Martins, Wright and Graycliff, as well as contributing innumerable hours of volunteer service, to the betterment of this amazing property. Anita has an encyclopedic knowledge of the Martin family which is an asset beyond calculation to our “docent pool’s knowledge” of the Martins, and how they lived and enjoyed their summers at Graycliff. Annagret’s knowledge of the architectural style of Wright, as well the wonderful stories of her personal experience living in a Wright house (*for those who do not know, Annagret lived in the Darwin D. Martin House while it was owned by the University of Buffalo*), have not only educated... but also inspired many a docent.

Over the years, these two individuals are responsible for the training and certification of 32 docents. They have personally touched the lives of many a docent throughout the years. Thank you ladies, for everything you have done to help make Graycliff such a special experience, and for proving once more that Graycliff is a place where one person can make an important difference.

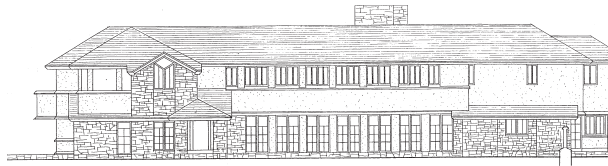
On a happier note, in 2008 we produced the largest number of docents certified in one year since docent certification began in 2004. Ten docents completed their certification tours during July and August. A special bonus is that one of these docents will be able to offer tours in Japanese, helping in the long run to expand Graycliff’s international profile. These ten new docents gave a total of 158 tours between July and November, over one quarter of the tours offered during that time. A special thanks goes out to one member of that class, *Bev Nanno*, who gave 32 tours during those months.

I also want to take a moment to thank those amazingly dedicated four docents who gave over 20% of all the tours offered during the 2008 season. The Conservancy offers many thanks to *Marcy Workman*, *Tom Alcamo*, *Tom Browne* and *Dick Hiestand*. *Marcy Workman* alone gave an astronomical 69 tours! All in all, 51 fantastic people gave of their time to conduct *Standard*, *Extended*, *V.I.P.*, *Trolley*, *Photographic* or *Sunset Tours* during 2008. None of this would be possible without the generosity of these great folks. I wish I had room here to thank them each personally.

With another exciting year of docent led tours on the horizon, I am eagerly preparing for a new docent class to begin. This year we will be expanding the number of talks and topics offered to our new docents, including presentations by Graycliff Conservancy founder *Carol Bronnenkant*, Vice President of the Graycliff Conservancy *Pat Mahoney* and Darwin D. Martin House Curator *Eric Jackson-Frosberg*. We will also be offering tours of the Darwin D. Martin House and adding a tour of the Roycoft Campus. Additionally, Anita Mitchell will return to offer the class a presentation on Isabelle R. Martin. We are confident that this varied and exciting curriculum will deliver another well-prepared and well-rounded group of people to our active docent pool.

2009 promises to be a big year for Graycliff, thanks to Buffalo being cited by both the *New York Times* and *The National Trust for Historic Preservation* as a premier destination. This combined with the annual *Frank Lloyd Wright Building Conservancy Annual Conference* being held in Buffalo this coming October, will give our docents a chance to once again show the world the wonders of this astonishing estate. But more importantly, it will be a big year for Graycliff because we are blessed with the greatest volunteers around. Hats off to all of those magnificent docents who have made the past a success and will make the future even brighter by continuing to share their love of Graycliff with our visitors. One can well imagine just how proud Isabelle would be of them all.

– Scott Schultz, Chair, Docent Training, Graycliff Conservancy



ESTABLISHED TO SECURE & PRESERVE FRANK LLOYD WRIGHT’S GRAYCLIFF HOUSE & ESTATE

□ □
□ □

A MESSAGE FROM THE PRESIDENT

□ □
□ □

Welcome to New Members on both Board of Directors & Committees

Recent growth of our volunteer commitment is especially rewarding

The 2009 season looks promising for the directors, volunteers and members of the Graycliff family, as we welcome a new director, acknowledge the contributions of old friends and look forward to the energy and excitement generated by two terrific, new committee co-chairs.

Recently, the Board welcomed new Director *Barbara Harder*, who brings to the Conservancy a strong background of community service and board experience. Barbara served seven years on the Board and as Treasurer of the Southtowns Montessori School and the same number of years on the Board of the American Red Cross, serving both as Secretary and Treasurer. She was on the Finance Committee of the Western New York Women’s Fund and, most recently, has been on the Board of Regents of Canisius College. Her zest for historic preservation will be put to good use as the Graycliff Conservancy moves ever closer to bringing work on Frank Lloyd Wright’s notable “organic” house to completion.

While appreciating the enthusiasm and vibrancy a new Director brings to the Conservancy, it’s always a pleasure to recognize the extraordinary service of long-standing Board members. Such an individual is *Sharon Osgood*, who recently represented Graycliff at the *Grove Park Arts & Crafts Conference*. Along with pictures of the beautiful exhibit she designed, Sharon’s description of the conference is detailed in her article included in this issue of the Newsletter. When you read it, you’ll surely be tempted to join us in

Asheville next year.

Conservancy members were more than disappointed last fall, when Chair of Docent Training *Anita Mitchell*, who had instructed many classes of trainees, announced that she would no longer continue serving Graycliff in that capacity. To understand our disappointment, you would have to know how committed, knowledgeable and charming Anita is and how much our docents rely on her for guidance and support. However, even as she stepped down as chair, she promised to assist with certain segments of the program, especially the training sessions and tours that enable her to share her vast knowledge of Isabelle Martin and other members of the Family. Most recently, *Annagret Richards* had assisted Anita, and her expertise will be missed as well.

Fortunately for Graycliff, Anita has turned over her training materials to an individual who is more than ready to carry on the tradition of excellence in docent training. *Scott Schultz* is chairing the 2009 training program and has already demonstrated his dedication, organizational skills and, most importantly, his passion for Graycliff.

Serving Graycliff as Board president has always been a pleasure, but the recent growth of our volunteer commitment is especially rewarding as is our annual rite of re-connection with all of our members as we participate in our “Spring Clean-Up” and enter another season of welcoming visitors to our architectural treasure.

*Diane Chrisman, President
Graycliff Conservancy*

■ A SPECIAL NOTE OF THANKS ■

THE GRAYCLIFF CONSERVANCY APPRECIATES THE GENEROUS SUPPORT OF THE DEPARTMENT OF THE INTERIOR, NATIONAL PARK SERVICE-SAVE AMERICA’S TREASURES PROGRAM, THE NEW YORK STATE ENVIRONMENTAL PROTECTION FUND, NEW YORK STATE STRATEGIC INVESTMENT PROGRAM AND THE NEW YORK STATE CLEAN WATER/CLEAN AIR BOND ACT, THE COUNTY OF ERIE, AND TOWN OF EVANS AS WELL AS SIGNIFICANT FUNDING FROM THE BAIRD FOUNDATION, EAST HILL FOUNDATION, FIRST NIAGARA BANK FOUNDATION, GANNETT FOUNDATION, HODGSON RUSS ATTORNEYS LLP, SEYMOUR H. KNOX FOUNDATION, SAMUEL H. KRESS FOUNDATION, JAMES H. CUMMINGS FOUNDATION, THE MARY K. MAHLEY FAMILY FOUNDATION, M&T BANK, THE JOHN R. OISHEI FOUNDATION, PHYLLIS W. PIERCE CHARITABLE LEAD ANNUITY TRUST, NEW YORK STATE COUNCIL ON THE ARTS, THE MARGARET L. WENDT FOUNDATION, DOROTHY PAYNE FUND, UNITED STATES DEPARTMENT OF TRANSPORTATION THE PAUL J. KOESSLER FOUNDATION AND COMMUNITY FOUNDATION OF GREATER BUFFALO.

■ THANK YOU ■



BOARD OF DIRECTORS

- Diane Chrisman
President
- Patrick J. Mahoney, A.I.A.
Vice President
- Stanton H. Hudson, Jr.
Vice President
- Lester Rickard
Recording Secretary
- Charles Wilson
Treasurer
- Gregory Bernas
Joseph A. Blatz
Sandra L. Brant
Thomas J. Carleton, P.L.S.
Charles A. LaFevre, ASA
Harvey Garrett
Barbara Harder
Jessica Hearst
Russell Maxwell
Richard E. Minekime
Steve Musso
Sharon Osgood, Esq.
Diane Schrenk
Catherine F. Schweitzer
Barbara A. Seals Nevergold, Ph.D.
Clifford E. Whitman
William A. Wisniewski

HONORARY BOARD MEMBERS

- The Rev. Margaret R. Foster
- Darwin Martin Foster

ADVISORS

- Jason Aronoff
- Carol A. Bronnenkant
- John H. Conlin
- Jack Quinan
- Marjorie L. Quinlan
- Douglas Swift

EXECUTIVE DIRECTOR

- Reine Hauser

BURNISHING THE JEWEL

Your Financial Support is Vital!

Funding-already secured-must be matched with private contributions for Graycliff’s restoration to continue apace.

Crucial Projects in need of Immediate Funding:

Restoring the Interior of the Isabelle R. Martin House

Procuring Interior Furnishings

Strengthening On-Site Operations

Please contribute-all donations are tax-deductible

**For information:
716-947-9217**



! Anyone for Anchovy Ice Cream?

Graycliff membership offers a number of benefits, including free tours, a discount in our gift shop, and free or reduced admission to educational events, among other things.

But what is it that you, as a member, like the most? What new benefit would you like to see us provide?

A free mug? A new T-shirt? Maybe time to just sit by the lake and enjoy the architecture and nature? Or something else entirely?

We don’t think you’ll want us to offer free anchovy ice cream, but you might have a great idea or two.

Please let us know by e-mail at Graycliff@verizon.net (put “member idea” as the subject), drop us a line by mail, or even give us a call (716) 947-9217. We’d love to hear your suggestion (although we might not be able to honor all ideas).



2009 Arts & Crafts Conference at Grove Park Inn Graycliff, Martin House & Roycroft Share Exhibit at Prestigious Event

Graycliff's View Room (a/k/a) *The Fern Room*, came alive recently in Asheville, North Carolina. Invited along with the *Darwin Martin House* and the *Roycroft Campus Corporation* to participate at the *2009 Grove Park Inn Arts and Crafts Conference*, the three sites created a special exhibit entitled *A Century of Arts and Crafts in Western New York State: From Roycroft to Wright*.

Each site set up individual exhibits to introduce the hundreds of visitors to the *Taft Room* to a representation of key elements of each site, stressing each site's unique features. The Roycroft Campus Corporation, represented by its Executive Director, *Christine Peters* and Roycroft Innkeeper, *Martha Augat* created a Mission style exhibit with table, chair, lamps, photo of *Elbert Hubbard* and art work. The Martin House, represented by its Executive Director *Mary Roberts*, brought an original *Tree of Life Window*, a dining room table stanchion, a lamp, and interior and exterior photos of the house.

Graycliff, represented by Board Member *Sharon Osgood*, recreated the *Fern Room*, making it appear that *Isabelle Martin* just got up from her wicker chair a moment before and would be right back. Board Member *Patrick Mahoney* took a photo of the *Fern Room* looking directly at the corner where the windows meet in such a way that one is scarcely aware of the corner. *Bill Wisniewski*, another Board Member, arranged for a three-foot by five-foot blow-up of the photo which became the back drop for the exhibit. Cane tables from the house and a wicker chair borrowed from the *Roycroft Inn*, together with a lamp from the house and live ferns were placed in front of the photo. An open Roycroft book with antique glasses laying on it and photos of *Isabelle* and *Darwin* graced one of the cane tables. The other cane table was decorated with a piece of Arts and Crafts pottery, a Belle pattern dessert plate complete with a piece of pie and cup and saucer.

Across from this reading scene – which stressed the design feature of the house so desired by *Isabelle*, namely lots of light – was the Wright designed library table and lamp that sat on it when the Martins lived there. Each site displayed its own china pattern and shared a joint gift shop.

The magic of the Taft Room exhibit, however, is the way it told the story of the *Larkin Soap Co.*, and its C.E.O., *Elbert Hubbard* (who left to create the Roycroft Movement), followed by *Darwin Martin* who brought *Frank Lloyd Wright* to town. Wright, of course, designed the *Larkin Administration Building*, and homes for the Martin family and other Larkin executives. A large display case contained artifacts from the *Larkin Soap Co.*, and *Roycroft* as well as correspondence between Martin and Wright. In terms of Wright's career, the exhibit contrasted one of the greatest of the Prairie Houses, the Martin House, with the first of his natural house period, *Graycliff*, which became a precursor to the most famous of Wright's homes, *Fallingwater*. Greeting all the visitors at the door was *Ed Healy* of the *Buffalo Niagara Convention and Visitors Bureau* who handed out literature about Western New York. The Bureau also prepared a wonderful slide show telling the story of the three sites, which played continuously in the Taft Room.

The Conference consists of a huge Arts and Crafts antique sale, displays and sale of contemporary Arts and Crafts items, special exhibits, group seminars and evening lectures. Many hundreds of people from around the country attend. They tend to be well-informed and interested. As a result, a lot of questions were asked about Graycliff and a lot of promises made to visit. Uniformly, the visitors commented on Graycliff's beauty. *The Grove Park Inn* was built in 1913 and is furnished with a large amount of Roycroft furnishings as well as other Arts and Crafts furniture and decorative items. The first Arts and Crafts Conference at Grove Park Inn occurred in 1988, organized by *Bruce Johnson*, after having been held for a member of years at the *Roycroft Inn* (East Aurora, NY) while it was still owned by *Kitty Turgeon*.

This year the conference was particularly focused on Western New York since Turgeon was given the prestigious *Lifetime Achievement Award*. Selected by a committee of collectors, curators and publishers, the criteria for the award are at least 25 years in the *Arts and Crafts Movement* and participating in education of the *Arts and Crafts Movement* through speaking, publication and research, participation in museum exhibitions, and involvement in the conference.

Other Western New York highlights included a preview of the soon to be broadcast *WNED-TV* documentary, *Elbert Hubbard and the Roycrofters*, presented by its producer, *Paul Lamont*. Co-curator of the *Elbert Hubbard Museum* in East Aurora, *David Komacki*, spoke on the *Roycroft Copper Shop*.

Others who assisted with selecting and transporting items to and from Graycliff to the collection point at the *Roycroft Copper Shop* (to be trucked with the other site's furnishings) were Board President *Diane Chrisman* and Board Secretary, *Les Rickard*. Rickard also designed and arranged for the special packaging to protect the furniture and lamps.

Special thanks to all who contributed time and effort to make this such a successful event.



PHOTO: CARL SCHMITTER

A Brief History to Welcome Visitors to Graycliff

A magnificent estate designed by Frank Lloyd Wright, Graycliff is perched high on a bluff overlooking Lake Erie. With grounds and gardens designed by Wright, Graycliff's three superb buildings are nestled amidst trees and pond, fountain and stone walls. Although only a brief and scenic twenty minute drive along the lake from downtown Buffalo, visitors arriving at Graycliff enter a tranquil, pastoral setting that feels far from the cares of the work-a-day world.

The client of record for Graycliff was *Isabelle R. Martin*, and Frank Lloyd Wright designed Graycliff for her pleasure. Designed and constructed between 1926 and 1931, Graycliff is an important example of Wright's mid-career "Organic Design." Sweeping views across the lake to Canada, of downtown Buffalo, and of Graycliff's own expansive grounds are visible from every vantage point: through ribbons of windows, from cantilevered balconies and across stone terraces.

The Graycliff Conservancy, Inc., a non-profit organization dedicated to the preservation and restoration of the Graycliff Estate, celebrates its tenth anniversary in 2009. Amazingly, just ten short years ago, Graycliff was in danger of demolition to make way for condominiums on our prime, lake front location. Remarkably, a corp of community members mobilized, and began the successful project to raise funds to purchase the property, begin restoration and institute tours and

other public program—and the Graycliff Estate was saved!

Prior to its purchase by the Conservancy, Graycliff was "hidden" to the public and architectural experts for the previous fifty years. Now, the Graycliff Estate is open for tours, all exterior and structural restoration has been completed, and architectural historians are reappraising Graycliff's importance within Wright's oeuvre.

Astonishingly advanced for the 1920s, Wright designed the *Isabelle R. Martin House* at Graycliff to be transparent. Visitors can actually see through the house to the lake beyond. This glass pavilion ensures that the house is flooded with light, and that the architecture itself is light and airy.

A salient feature of this period of Wright's career is the complete integration of buildings with landscape. Wright conceived of Graycliff as an entire complex of grounds, gardens and buildings. The corner windows, extensive balconies and inviting stone terraces open the building directly into the verdant landscape, and visitors enjoy the experience of being both inside a building and in the landscape simultaneously.

Imagine yourself in mid-swing on the Wright-designed Tennis Court. Or imagine enjoying luncheon with *Isabelle Martin* on the graceful Esplanade. Stroll the grounds to the sound of waves on the shore, birds singing each to each, and the breeze gently

rustling the trees. Linger on a terrace to enjoy the views. Graycliff is open for tours daily from Memorial Day to Columbus Day, and daily except Wednesday in April, May, late October and November. *Yuletide Tours* take place during the December holidays; there is a reduced tour schedule in the winter months. Please see Graycliff's website at <http://graycliff.bfn.org> for information on tours, special activities and packages. Reservations are necessary for all tours, which allow us to keep each tour intimate and enjoyable in scale. Please call 716-947-9217 or email graycliff@verizon.net for reservations and information.

In autumn, *Sunday in the Country* offers brunch at the renowned *Roycroft Inn* in East Aurora, NY, a trolley ride to Graycliff, and a tour of Graycliff before returning by trolley to the Inn. These popular jaunts, on select Sundays as the leaves are changing color, sell out each year; please reserve your spot early!

Graycliff has ample free parking and an attractive Pavilion for visitors with an exhibition about the construction of Graycliff. The Pavilion gift shop is replete with lovely gifts, home décor, jewelry, tableware and the like, many designed exclusively for Graycliff. We hope you will join our visitors from across the country and around the globe in witnessing the rebirth of the Graycliff Estate, and help us celebrate our tenth anniversary!

Reprint: The Fra – Roycroft Campus Corp. 2009



PHOTOS: SHARON OSGOOD





PHOTO: CARL SCHMITTER

From the Lake Side: A Message From The Executive Director

Rabbits are some of the Graycliff Conservancy's most devoted admirers. Although they don't seem to be particularly interested in Wright's innovations for Graycliff buildings, our bunnies are highly appreciative of Wright's landscape designs, as well as those of famed landscape architect Ellen Biddle Shipman.

Conservancy plans are moving forward to restore the landscape as it was while Isabelle and Darwin Martin were in residence with their family. Their grandchildren, *Margaret Foster* and *Darwin Martin Foster*, have many fond memories of playing on the expansive lawns and watching lively matches on the tennis court. With support from *M&T Bank*, *Schichtel Nurseries*, the *Phyllis Wendt Pierce Charitable Trust*, *Charles Balbach*, *The Cameron Brown Fund* and other friends, we are growing ever closer to fulfilling this dream.

The bunnies are great admirers of the efforts of *Graycliff's Green Team* volunteers which keep the lush grounds looking ever lovelier in the meantime. Aply led by Board members *Clifford Whitman* and *Richard Minekime*. Green Team members, especially *Dale* and *Kathy Marriott*, *John Michaels*, the wonderful *Town of Evans Garden Club* and many others, deserve a big round of applause.

Although far too shy to actually take a tour with one of Graycliff's stellar docents, the rabbits do look on admiringly as they enjoy their grassy luncheon. Volunteer Co-Chairs *Marion Schmidt* and *Carol Wahlenmayer* work closely with all volunteers, and *Scott Schultz* Chair of Docent Training, have strengthened the training process as we do annually. The Conservancy benefits greatly from all of their efforts. Special thanks to *Cheryl St. George*, a former Board member who remains an active volunteer, for the wonderful job she does organizing both *Spring Clean Up* and our *Volunteer Appreciation Dinner*. Long time volunteers like *Margaret Santi*, *Joyce Herold*, *Tom Alcamo*, *Lorraine Sandow*, *Phyllis Weyer*, *Jim Beardsley*, *Corinne Arcangel*, *Joan Osborne*, *Tom Browne* and many others are joined by terrific "newbies" like *Nancy McNaughton*, *June Crawford*, *Cheryl Lickfeld*, *Wendy Duignan*, and *Judy Jones*...just to name a very few! To each of them, and to each and every Graycliff volunteer, please know that you are the heart and soul of Graycliff.

Much "behind the scenes" work, on Governmental Relations with

Russell Maxwell and *Sandra Brant*; with Development Events, led by *Craig Harris*, *Jessica Hearst*, *Jeff Andragna* and *Antoinette Forth*; with Advancement thanks to stalwart Board members *Catherine Schweitzer* and *Stanton Hudson*; Governance with members *Mary Ann Kresse* and *Neil Melbrod*; with Restoration, led by *Patrick Mahoney*, *Tom Carleton*, *Gregory Bernas* and *Joe Blatz*; is all accomplished with little fanfare despite its vital importance to the Conservancy. The Gift Shop Committee, with *Marcy Workman*, *Jessica Hearst*, *Katie Henneberg* and *Tammy Greynolds* is introducing many new products this spring. *Shannon Lyons* and *Ingrid Luongo* work quietly behind the scenes on visitor services and development. Graycliff's Finance Committee, led by Treasurer *Chuck Wilson* and his band of financial experts *Charles LeFevre*, *Steve Musso*, *Richard Minekime* and *Lester Rickard* keep us on the right track. The Education Committee, led by Chair *Diane Schrenk*, has created the Graycliff Speakers Bureau that will debut this year. Human Resources, led by *Barbara Nevergold*, is nearing completion with a new Employee Handbook, and *Harvey Garrett* is guiding us in a new strategic plan. The Marketing Committee continues to burnish Graycliff's reputation nationally, and is capably led by *William Wisniewski*. Last but certainly not least, *Diane Chrisman*, our fearless President, serves on every committee, and works tirelessly on Graycliff's behalf. For her, it is a full time job.

Members of the Conservancy are also vital to Graycliff's progress...and to restoration of the entire estate. We are proud to report that all exterior restoration of Graycliff's three Wright-designed buildings is now complete, including the roofs, the massive stone chimneys, and the famous cantilevered balconies (all six of them!) the exterior stucco, and the scores of windows, including our signature "Diamond Window." As a result, this promises to be the most spectacular spring, summer and fall to visit Graycliff in over ten years.

This past year, Conservancy membership rolls doubled, as visitors and friends joined in the remarkable success. We hope that you will continue to help us move forward, or if you are not yet a volunteer or a member, will consider joining us on this exciting journey.

—Reine Hauser
Executive Director

*This past year,
Conservancy membership
rolls doubled,
as visitors and friends
joined in the
remarkable success.*



PHOTO: R. HAUSER



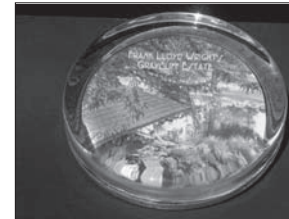
PHOTO: R. HAUSER



Visit the Pavilion Gift Shop



"Diamond Window" Settings



New – The Graycliff Paperweight

The Pavilion Shop at Graycliff: New This Season

New Books: *The Women* by noted author T.C. Boyle – A new novel – evocative and gripping account of Wright's life. *A must read.* *Frank Lloyd Wright: A Life* by Ada Louise Huxtable – Renowned architecture critic explores how Wright changed architecture forever. *Up Close: Frank Lloyd Wright* by Jan Adkins – A riveting biography of Wright, and his impact on architecture. *For young readers.*

For the Home: Teco Pottery vases, Hagar Pottery vases, and Door Pottery vases, Throws and pillows with Wright designs. Pretty Useful Tools inspired by William Morris. Table runners and mats in just the Wright design. Plus umbrellas, door mats, stained glass, ornaments, notecards, stationary—and much more!

Apparel: T-Shirts & sweatshirts in mens' and ladies' cuts, caps and hats.

Jewelry: Wide selection of Wright-inspired jewelry – earrings, bracelets, necklaces, cufflinks, business card holders and key chains.

GRAYCLIFF EXCLUSIVES:

Baseball Caps and Sailor's Caps – in cotton twill, subtly embroidered with the Graycliff logo. Great on land or sea, or for fishermen, hikers, and gardeners among us! Sweatshirts and tees available, too!

Graycliff Earrings – Designed exclusively for Graycliff by Sarah Neundorfer, these earrings depict our signature Diamond Window in wood or in clear acrylic. Light enough to be comfortable, unusual enough to inspire envy – you may buy them as a gift only to find yourself putting them on!

Graycliff China – Created by Buffalo China exclusively for Graycliff. Dinner plate, luncheon plate, salad/cereal bowl and mug in our own distinctive pattern. Available by the piece or place setting. A great gift for a newlywed, or a wonderful addition to your table.

Graycliff Panoramic Photograph – By master photographer *Carl Schmitter*, framed and/or matted – enjoy Graycliff year-round.

Graycliff Bird's Eye View Drawing – With this framed and/or matted print created exclusively for Graycliff by artist *Scott Wood*, you can enjoy memories of Graycliff from your own home.

And Introducing... The Graycliff Paperweight – newly created especially for Graycliff! Beautifully boxed, our new Graycliff Paperweight makes a wonderful gift, or will inspire pastoral memories on your own desk.



Your membership is an investment in Graycliff – help us keep up the momentum!
Members are vital to restoring and preserving Frank Lloyd Wright's Graycliff Estate.

Members enjoy free admission for Graycliff tours, a 10% discount on gift shop purchases, a free subscription to our twice annual newsletter and advance notice and/or free admission to special events. Best of all, you are engaging in an active role in saving a masterpiece of Frank Lloyd Wright.

Please check your preferred Membership Level below ▼

Amount enclosed \$ _____

CHECK ENCLOSED
 VISA MasterCard

CARD # _____

EXP. DATE _____

SIGNATURE _____

Membership is tax deductible to the extent provided by law.

BASIC MEMBERSHIP

INDIVIDUAL — \$35

Benefits:
• Free standard tours
• 10% discount at Gift Shop
• Subscription to the Graycliff Conservancy newsletter
• Discounts on educational programs and lectures

FAMILY — \$60

• All the above, plus free standard tours (for four)

BENEFACTOR — \$100

• All the above, plus free admission for an in-depth Architectural Tour

Please make your membership payable to:

Graycliff Conservancy • 6472 Old Lake Shore Rd., PO Box 823, Derby, NY 14047

NAME _____

ADDRESS _____

CITY _____ STATE _____ ZIP _____

PHONE _____ E-MAIL _____

Please list my/our name as follows in any donor listing: _____

If you are interested in more information about other gift opportunities at Graycliff, please call 716-947-9217 and ask to speak to the Executive Director.

GRAYCLIFF'S "WRIGHT CIRCLE" OF LEADERSHIP

The Wright Circle is a dedicated group of individuals whose generous contributions are essential to restoring and sustaining this historic landmark. In recognition of your support, you will be invited to any special receptions and events that are held during the year for Wright Circle members.

GOLD — \$250

• All basic membership benefits, plus...
• Invitation to Wright Circle receptions and events
• Complimentary gift membership (any basic membership category)
• Two free admissions for special architectural tours, lectures or educational programs

PLATINUM — \$500

All of the above, plus...
• Four free admissions for special architectural tours, lectures or educational programs

JEWEL — \$1,000

• All of the above, plus...
• A private architectural tour for six (by reservation) with the Executive Director and/or Board President