

GRAYCLIFF
CONSERVANCY, INC.

WRIGHT ON THE LAKE

ESTABLISHED TO PRESERVE FRANK LLOYD WRIGHT'S GRAYCLIFF ESTATE



Graycliff Estate Readies for Banner Tourist Season

A Destination Location for Wright Architecture & Blooming Gardens



P. Mahoney

Saperston Companies
and M&T Bank
Set Pace with
Financial Support

Page 5



Conservancy Selected
for Two Initiatives

Page 4



Martin Family
Pictures from the
Archives

**GRAYCLIFF GALA
FUNDRAISER**

June 25th

Larkin at Exchange

Graycliff Rises to Meet Ongoing Economic Challenges

It was with great pleasure and an ongoing honor to accept the position of President of Graycliff Conservancy last fall. Our outgoing President, *Diane Chrisman*, has served not only as President but mentor to the Board of Directors during her term over the past five years. She has done so in a way that has made it a pleasure to serve the Conservancy and encourage continued participation.

With the honor of this position also comes a large responsibility to continue the sound administration of the organization practiced since its inception. 2009 was a great year for Graycliff in a number of ways, but it has also focused an extreme challenge to maintain the Conservancy's financial health in the face of turmoil in many of the individuals and foundations that support the organization. Last year had many outstanding highlights: Attendance has continued to rise in contrast to national trends that have forced other house museums to close. With the current rate of attendance gains, Graycliff has the possibility of attaining financial independence from foundation grants in the next several seasons. Graycliff has been featured in several prominent international publications that have spotlighted the importance and range of Wright's designs for the property to individuals and scholars alike. The continued recognition of the property has been a major factor in the attempt to maintain financial security. Our docents have continued to lead highly successful tours and grown the membership base through the careful coaching of training chair *Scott Schultz*. Our Education Committee has fostered a traveling speakers bureau known as "Wright on the Road". Education Committee chair *Diane Schrenk* led the effort to prepare for the national conference of the Frank Lloyd Wright Building Conservancy last fall. Many Conservancy members recalled the property from their 1997 conference and were stunned at the transformation due to the restoration completed to date. The conference was a tremendous success for Graycliff with hundreds of conference attendees talking about the transformation long after they returned to their home cities.

Landscape restoration has largely met its funding match for a significant grant from the State of New York and will begin design work in the near future.

Continued on page 6



From The Lake Side: A Message From The Executive Director

There's always something wonderful afoot with Graycliff. During these last few months, the Conservancy has received additional matching funds for our previously announced grant from New York State toward the restoration of Graycliff's historic landscape (see articles pg. 5). Tours over the Thanksgiving weekend, and in fact, for all of 2009, broke visitation records for the fifth straight year. Restoration continues to progress in the Foster House, and plans continue to move forward with landscape restoration as well.

In the Pavilion Gift shop, a selection of appealing items inspired our visitors...aided by a new team of volunteers who decorate the gift shop for holidays and create tempting displays. At Graycliff, volunteerism remains central to our success, and volunteers are actively involved with every aspect of Graycliff: progress from the stellar *Green Team* that maintains our grounds and gardens; the enthusiastic *Housekeeping Team* that similarly maintains our historic buildings; to the wonderful volunteers that are vital to visitor services and administrative tasks in the Pavilion; to our fantastic volunteer *Docents* who delight visitors from across the country and around the world; and volunteers who do all the tasks, large and small, that makes Graycliff such a special place. On Saturday, November 14th, several of our most dedicated volunteers were lauded for their service at the Graycliff Annual Volunteer Appreciation Dinner.

Over the last several months, we have seen a change in leadership at Graycliff, with *Diane Chrisman* stepping down as President after five years. Her commitment, hard work and immense knowledge of nonprofit management as President will be greatly missed;

fortunately, *Chrisman* has agreed to stay very actively involved, and will continue her service to Graycliff in a new capacity as Board Secretary. *Patrick J. Mahoney*, A.I.A., former Vice President of the Conservancy has now moved up to President, and as a Founding Board member, his knowledge of Graycliff is both broad and deep. A true expert in the architecture of Frank Lloyd Wright, Mahoney will continue to be an inspiration to us all. Other changes include the addition of Board member *Russell Maxwell* now joining *Stanton Hudson* as Vice President, and *Chuck Wilson* continuing as Treasurer. Graycliff is very fortunate indeed to have such stellar individuals with a wide array of skills and abilities to lead the organization into the future.

This past winter, *Senator William Stachowski* visited Graycliff for a special tour; and several more visits from elected officials, community representatives and other VIPs are planned for warmer weather.

During these challenging economic times, membership and Graycliff's Annual Fund campaigns take on even greater importance than usual. We are delighted to report that our most recent Annual Fund campaign exceeded that of the preceding year, despite these recessionary times. We are deeply grateful for every year-end gift we received, and are thankful to all our continuing members. It is in large part because of your sustaining help that Graycliff has flourished – in all ways – preservation, restoration and visitation. Your belief in and tangible support for Graycliff are an inspiration to us all.

—*Reine Hauser*

“It is in large part because of your sustaining help that Graycliff has flourished – in all ways – preservation, restoration and visitation.”



A SPECIAL NOTE OF THANKS

THE GRAYCLIFF CONSERVANCY APPRECIATES THE GENEROUS SUPPORT OF THE DEPARTMENT OF THE INTERIOR, NATIONAL PARK SERVICE-SAVE AMERICA'S TREASURES PROGRAM, THE NEW YORK STATE ENVIRONMENTAL PROTECTION FUND, NEW YORK STATE STRATEGIC INVESTMENT PROGRAM AND THE NEW YORK STATE CLEAN WATER/CLEAN AIR BOND ACT, THE COUNTY OF ERIE, AND TOWN OF EVANS AS WELL AS SIGNIFICANT FUNDING FROM THE BAIRD FOUNDATION, EAST HILL FOUNDATION, FIRST NIAGARA BANK FOUNDATION, GANNETT FOUNDATION, HODGSON RUSS ATTORNEYS LLP, SEYMOUR H. KNOX FOUNDATION, SAMUEL H. KRESS FOUNDATION, JAMES H. CUMMINGS FOUNDATION, THE MARY K. MAHLEY FAMILY FOUNDATION, M&T BANK, THE JOHN R. OISHEI FOUNDATION, PHYLLIS W. PIERCE CHARITABLE LEAD ANNUITY TRUST, COMMUNITY FOUNDATION FOR GREATER BUFFALO, THE MARGARET L. WENDT FOUNDATION, DOROTHY PAYNE FUND, UNITED STATES DEPARTMENT OF TRANSPORTATION THE PAUL J. KOESSLER FOUNDATION AND COMMUNITY FOUNDATION OF GREATER BUFFALO.

THANK YOU



P. Mahoney

Graycliff Conservancy: Leadership in Transition

“Confident that the future of Graycliff looks bright, though not without the challenges that many non-profit organizations face.”

Governed by an active and committed Board of Directors, the Graycliff Conservancy places great value on inspiring enthusiasm among its members, seeking fresh ideas and embracing change, all of which contribute to the long-term viability of an organization. Further, Directors understand the importance of succession planning and providing opportunities for enhancing leadership skills. Now, as the Board transitions to new leadership, Directors are confident that the future of Graycliff looks bright, though not without the challenges that many non-profit organizations face.

When I followed *Carol Bronnenkant* in the role of president of Graycliff, I did so with considerable trepidation. Carol is the epitome of visionary leadership and had brought the organization so far during the few short years of its existence. I, on the other hand, was new to historic preservation and heritage tourism. But with Carol's guidance, the encouragement of Board members and the skills of Executive Director *Reine Hauser*, also new to the organization at that time, I became involved in what has been one of the most rewarding experiences of my life.

During the six years of my presidency, I had the pleasure of working with extraordinarily capable and dedicated Directors and staff, and was awed by the commitment of Graycliff's docents and other volunteers. Together we advanced restoration, completing the exteriors of all three structures on the estate, secured funding from governmental and foundation sources and enhanced the reputation of Graycliff both in the Western

New York community and across the nation. From a governance point of view, revised by-laws codified our commitment to term limits for Directors and included other best practices. Graycliff's committee structure was strengthened and broadened with the addition of non Board members who extended the breath of our skills and depth of knowledge. Our membership increased thanks especially to our docents, and our visitation grew significantly.

Currently, Graycliff is working on a number of key strategic directions. Most important is completing the restoration of the buildings and grounds, and maximizing earned and contributed income, always a concern for non-profit organizations during tough economic times. We are engaged in identifying opportunities for capacity building that will ensure sustainability. Strengthening our relationships with other regional sites is important in our effort to promote Buffalo Niagara as a heritage destination.

Another key strategic direction is to support Board development, transition and succession. This last is accomplished as *Patrick Mahoney*, vice president for many years, succeeds me as president of Graycliff. Pat will be a great president. He is exceptionally knowledgeable about Frank Lloyd Wright and Wright's work both locally and throughout the world. Board members agree that Pat has true passion for Graycliff and will be the ideal steward during the final stages of restoration and a superb leader to guide us through the opportunities and challenges ahead.

—*Diane Chrisman*

GRAYCLIFF CONSERVANCY, INC.

WRIGHT ON THE LAKE

BOARD OF DIRECTORS

Patrick J. Mahoney, A.I.A.
President

Russell Maxwell
Vice President

Stanton H. Hudson, Jr.
Vice President

Diane Chrisman
Recording Secretary

Charles Wilson
Treasurer

Gregory Bernas
Joseph A. Blatz
Sandra L. Brant

Thomas J. Carleton, P.L.S.
Charles A. LeFevre, ASA

Harvey Garrett
Barbara Harder
Jessica Hearst

Richard E. Minekime
Steve Musso

Sharon Osgood, Esq.
Lester Rickard
Diane Schrenk

Catherine F. Schweitzer
Barbara A. Seals Nevergold, Ph.D.

Clifford E. Whitman
William A. Wisniewski

HONORARY BOARD MEMBERS

The Rev. Margaret R. Foster
Darwin Martin Foster

ADVISORS

Jason Aronoff
Carol A. Bronnenkant

John H. Conlin
Jack Quinan
Douglas Swift

EXECUTIVE DIRECTOR

Reine Hauser

BURNISHING THE JEWEL

Your Financial Support is Vital!

**Funding—already secured—
must be matched
with private contributions**
for Graycliff's restoration
to continue apace.

Crucial Projects in need of Immediate Funding:

Restoring the Interior of the
Isabelle R. Martin House

Procuring Interior Furnishings

Strengthening On-Site Operations

**Please contribute—all donations
are tax-deductible**

**For information:
716-947-9217**



Senator William Stachowski attending the Graycliff Benefit at the Davidson House

Make Graycliff Part of Your Legacy

Our gifts can last beyond our lifetimes. Gifts made through estate planning will allow the Graycliff Conservancy to preserve and restore the Graycliff Estate through the years to come. Your contribution will provide an enduring legacy and will ensure Graycliff's continued success. Please help assure our future by making your estate plans today.

Anyone can leave a legacy. Meaningful donations can come from anyone, not just the very wealthy, and in any size. So all of us, regardless of our means, should consider including charitable requests when we draw up a will.

Some people specify a certain dollar amount to leave to a charity, and others leave a percentage of their estate or a specific asset. In addition to leaving money, you can leave such things as personal property, real estate, life insurance, retirement funds, stocks, bonds or part (or all) of all of your IRA.

It is important to remember that there is no such thing as an insignificant gift. Anyone can arrange to leave a gift—no matter how large or small.

The decision to tell us that that you have included Graycliff Conservancy, Inc. in your will is up to you. But we'd like to know, so that we can express our appreciation to you during your lifetime. We invite you to consider naming Graycliff Conservancy in your will or designate the Conservancy as a beneficiary in another way. Please call (716) 947-9217 for further details.

A Winter Tour for Senator William Stachowski

In late January, *New York State Senator William Stachowski* visited Graycliff for a tour. Led by Graycliff Board President *Patrick J. Mahoney, A.I.A.* and Executive Director *Reine Hauser*, the Senator enjoyed a behind-the-scenes tour that included areas of the Foster House under restoration, as well as a sneak preview of Graycliff's state-of-the-art fire suppression system, that is now partially installed. A winter tour allowed Stachowski a rare unobstructed view of the three Wright-designed Graycliff buildings, which during spring, summer and autumn are nestled amidst green leaves and verdant foliage. We look forward to working closely with Senator Stachowski, as well as his colleague *Senator Antoine Thompson*, in the coming months and years ahead.

Graycliff selected for Two Initiatives Fund for the Arts and the Harvard-Flickinger Governance Project

The Graycliff Conservancy has been selected to participate in two prestigious community initiatives designed to build capacity for mid-sized organizations.

The *Fund for the Arts*, a partnership of eight foundations in Western New York, has selected Graycliff and nine other organizations to participate in a pilot program underwritten with support from the national Kresge Foundation.

The aim of the Fund for the Arts is "*to strengthen... internal governance, administrative and development activities ...*" said *Clotilde Perez-Bode Dedecker*, President/CEO of the *Community Foundation for Greater Buffalo*, one of the participating WNY Foundations. Graycliff, like the other organizations, has been matched with an expert consultant to help identify, prioritize and realize opportunities for growth. The program will aim to achieve measurable improvements in each organization's governance or operations.

"*Our goal for organizations participating in this pilot program is... to develop strategies for growth that will better position them to attract local, state and national grant support*" said *Robert Gioia*, President/CEO of *The John R. Oishei Foundation*. *Nancy David*, of the *David Family Foundation* noted that "*Research has shown that our region's arts organizations want and need help ... so that they can increase the strength of their organization and its contributions to our community.*" *Catherine Schweitzer*, Executive Director of the *Baird Foundation* amplified this thought, that "*Through the FFA we will enable [Graycliff] to capitalize on these opportunities and take [this] organization to the next level.*"

"*[Graycliff] does not have the same access to resources as the larger anchor institutions.*" noted *Janet Day*, Trustee, *The Margaret L. Wendt Foundation*. *Nancy Brock* of the *M&T Foundation*, a long-time Graycliff supporter, added that during these challenging times, "*The economic downturn has had a significant impact on Western New York's cultural institutions—with this pilot program we will invest in strengthening their internal capacity so that they are more sustainable, [and] better able to seize opportunities....*"

Like *Beth Gosch*, Executive Director of the *Western New York Foundation*, Graycliff is also pleased that this "*collaborative funding approach has been recognized nationally*" and like Ms. Gosch, we hope that it will "*improve our region as a center for arts and culture.*"

The second initiative, the *Harvard-Flickinger Governance Project*, is a project of the *Community Foundation of Greater Buffalo*, together with the *Harvard Business School Club of Buffalo*. Modeled after the case study method that has been used by the Harvard Business School for over seventy years, the Harvard-Flickinger Governance Project allows area non-profits to focus on issues and goals of good governance in a series of evening sessions conducted in WNY, eliminating the need to travel. Graycliff Board members *Patrick J. Mahoney, A.I.A.*, *Diane Chrisman*, *Harvey Garrett*, *Richard Minekime*, *Sharon Osgood, Esq.*, and Executive Director *Reine Hauser* will join Board members and Executive Directors from six other organizations in several rigorous sessions.

The Graycliff Conservancy is honored to have been selected to participate in both the Harvard-Flickinger Governance Project and The Fund for the Arts initiatives. During the last few years, the Graycliff Conservancy has blossomed into a flourishing organization with many accomplishments to its credit. Selection for participation in these programs is recognition of the Conservancy's commitment to employing the best practices of non-profit management. They will advance the Conservancy's desire for good governance, which in turn will ensure that Graycliff's sterling reputation continues to shine brightly.

Major Gift from Saperston Companies in honor of Catherine Schweitzer



A few years back, Graycliff Board member *Catherine Schweitzer* introduced *Willard Saperston*, President of the *Saperston Companies* to Graycliff. Saperston had long been impressed with Schweitzer's commitment to the betterment of the Western New York Community, and to Graycliff in particular. This first visit inspired a series of annual gifts in support of the work of the Graycliff Conservancy.


But that was just the beginning. Recently, following a visit to see the progress of restoration at Graycliff, the Saperston Companies followed up with a major gift of \$24,000, also in honor of Schweitzer, in support of the Conservancy's efforts to restore our historic landscape.

As Willard Saperston said, "*We have to give people on the national level a taste of Western New York...and Graycliff, as a national treasure, is just the way to do it.*" Like Schweitzer herself, the Saperston Companies are deeply committed to the area, and enthusiastic about the increase of tourism in our region, focusing on historic architecture. The Saperston Companies have deep roots in the community, and provide commercial and residential real estate services, investment services, insurance and management/accounting services in Western New York.

Although Saperston jokingly credits the oatmeal raisin cookies he enjoyed during his visit as the deciding factor for this most recent gift, it is in fact his appreciation of Catherine Schweitzer's efforts on behalf of Graycliff, and his own admiration for the Conservancy that inspired his generosity.

We are very grateful for the continuing support of the Saperston Companies toward the restoration of Graycliff's historic landscape, and which will be matched dollar-for-dollar with previously announced funding from New York State.

Major Gift from M&T Charitable Foundation to support Historic Landscape Restoration

A major gift to the Graycliff Conservancy of \$20,000 has been generously provided by the *M&T Charitable Foundation*  **M&T Bank** in support of Graycliff's historic landscape restoration. This major gift will be matched dollar-for-dollar by New York State funding, thus doubling its value in real terms.

Nancy Brock, Vice President of The M&T Charitable Foundation says "*Graycliff well deserves its place as a premier site in our FLW treasure chest and together with other world class preservation sites, presents a unique opportunity to generate an architectural tourism economy in our region.*"

The M&T Charitable Foundation has been a long-time supporter of Graycliff, having previously contributed toward the installation of handicapped accessible walkways throughout the estate, the Visitor Pavilion, and very important general operating support on an annual basis. M&T Bank is well known for its far-sighted commitment to Western New York, and Graycliff has been a beneficiary of their prescience and generosity for several years. We are very grateful for the M&T Charitable Foundation's support of this restoration project, as well as their on-going support of and enthusiasm for the other Graycliff initiatives.



Our Neighbor's Lovely Flower Bed

Neighbor Provides First Landscape Funding

When Graycliff received the good news about New York State funding for the restoration of our historic landscape, it could have been daunting to raise the matching funds required for the grant.

Instead, it was one of our own long-time neighbors who first enthusiastically offered support and encouragement. The significant contribution comes from a long-time Derby resident with a keen interest in gardening. This generous gift of over \$60,000 set us smartly on track to reach our goal.

An expert gardener herself, the donor (who prefers to remain anonymous) is very enthusiastic about Graycliff's extensive plans for historic landscape restoration. As someone who has lived nearby for over seventy years, she plans to enjoy watching the restoration process as it unfolds. With her deep commitment to, and interest in, historic preservation and the good of the community, we are equally delighted to share our progress with her. *A heartfelt thank you to one of our nearest and dearest!*

Archive of Graycliff / Martin Collection Photographs Now Online ubdigit.buffalo.edu

Few people realize one of the most substantial archives of letters; plans and photographs related to the work of Frank Lloyd Wright are housed on the *State University of New York at Buffalo's Amherst Campus*. The Archives, located on the fourth floor of Capen Hall, have digitized large portions of their collections. The same photographs used to determine restoration conditions by scholars, and shown in this newsletter are now accessible to you online at ubdigit.buffalo.edu. Photographs are organized under the Darwin D. Martin Collection and subdivided by series as relating to Graycliff, The Darwin D. Martin House, and the Martin Family.

Graycliff Sets Goals *Continued from page 1*

However, with all the fantastic accomplishments of the past year, the country's financial malaise overshadowed the Conservancy. A significant portion of Graycliff's funding comes through charitable foundations. Those same foundations have been severely affected by losses in the stock market over the past two years. As a result, many of the annual contributions normally made have been deferred or eliminated due to lack of resources. Graycliff has planned for such a crisis, which has allowed the Conservancy to continue operating even in the face of declining foundation support. Many foundations have evaluated their own financial health and will resume funding organizations like Graycliff this year, but many will not confirm this till late in the year. In an effort to restore the cash reserves that allowed us to weather last year's crisis we have developed a strategy aimed to insure the organization's health.

Like many organizations we have reviewed our expenses and streamlined them where possible. Graycliff has always been a lean organization, but even such an operation can get better. A careful review of the finances has shown that some expenses such as marketing are a major part of our budget, but very effective. Tracking the evolution of the Conservancy, it can be noted that as marketing has increased every dollar invested has reaped several in return. The logical response is that marketing was not an area to trim, as it would only hurt the bottom line.

Membership continues to be one of the most important supporting parts of the organization. As membership has continually increased, we look for ways to encourage and honor the members for helping restore and operate the property.

Members have proven themselves to deeply care about the future of Graycliff and have generously participated in additional fundraising requests that have been required to keep the organization afloat. The commitment shown by members in introducing their friends to the property has made a tremendous difference historically, as a referral from you exceeds any advertising we can purchase. Please bring your friends on a tour this season.

Fundraising has been a core responsibility to insure the financial health of the organization and to create opportunities for supporters to enjoy stunning special events. Offsite fundraisers like the Larkin Expo and the Davidson House benefit have not only generated important funding for the organization, but also created, fabulous events with special access to dramatic offsite settings. Onsite events such as last years summer concert let attendees enjoy the property in a different light than a standard tour. *Jessica Hearst* has led the Development Committee in planning these wonderful events. This year will have its share of similar events as well as one designed to become one of the most memorable events of the season. June has been slated for a fun Friday evening event at the Larkin at Exchange Building. The event will feature fine wines and food, exhibits and a live auction with items such as an overnight stay for four at the Wright designed Walter Davidson House (1908), a cocktail party for twelve at Graycliff, and a private wine & cheese party with a tour of Buffalo's rowing Boathouse designed by Frank Lloyd Wright. A 1930's era themed event is scheduled for the evening of Friday, June 25th at the Larkin at Exchange Building so mark your calendars. The Larkin Building is at the heart of Buffalo's urban renaissance, an area with ample parking and exciting development, taking shape very quickly. The Larkin fundraiser is expected to provide significant funding to help Graycliff continue to operate.

Serving as Graycliff's President is an enormous honor, although it won't be easy. My goal, with your help, is to continue to position Graycliff for a solid future that benefits all that experience the property with exceptional ranges of widespread activities!

Hope to see you on an Architectural Master tour or at a Graycliff event this season.

Pat Mahoney

President, Graycliff Conservancy Inc.

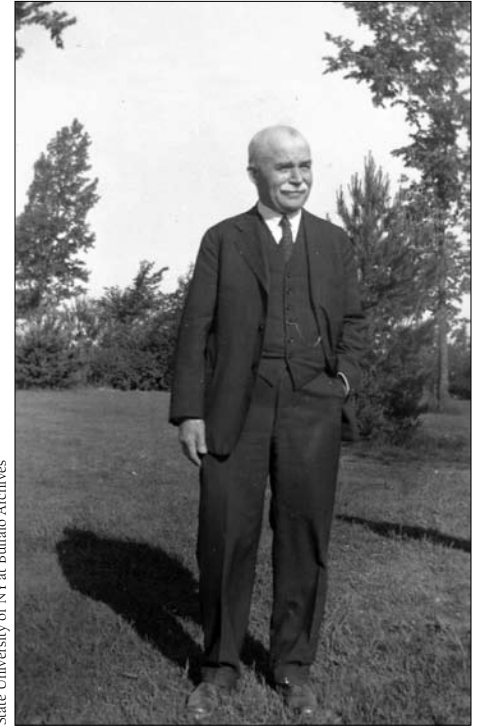
Frank Lloyd Wright Quarterly features Graycliff

The 2009 Autumn Issue of the *Frank Lloyd Wright Quarterly*, a full color magazine published by the Frank Lloyd Wright Foundation, is devoted to Graycliff. Architectural historian and author Kathryn Smith's essay, "The Earth, Air, Light, Water: Graycliff" and "Graycliff Emerging" by Patrick Mahoney, AIA are graced by numerous historic and contemporary color photographs.

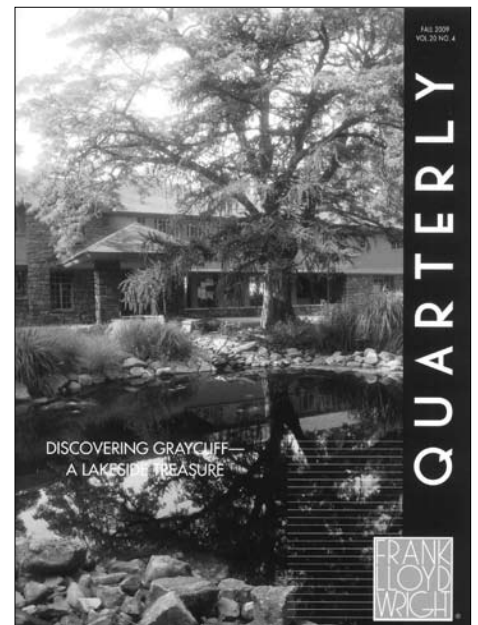
This issue of the Quarterly, ably edited by Suzette Lucas, is 39 pages long, and features approximately fifty entrancing photographs, plans, sketches and other visual representations. Copies are now available at the Graycliff Pavilion Gift Shop for \$6.



Graycliff is featured in the new comprehensive publication released documenting Frank Lloyd Wright's career



Darwin D. Martin circa 1932 at Graycliff in the area now referred to as the "Member's Lawn"



The full color Frank Lloyd Wright Quarterly dedicated to Graycliff is available in the gift shop.



View of Graycliff circa 1928, shows chauffeur house as originally constructed from the South. Note the hand pump for drinking water near the first floor window of the chauffeur residence.

Graycliff featured in Major Publication – *Frank Lloyd Wright, Complete Works, Vol. 2, 1917-1942* *Graycliff's entry in this book demonstrates the the architectural community now recognizes why Frank Lloyd Wright revered Graycliff*

Taschen, a publisher of books on visual culture, has recently released its second volume of a three part collected works series on Frank Lloyd Wright. The series is intended to feature an entry on every design project Wright accepted during his long career. Volume II features work from 1917-1942, including a full color two-page spread on Graycliff. The large portfolio weighs in at a whopping 13 pounds with 488 pages and shows many previously unpublished projects. The long awaited publication is the most complete ever produced on Wright's work and the most substantial since a 12-volume monograph was published in the 1980's. The director of the Frank Lloyd Wright Archives in Scottsdale, Arizona, Bruce Brooks Pfeiffer, authored the book. The series has been produced in collaboration with veteran editor, Peter Gossel.

Of particular note relating to Graycliff is a photo showing the estate prior to the 1929 expansion of the chauffeur's residence. This rare photograph confirms that the initial site design constructed at Graycliff was done with a split driveway adjacent to the entry circle and meant to serve a Wright designed guesthouse that was never constructed. One section of this drive was removed when Wright enlarged the chauffeur's house (today referred to as the Foster house) in the early part of 1929. The continued evolution in Wright's planning of the property serves as a never-ending source of speculation of Wright's intentions for the project.

An unusual 1923 home designed for Darwin D. Martin's daughter Dorothy for St. Catherine's Court in Buffalo is also represented in the book. The steeply gabled roof structure was to have featured Tudor inspired elements but was not constructed in favor of a more conventional design by a local architect.

Graycliff's entry in this book marks the its most substantial coverage in a major work since the early 1940's and demonstrates that the architectural community now recognizes why Frank Lloyd Wright revered Graycliff.

—Patrick J. Mahoney, AIA



View of the chauffeur residence showing the 1927 position of the partially open folding doors facing the circle. These doors were relocated when Wright enlarged the chauffeur's residence during 1929.



Circa 1927 view of the porte cochere and chauffeur residence in the background.

Graycliff initiates ‘Members’ Lawn’ in appreciation of Sustaining Memberships.

Members have been the core supporters and the very reason Graycliff survived when development threatened it in 1996. Without the core group of members whose donations helped attract the foundations that have financed much of the restoration, the complex would have almost certainly been demolished like many other historic properties on the lakeshore. Membership continues to be one of the sustaining forces that have allowed Graycliff to weather recent economic hard times. With that in mind a new benefit has been instituted to thank members at the family level and above and also to give them greater access to the property.

The West Lawn at the Cliffside has been designated the ‘Members’ Lawn’ and will be available for reflection, conversation with other members or just pure relaxation on a number of designated days throughout the season. Members at or above the Family Level can call the site at 947-9217 to register for one or more of the dates below and enjoy the lakeside views. The thought is that many members may enjoy this kind of access, which does not require them to take a tour in order to spend some time by the lakeside. If a member would like to go in the historic buildings they are asked to register with a tour group.

The Martins truly enjoyed relaxing near the cliff’s edge and this is an opportunity for you to as well. The Members’ Lawn will be open in 2010 on Sunday, May 16 • Saturday, June 12 • Sunday, July 18th • Sunday, Aug. 15 • Saturday, Sept. 11 • Saturday, Oct. 23. The lawn will be open from 11am to 3 pm each of these days. Please accept this as a continuing thank you of your commitment to Graycliff.

Wright Exhibit Wins Blue Ribbon at 2010 Buffalo Postcard Show

Display held over until Martin Landscape Exhibit scheduled to open

The exhibit currently in the Visitor’s Pavilion, ‘Frank Lloyd Wright, Built Works in Historic Postcards’ is set to be replaced by a new exhibit entitled ‘Landscape Influences on the Martin Family’ in July of this year.

Recently part of the postcard exhibit traveled to the annual Buffalo Postcard Show and brought back a blue ribbon for first place in Topographical Exhibits. The postcard exhibit is now fully back at the visitors pavilion, with its blue ribbon.

The new exhibit traces influences on the Martin family relating to landscapes and features selections from an album compiled by Darwin D. Martin prior to the design and construction of Graycliff. Art Dealer Scott Elliott donated the album to the Conservancy in the year 2000 along with other valuable archival materials. The album contains accounts of the trip taken by Darwin D., Darwin R., and Dorothy R. Martin to the West coast in the summer of 1915. As the trip proceeded copies of the accounts were sent to a number of close friends of the Martins around the country as well as Isabelle Martin, who remained in Buffalo. It is clear to realize the Martin’s keen interest in scenic beauty from the photography and written accounts contained within the album.

As part of the trip a visit was made to the camp of noted vaudeville performer Charles Kellogg, a bird imitator who became a renowned naturalist. Kellogg championed what would become Yosemite National Park and traveled in the remnants of a huge redwood log (the Travel Log). A section of the redwood was hollowed out into the first form of American motor home. Kellogg’s later more conventional motor home made a trip to Graycliff in the early 1930’s.

The album also documents a journey made into the future Yosemite National Park. Members of the party included Kellogg and A.C. Pillsbury. Pillsbury was the inventor of the first time-lapse motion picture camera, and was one of the most prominent photographers of Yosemite.

The exhibit is intended to reveal landscapes the Martins treasured and helped form their notion of the natural beauty that is Graycliff. This marks the first time that excerpts from the Scott Elliott donated 1915 album have been on public view.

—Patrick J. Mahoney, AIA



State University of NY at Buffalo Archives

Darwin D. and Isabelle R. Martin with Darwin and Margaret Foster enjoying the area now called the ‘Member’s Lawn’



State University of NY at Buffalo Archives

The family enjoying the view of the lake from the esplanades stone seat. The seat was jack-hammered off the cliff in the early 1980’s.



P. Mahoney Collection

A 1950’s card of Graycliff lakeside, published by the Piarist Fathers, showing the chimney prior to stone restoration



State University of NY at Buffalo Archives

Martin family friend and vaudeville performer, Charles Kellogg with Margaret Foster at Graycliff. Kellogg drove his second motor home cross country from California.

The Docent Team: Part of the Graycliff Family

Late summer, I had some paper documents that I needed to send out to docents and wished I had them available electronically so I could send them via email. Not owning a scanner, I was stuck. While discussing this with my brother one afternoon, he said I should just come over to his office and he would be glad to scan these for me.

Then in the fall, my Mother sold the house that I grew up in, after having lived there for 42 years. As we sifted through the house full of belongings, deciding what should stay and what should go, I realized that some items in the “to go” pile could be of use to Graycliff and asked if I could have them for us. This started a whole series of phone calls and conversations regarding whether she should just throw something out or if I thought Graycliff could use it.

As I was completing my first year Co-Chairing our docent training, I was suddenly struck by how my entire family has gotten involved with Graycliff without my even realizing it. I suddenly understood that a variety of relationships between family and Graycliff, both in the past and continuing into the present, are what drive Graycliff.

I thought of that one special family who created Graycliff, the Martin family. Their family’s need for a summer estate near Buffalo is, of course, what led to Graycliff’s design and building. Once completed, not only parents, children and grandchildren, but also those who worked for the Martins, made Graycliff a place for this extended family to gather and enjoy the beauty of nature. To this day, members of that extended family continue their involvement in Graycliff by visiting, enjoying reunions, sharing memories and making generous donations of Graycliff artifacts to the Conservancy.

I also thought of the docents who have become involved with Graycliff over the years because a member of their family has chosen to participate. In fact, just about every team at Graycliff has at least one member who now volunteers their time because a family member has become involved with Graycliff. The *Guerin, Mitchell, O’Brien* and *Wahlenmeyer* families are only some examples of multiple family members having participated in our docent program over the years.

I now realize that the docent team at Graycliff is a family as well. As with every family, we both gain new members as well as lose people who mean so much to us through the passage of time. We are truly blessed that our docent family grew by four members last year. These docents successfully completed their rigorous docent training sessions and certification last year and are now actively giving tours. I eagerly await meeting and shepherding our 2010 docent class through training and having them become the newest members of our family.

I am also consistently impressed by how our existing docents welcome new individuals into our family and selflessly offer their guidance and suggestions to our docent candidates. By volunteering their time to assist with training, allowing these new family members to shadow their tours and by giving their personal advice, they have enriched our new docents in ways which only a true family is capable.

Over the past year I have realized the power, strength and importance of the Graycliff docent family. I realize that families are needed because it is virtually impossible for a single individual to realize a dream, much less one as complex as we attempt to execute at Graycliff. As with all families, sometimes we don’t always see things the same way, but hopefully we learn from each other and grow, becoming better people and a better family because of our association with each other.

I thank all of my docent family for constantly checking the facts, asking questions, supplying your feedback and continually expanding our collective knowledge. I also thank you for giving your time, energy and enthusiasm to Graycliff. But most importantly I thank you all for helping me to grow as a docent, but even more so as a person. Thank you for allowing me to be part of your family!

—Scott Schultz

Co-Chair, Docent Training
Graycliff Conservancy

“I am also consistently impressed by how our existing docents welcome new individuals into our family and selflessly offer their guidance and suggestions to our docent candidates.”



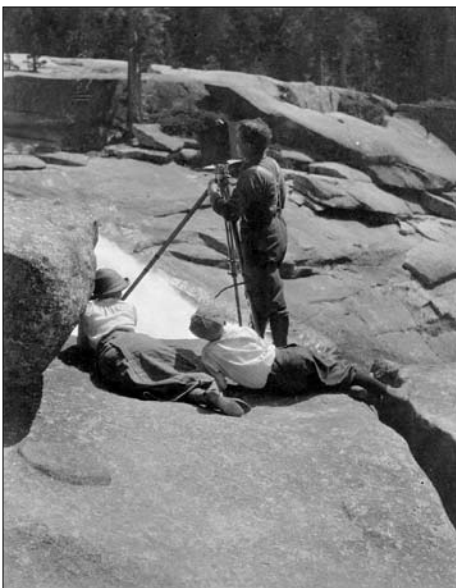
P. Mahoney



P. Mahoney



Darwin D. Martin’s traveling party in the summer of 1915 at Yosemite. Photo taken by Darwin D. Martin



A 1915 photograph taken by Darwin D. Martin in Yosemite of the famous landscape photographer A.C. Pillsbury at work

Graycliff's Green Team: 3 Major Projects Completed

Frank Lloyd Wright envisioned Graycliff as a combination of building and landscape, with the gardens and house blending together to create visual harmony. To that end, three major projects were completed in 2009.

In May we were joined by volunteers *Barbara Rickard*, *Danielle Kaveney*, *Peter* and *Marilyn Hasenpusch* for our spring ritual of filling the more than a dozen planters with colorful annuals to complement the building; soft peach and apricot, bright yellows and oranges with accents of red.

In June the white garden was completely replanted with variegated hostas and several types of ferns to add cool greens and whites to the shady kitchen side of the house. After *Dick Minekime* added soil, *Barb Rickard* and *James Garland* joined us in planting and mulching the area. A bark walkway bordered by sweet woodruff added the finishing touch.

August brought a windfall of over 300 iris bulbs, generously donated by the WNY Iris Society. Willing workers *Beth Bloomquist*, *Danielle Kaveney*, *Barbara Rickard* and *Jill Barille* joined us in planting the bulbs along the stone wall along the visitor center walkway. This summer will bring an exciting display of color in shades of purples and pinks, browns and golds!

We welcome you to join us on the *Green Team* this summer as we once again add color and form to blend house and nature together for a joyous expression of *Frank Lloyd Wright's* lakeside creation - Graycliff.

—Kathy and Dale Marriott, Lead Gardeners



Barbara Rickard & Dale Marriott by the raised planter



Marilyn and Peter Hasenpusch tending the rose garden



Visual Harmony – The Beauty of Nature



On the lawn at Graycliff with Darwin Martin Foster and Margaret Foster. Circa 1932. Note the striking rustic garden bench.

Marjorie L. Quinlan: An Appreciation

During her life (1919-2010) Marjorie Quinlan was able to see serendipity twice in regard to the rescue of two designs of Frank Lloyd Wright homes for the Darwin D. Martin family.

Her book, *Rescue of a Landmark: Frank Lloyd Wright's Darwin D. Martin House*, she writes of the Buffalo Frank Lloyd Wright homes as the saga of two families, one who built and one who rescued an important Frank Lloyd Wright House.¹ She is referring to Darwin D. Martin (built for) and Sebastian Tauriello (rescued the Darwin D. Martin House).

Marge became part of the family of Graycliff's grassroots rescue in 1997 by helping to write the nomination application to New York State's National Registry. She kept involved in various activities for Graycliff even after its purchase, as well as served on the Board of Directors. She was very aware of Graycliff's restoration needs; both physically on the site, and historically in its perception in the styles of Frank Lloyd Wright.

It is with this in mind that I personally dip into the well of love and memory of Marge at Graycliff. Marge was a curator for the exhibit at the Amherst Museum, "The Larkin Way". Her knowledge of numerous Larkin collectable history, and local Larkin Building interests gave birth to the first Larkin Collectors Exhibit at Graycliff in 2001. It was a huge success, and saw a repeated showing for 2 more years. It raised funds and awareness for Graycliff.

Graycliff also had numerous tea parties with talks from a variety of historian and book authors. Marge gave a wonderful talk about her research for her book, *Rescue of a Landmark: Frank Lloyd Wright's Darwin D. Martin House*.

Her passion to see that historic preservation championed in Western New York inspired me. Marge will be remembered that she was involved in serendipity at Graycliff as a rescuer. On behalf of Graycliff's Board and its members, we wish to give our condolences to the Quinlan family.

—Diane Schrenk



Marjorie L. Quinlan

Footnotes: 1) *Rescue of a Landmark: Darwin D. Martin House*, Marjorie L. Quinlan, pg 85.

■ ■ The Pavilion Shop at Graycliff: Always Great Gift Ideas ■ ■



Wear an Actual Piece of Graycliff! Necklace in sterling and original copper, based on Graycliff's Diamond Window.



Graycliff's signature Diamond Window settings to Grace Your Table...or make the Perfect Gift!



Exclusively Graycliff Apparel: Sweatshirts and Tees in rich hues, Baseball Caps and Boating Caps too.

FRANK
LLOYD
WRIGHT

Great books, jewelry, apparel, home furnishings (table runners, pillows, throws) tableware, note cards...many more ideas for that special someone.

And Graycliff Conservancy Membership always makes a great gift too!

A Graycliff Exclusive: China created specifically for Graycliff by Buffalo China, embellished with an Arts and Crafts inspired design based on Graycliff's signature Diamond Window.

Available as individual mugs, plates, and soup/salad/cereal bowls; or as place settings.

OPEN
YEAR
ROUND
Call for hours
716-947-9217



Your membership is an investment in Graycliff – help us keep up the momentum!
Members are vital to restoring and preserving Frank Lloyd Wright's Graycliff Estate.

Members enjoy free admission for Graycliff tours, a 10% discount on gift shop purchases, a free subscription to our twice annual newsletter and advance notice and/or free admission to special events. Best of all, you are engaging in an active role in saving a masterpiece of Frank Lloyd Wright.

BASIC MEMBERSHIP

All Conservancy Members enjoy the following benefits:

- 10% discount at Gift Shop
- Subscription to the Graycliff Conservancy newsletter
- Discounts on educational programs and lectures

INDIVIDUAL – \$35

Free admission (all year) for 1 adult for Standard Tours.

FAMILY – \$60

Free admission (all year) for 2 adults and 2 students for Standard Tours.

FRIEND – \$75

Your choice of free admission (all year) for 4 adults for Standard Tours *or* In-depth Tours for 2 adults.

SUPPORTING – \$100

Your choice of free admission (all year) to 4 adults for Standard Tours/In-Depth Tours; *or* Master Architectural Tours for 2 adults.

SUPPORTING PLUS – \$150

All SUPPORTING benefits *plus* a complimentary gift membership (individual or family)

Membership is tax deductible to the extent provided by law.

GRAYCLIFF'S "WRIGHT CIRCLE" OF LEADERSHIP

The Wright Circle is a dedicated group of individuals whose generous contributions are essential to restoring and sustaining this historic landmark.

Wright Circle benefits include All Basic Membership Benefits, *plus...*

SUSTAINING – \$250

- Invitation to Wright Circle receptions and events
- Complimentary gift membership (individual or family)
- 2 free admissions for special architectural tours, lectures or educational programs

CONTRIBUTOR – \$500

- All of the above "Wright Circle" benefits, *plus...*
- A total of 4 free admissions for special architectural tours, lectures or educational programs

BENEFACTOR – \$1,000

- All of the above "Wright Circle Contributor" benefits, *plus...*
- A private architectural tour for 6 (by reservation) with the Executive Director and/or Board President

YOUR MEMBERSHIP IS CRUCIAL TO SECURE GRAYCLIFF'S FUTURE

NAME _____

ADDRESS _____

CITY _____ STATE _____ ZIP _____

PHONE _____ E-MAIL _____

Please list my/our name as follows in any donor listing: _____

Please check box next to Membership Level Amount enclosed \$ _____

VISA MasterCard CHECK ENCLOSED Checks payable to: Graycliff Conservancy

CARD # _____ EXP. DATE _____

SIGNATURE _____

Thank You for Your Generous Support!

If you are interested in more information about other gift opportunities at Graycliff, please call 716-947-9217 and ask to speak to the Executive Director.



GRAYCLIFF

CONSERVANCY, INC.

6472 Old Lake Shore Road
P.O. Box 823
Derby, NY 14047

DISCOVER GRAYCLIFF • *“Located along the Seaway Trail, New York State’s only National Scenic Byway”*
National Register of Historical Places • New York State Landmark • Save America’s Treasures - Official Project

Tours Available Year Round by Reservation 716-947-9217

- e-mail: graycliff@verizon.net • Web: www.GraycliffEstate.org
- Martin House - Graycliff Joint Tour Packages also available...call for details

Call For Volunteers • Join us... and discover Graycliff!

- Tour Guides and Chaperones-The Docent Committee provides training for interested volunteers.
- Gift Shop-Discover the fun of working with people and the many items in our specialty shop
- Green Teams-Maintaining the house, gardens and grounds
- Special Events-Both onsite and off.

Interested in helping? Please call us at 947-9217 or by e-mail at graycliff@verizon.net

Thanks to the following businesses/organizations for their support:

EZ Graphics, Edw. A. Habermehl Co., Lauer-Manguso & Associates, Scott Wood Design, Insty Prints, Hadley Exhibits, BCO Industries, Custom Tee Activewear, Artvoice, WNED, WBFO, Buffalo News, Botanicus, Explore New York Magazine, The Turf Doctor, Arbordale Nurseries, Chiavettas Greenhouse, Susan Eck, The Roycroft Inn, Buffalo & Erie County Historical Society, Western New York Heritage Magazine, Forest Lawn, East Aurora Advertiser, Carl Schmitter Photography, Avenue Art & Frame, The Martin House Restoration Corporation, University at Buffalo Archives, University at Buffalo, Buffalo Rising, The Bee Publications, The Arts Council of Buffalo and Erie County, Buffalo Niagara Convention and Visitors Bureau, Town of Evans, The Roycroft Restoration Corp., Jim Bush Photography, Chateau Buffalo Wine Shop, BRD Construction, Redwood Creek Winery, Jubilee Markets, City View Properties, The Larkin Building at Exchange, Cannon Design, NY-PA Collector, Pat's Pizza, Premier Wines, Mark Hertzberg Photography, The Buffalo Downtowner, and New York State Council on the Arts.



Graycliff / J. Bush

**Join the Graycliff Conservancy
and Enjoy Free Tours for 1 Whole Year**


*“Wright was inspired...
Spectacular lakefront site...”*
Town & Country magazine

*“Surprisingly Beautiful...
I was very impressed”*
Dr. Neil Levine - Wright Scholar

RATED ★★★★★ F.L. WRIGHT FIELD GUIDE



6472 OLD LAKE SHORE RD., DERBY, NY
20 mins. south of Buffalo on the cliffs of Lake Erie

 **M&T Bank** Funding support provided by M&T Bank and the County of Erie