

ATP Auto Non-Contact Tonometer / Pachymeter

Probe Handling Instructions

The enclosed probe is a permanently filled, solid tip probe. Since the plastic probe tip is not replaceable, use extreme care not to nick or scratch the probe tip. Always place the plastic protective cover over the probe tip when not in use.

NOTE: FOLLOW THESE INSTRUCTIONS ONLY IF YOU ARE INSTALLING A REPLACEMENT PROBE. IF YOUR INSTRUMENT IS NEW, THE PROBE HAS ALREADY BEEN CALIBRATED TO THE INSTRUMENT.

CAUTION: YOU MUST ALWAYS USE THE PROBE HOLDER TO SECURE THE PROBE WHEN NOT IN USE.

Probe Calibration Instructions

1. Power down the ATP instrument
2. Plug the new probe into the instrument
3. Power up the instrument



- 4. Push the button below the **Mode** icon



- 5. Push the button below the **Setup** icon

6. Select **ATP Setup**

7. Select **Probe**

8. Select **NEW**

9. Take the cover off the tip of the probe

10. Submerge probe tip at an angle in cup of room temperature water holding it one inch from any surface. Gently tap the probe to ensure there are no air bubbles around the tip.



- 11. Push the button below the **Probe** icon

12. Once probe calibration is complete, the ATP will display the status of the calibration

- **Status OK**

- **Status Failed***



- 13. Push button below the **Return** icon four times to return to the measure screen.

***IF CALIBRATION FAILED, REPEAT STEPS 1-12 A SECOND TIME. IF CALIBRATION FAILS A SECOND TIME, CONTACT REICHERT.**

Ocular Response Analyzer

Probe Handling Instructions

The enclosed probe is a permanently filled, solid tip probe. Since the plastic probe tip is not replaceable, use extreme care not to nick or scratch the probe tip. Always place the plastic protective cover over the probe tip when not in use.

NOTE: FOLLOW THESE INSTRUCTIONS ONLY IF YOU ARE INSTALLING A REPLACEMENT PROBE. IF YOUR INSTRUMENT IS NEW, THE PROBE HAS ALREADY BEEN CALIBRATED TO THE INSTRUMENT.

CAUTION: YOU MUST ALWAYS USE THE PROBE HOLDER TO SECURE THE PROBE WHEN NOT IN USE.

Probe Calibration Instructions

Installing and Calibrating a New Probe

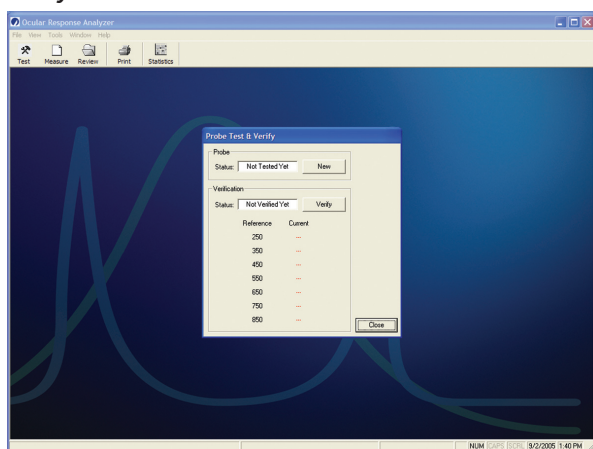
Calibration of the pachymeter probe is performed at the factory. Recalibration should only be required when installing a new probe.

Turn the measurement head off, connect the new pachymeter probe, and switch the measurement head back on. Wait a few seconds until the alignment system “homes” itself.

Remove the cap from the tip of the new pachymeter probe and submerge the probe tip into a room-temperature glass of water. Hold the probe so that the tip is approximately one inch from the bottom or sides of the glass. Tap the probe a few times to ensure that there are no air bubbles on the probe tip.

Probe Test and Verify Window

Select **Options** from the **Tools Menu** and click on the **System Setup Tab**. Click the **Test Probe Button** to enter the **Test & Verify Window**.



Click the **New Button** on the **Test and Verify Window**. The calibration process will take only a few seconds. The software will inform the user if the verification is successful or not.* Click the **Close Button** when complete.

***IF CALIBRATION FAILS, REPEAT THE PROCESS ABOVE.
IF CALIBRATION FAILS A SECOND TIME, CONTACT REICHERT.**