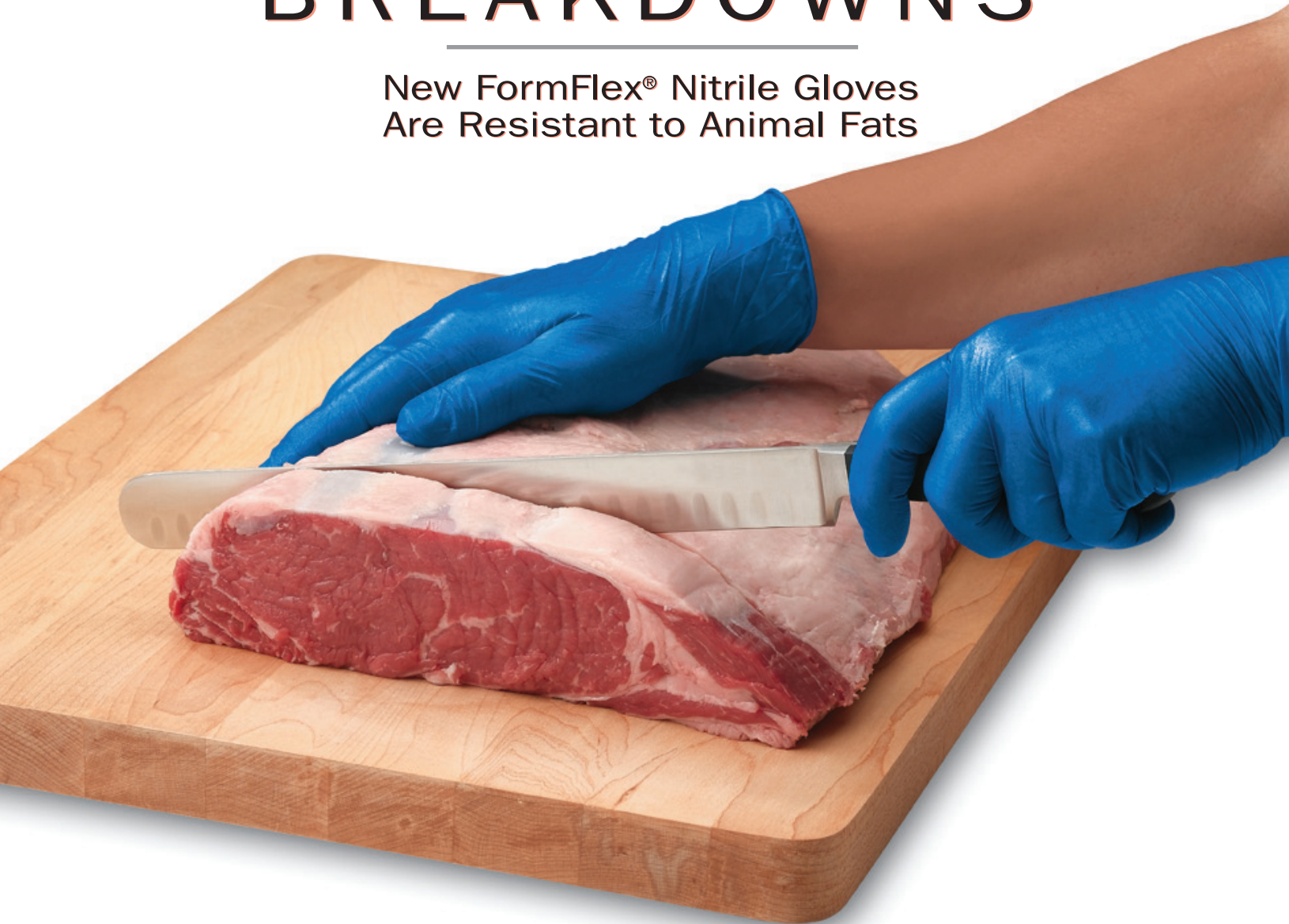


# NO MORE BREAKDOWNS

New FormFlex® Nitrile Gloves  
Are Resistant to Animal Fats



**Durable, Formfitting Gloves Are Perfect For  
Prepping Raw Meats & Shellfish.**

FormFlex® Nitrile Gloves resist animal fats, which means they last longer when handling foods such as raw meat and shellfish. Extremely tough and durable, the gloves also offer enhanced fingertip sensitivity with a soft, formfitting feel.

  
**FoodHandler**®  
risk nothing.®

# TOUGH, YET SENSITIVE

Durable Gloves Provide  
Exceptional Fingertip Sensitivity

## New FormFlex® Nitrile Gloves

FormFlex® Nitrile Gloves are not only resistant to breakdowns from animal fats, they are also puncture resistant, making them ideal for use when deboning meats or handling shellfish. The gloves last longer when handling animal fats and require fewer changes, which means they will save you time and money. Plus, your employees will be more likely to wear them, because they offer a soft, formfitting feel with enhanced dexterity and grip.



Made specifically for tasks like breading and battering chicken and pork, removing shells from shellfish and deboning raw meats. Gloves come in a bright blue color that's easy for employees to identify for specific tasks.

Item #	Size	Description	Case Pack	Total Units
FORMFLEX® NITRILE GLOVES				
103-FF12-CP	S	Formfitting Nitrile Gloves	4/100	400
103-FF14-CP	M	• Resistant to animal fats	4/100	400
103-FF16-CP	L	• Durable & puncture resistant	4/100	400
103-FF18-CP	XL	• Enhanced dexterity & grip	4/100	400

CAUTION: Components used in making these gloves may cause allergic reactions in some users. Follow your institution's policies for use. For single use only.



Available in handy convenience pack; 100 gloves per pack.

 **FoodHandler**® risk nothing.®

For more information on our full line of safe food handling products and programs, please visit [www.foodhandler.com](http://www.foodhandler.com) or contact Customer Service at 1-800-338-4433.

FoodHandler Inc. • 2301 Lunt Avenue • Elk Grove Village, IL 60007