

KYSOR Panel Systems®

Designers, Manufacturers, and Installers of Panelized Systems Providing Controlled Environments Since 1947

- WALK-IN COOLERS/FREEZERS
- REPLACEMENT DOORS, HARDWARE, AND ACCESSORIES
- TEMPERATURE/HUMIDITY/AIR FLOW CONTROLLED ROOMS

KYSOR PANEL SYSTEMS
PARTS DEPARTMENT
4201 North Beach Street,
Fort Worth, TX 76137

4 CONVENIENT WAYS TO PLACE YOUR ORDER:

ORDER LINE: (800) 633-3426 x2505

FAX: (817) 231-0603

E-MAIL: parts@kysorpanel.com

ONLINE: www.kysorpanel.com





PRICE LIST

WALK-IN HARDWARE AND ACCESSORIES



✓ **Quality Replacement Parts**
For Most Walk-In Brands

✓ **Retrofit Doors**
Made to Accommodate Your Walk-In

✓ **Stock Items**
Ship Within 24 Hours

✓ **Custom Made Items to Your Dimensions**
Ship Within 48 hours

Kysor Panel Systems®... Unrivalled Service and Support

In our commitment to provide you with the best possible service, we need your help to ensure fast processing of your order.



CUSTOMER CHECKLIST



When placing your order, please have the following information available:

1. Part number(s)
2. Quantity determined for each part ordered
3. Ship-to address, if it is different than the billing address
4. Any special instructions for shipping or handling

* For special or custom configuration of a standard product, please call for price quote

PLACING AN ORDER



Our hours of operation are from 8:00 a.m. to 5:00 p.m. (Central Time). However, our convenient message service lets you place your order, 24 hours a day. Orders placed through this service will be processed the next morning. To order, Call 800-633-3426 Ext 2505; OR E-mail parts@kysorpanel.com. Visit us online at www.kysorpanel.com.

RETURNS



Should you need to return items to KYSOR Panel Systems, please adhere to the following procedures which will expedite your exchange or credit:

1. Before returning item(s), call KYSOR Panel Systems customer service at 800-633-3426, ext, 2505 for a Return Authorization Number. Please have the following information when you call:
 - a. Your KYSOR Panel Systems customer number
 - b. The part number(s) for all item(s) returned
 - c. The invoice or order number for the parts returned
2. Carefully package all returned items to prevent shipping damage.
3. Write the Return Authorization Number on the outside of the package, and reference the number on any paper accompanying the items.
4. Ship to KYSOR Panel Systems
PARTS DEPARTMENT, 4201 NORTH BEACH STREET,
FORT WORTH, TX, 76137.
5. All returns are subject to a 15% restocking fee.

ONE YEAR GUARANTEE



KYSOR Panel Systems has put significant time and effort into designing, manufacturing, or selecting all the fine products within this catalog. Therefore we are able to fully guarantee every product we sell to be free of manufacturing defects for one year from time of purchase. Should any product fail, for whatever reason due to manufacturing defect, KYSOR Panel will replace that product at no charge to the customer—labor not included.

Product prices and availability are subject to change without notice. Prices effective 11/09.

DOOR HARDWARE AND ACCESSORIES
Page 5 LATCHES

ITEM NUMBER	DESCRIPTION	PRICE
K56	Latch Assembly	\$115.00
K486A	Inside Release Only	\$20.00
K56S	Strike Only	\$45.00
K55	Latch Assembly	\$80.00
K486D	Inside Release Only	\$20.00

Page 6 LATCHES, CONT'D.

ITEM NUMBER	DESCRIPTION	PRICE
K77	Latch Assembly	\$115.00
K486C	Inside Release Only	\$20.00

Page 7 LATCHES, CONT'D.

ITEM NUMBER	DESCRIPTION	PRICE
K1236FM	Heavy Duty Locking Handle	\$150.00
P101	Premco Latch Assembly	\$140.00

Page 8 HINGES

ITEM NUMBER	DESCRIPTION	PRICE
K1248	Hinges Spring Assisted	\$35.00
K1248FM	Flushmount Hinge Spring Assisted	\$35.00
K1277	Heavy Duty Strap Hinge 21" Strap Cam Lift	\$60.00
K1277S	Heavy Duty Strap Hinge 11 5/8" Strap Cam Lift	\$35.00

Page 9 HANDLES

ITEM NUMBER	DESCRIPTION	PRICE
K911	Classic Pull Handle	\$25.00
K573	Offset Pull Handle (Obsolete Part #K578)	\$10.00

Page 10 DOOR CLOSERS

ITEM NUMBER	DESCRIPTION	PRICE
K1091	Spring Action Door Closer	\$55.00
K1094	Hydraulic Door Closer	\$55.00
K1094FM	Flushmount Hydraulic Door Closer	\$55.00
K1097	Spring Action Door Closer	\$250.00

Page 11 LOCKS

ITEM NUMBER	DESCRIPTION	PRICE
K944	Locking Deadbolt	\$150.00

Page 12 SWEEPS & HARNESSSES

ITEM NUMBER	DESCRIPTION	PRICE
DSC	Door Sweep Assemblies Cooler (All Sizes)	\$55.00
DSF	Door Sweep Assemblies Freezer (Up to 60")	\$80.00

DOOR HARDWARE AND ACCESSORIES
Page 12 SWEEPS & HARNESS, CONT'D.

ITEM NUMBER	DESCRIPTION	PRICE
DSF	Door Sweep Assemblies Freezer (60" & Over)	\$95.00
EMF	EMF Wiring Harness (Male & Female)	\$30.00
EMFF or EMFM	EMF Wiring Harness (Male or Female) each	\$15.00

Page 13 GASKETS

ITEM NUMBER	DESCRIPTION	PRICE
DGSI	Magnetic Snap In Door Gasket (All Sizes)	\$55.00
DGSO	Screw On Door Gasket (All Sizes)	\$55.00

Page 14 GASKETS, CONT'D.

ITEM NUMBER	DESCRIPTION	PRICE
DGFRP	FRP Door Gasket (All Sizes)	\$55.00

Page 15 DOOR FRAME HEATERS

ITEM NUMBER	DESCRIPTION	PRICE
DH	Door Frame Heaters (All Sizes)	\$50.00
DFHC	Door Frame Heater Cover	\$3.00 / ft.
DFHR	Door Frame Heater Retainer	\$2.00 / ft.

Page 16 DOOR JAMB GUARDS

ITEM NUMBER	DESCRIPTION	PRICE
JGISLG or S	Inside Legs (All Sizes)	\$45.00
JGOSLG or S	Outside Legs (All Sizes)	\$40.00
JGISHG or S	Inside Header (All Sizes)	\$45.00
JGOSHG or S	Outside Header (All Sizes)	\$40.00
JGL1PG or S	1 pc Leg up to 96"	\$50.00
JGL1PG96 or S	1 pc Leg 96" and over	\$55.00
JGH1PG or S	1 pc Header (All Sizes)	\$50.00
JGTB	Thermal Break	\$1.00 / ft.

Page 17 DOOR THRESHOLDS & KICKPLATES

ITEM NUMBER	DESCRIPTION	PRICE
THRE-XX	Thresholds	\$75.00
KP-XX	Kickplates	CALL

Page 18 MISCELLANEOUS

ITEM NUMBER	DESCRIPTION	PRICE
VUW14H	14" x 14" Heated	\$325.00
VUW14	14" x 14" Non Heated	\$210.00
VUW24H	14" x 24" Heated	\$475.00
VUW24	14" x 24" Non Heated	\$310.00
PB-XX	Plug Buttons	\$0.17
TL3	3 Way Light Switch	\$12.50

WALK-IN ACCESSORIES

Page 19 THERMOMETERS, ALARMS

ITEM NUMBER	DESCRIPTION	PRICE
T-2	2" Dial Thermometer	\$20.00
T-3.5	3 1/2" Dial Thermometer	\$40.00
DT-7	Digital Thermometer	\$40.00
M-75F or S	Modularm 75	\$320.00

Page 20 LIGHTING

ITEM NUMBER	DESCRIPTION	PRICE
180X	Vapor Proof Light Fixture Assembly (All Models)	\$20.00
180XG or L	Lexan or Glass Globes (All Models)	\$5.00

Page 21 VENTILATION

ITEM NUMBER	DESCRIPTION	PRICE
1832H	Relief Vent 4 1/2" Heated	\$60.00
1832NH	Relief Vent 4 1/2" Non Heated	\$40.00
1825H	Relief Vent 2" Heated	\$60.00
1825NH	Relief Vent 2" Non Heated	\$40.00

Page 22 VENTILATION, CONT'D.

ITEM NUMBER	DESCRIPTION	PRICE
1845-XX	Magnum Flow Heated Ventilator	\$475.00

Page 23 JOINT INSULATION

ITEM NUMBER	DESCRIPTION	PRICE
BS-XX	Insulated Batten Strip Kits (Natural and White)	\$7.00 / ft.

Page 23 JOINT INSULATION, CONT'D.

ITEM NUMBER	DESCRIPTION	PRICE
BT-XXXX	Butyl Venture Tape	\$50 / roll
BT-001	Butyl	\$4.50 / tube
S-X	Silicone (Grey, White & Clear)	\$3.50 / tube

Page 25 TRIM

ITEM NUMBER	DESCRIPTION	PRICE
OUTSIDE CORNER TRIM		
OSCTN-X	Natural Embossed Galvanized 3", 4" & 6"	\$1.50 / ft.
OSCTW-X	White Embossed Galvanized 3", 4" & 6"	\$1.70 / ft.
OSCTS-X	Stainless Steel 3", 4" & 6"	\$7.00 / ft.

WALK-IN ACCESSORIES

Page 26 TRIM, CONT'D.

ITEM NUMBER	DESCRIPTION	PRICE
INSIDE CORNER TRIM		
ISCTN-X	Natural Embossed Galvanized	\$1.50 / ft.
ISCTW-X	White Embossed Galvanized	\$1.70 / ft.
ISCTNA-X	Natural Embossed Aluminum	\$3.00 / ft.
ISCTWA-X	White Embossed Aluminum	\$3.50 / ft.
ISCTS-X	Stainless Steel	\$7.00 / ft.

Page 26 TRIM, CONT'D.

ITEM NUMBER	DESCRIPTION	PRICE
FLAT TRIM		
FTN-X	Natural Embossed Galvanized 3", 4" & 6"	\$1.40 / ft.
FTW-X	White Embossed Galvanized 3", 4" & 6"	\$1.60 / ft.
FTS-X	Stainless Steel 3", 4" & 6"	\$7.00 / ft.

Page 27 FLOOR

ITEM NUMBER	DESCRIPTION	PRICE
R-XXX	Ramps	CALL

Page 27 FLOOR, CONT'D.

ITEM NUMBER	DESCRIPTION	PRICE
FLOOR COVERING		
FOL	Diamond Tread Plate	CALL
WC	Wainscotting	CALL

Page 29 FLOOR, CONT'D.

ITEM NUMBER	DESCRIPTION	PRICE
SCREED		
SCA	Concealed Galvanized	\$0.80 / ft.
SCW	Concealed Wood	\$10.00 / ft.
SCH	PVC Channel	\$2.60 / ft.
SA	Continuous Angle	\$0.80 / ft.
COVE BASE		
CB-X	Cove Base Trim	CALL

REPLACEMENT DOORS AND PARTS

PAGE 30 KYSOR SWING DOOR PARTS

ITEM NUMBER	DESCRIPTION	PRICE
	Kysor Swing Replacement Doors	CALL

Page 33 KYSOR SLIDING DOOR PARTS

ITEM NUMBER	DESCRIPTION	PRICE
DOOR CLOSER ASSEMBLY		
9-8200-RL-251	Door Closer Assmebly (9-8200-000-194 Obsolete Part #)	\$150.00
	External Cover (9-8200-00155-0117 Obsolete Part #; sold as assembly only)	

DOOR HANGER BRACKET		
9-8200-00457-0025K	Door Hanger Brackets	\$20.00
9-8200-00152-0025K	Retainer for Cover for Door Hanger Bracket	\$15.00
9-8200-00-150-0117	Cover for Door Hanger Bracket	\$35.00

TROLLEY HANGER		
9-8200-000-98	Trolley Hanger Assembly	\$25.00

Page 34 KYSOR SLIDING DOOR PARTS, CONT'D.

ITEM NUMBER	DESCRIPTION	PRICE
WALL GUIDE		
	9-8200-00-442-0095 Obsolete Part #; sold as assembly only	
9-8200-R or L-251	Wall Guide Rail Assembly (Specify Right or Left)	\$40.00

Page 35 KYSOR SLIDING DOOR PARTS, CONT'D.

ITEM NUMBER	DESCRIPTION	PRICE
GASKETS		
9-8200-00612-2210	Door Gasket 21' Roll	\$65 / roll
9-8500-00-881-0086	Side Door Gasket Retainer	\$10.00
9-8500-00-881-0040	Top Door Gasket Retainer	\$10.00
SWEEP GASKET		
9-8500-00-627-0040	Sweep Gasket Material 48"	\$20.00
9-8500-00-432-0040	Sweep Gasket Retainer	\$10.00

REPLACEMENT DOORS AND PARTS

Page 37 JAMISON MARK IV SLIDING DOOR PARTS

ITEM NUMBER	DESCRIPTION	PRICE
SINGLE DOOR PARTS		
4404-495-01	Leading Edge Wedge 4" & 6" Stainless (4404-021-01 Obsolete Part #)	\$35.35
4404-552-01	2" Leading Edge Wedge Stainless	\$72.29
4404-381-01	5' Wide Front & Rear Strafing Bar	\$55.92
4404-381-02	6' Wide Front & Rear Strafing Bar	\$62.28
4404-381-03	7' Wide Front & Rear Strafing Bar	\$72.70
4404-381-04	8' Wide Front & Rear Strafing Bar	\$76.88
4404-381-06	10' Wide Front & Rear Strafing Bar	\$95.60

BI PARTING (FRONT) DOOR PARTS		
4404-382-02	4404-381-02** 6' Wide Front & Rear Strafing Bar (4404-381-02 Obsolete Part #)	\$62.28
4404-382-03	4404-381-03** 7' Wide Front & Rear Strafing Bar (4404-381-03 Obsolete Part #)	\$72.70
4404-382-04	4404-381-04** 8' Wide Front & Rear Strafing Bar (4404-381-04 Obsolete Part #)	\$76.88
4404-382-06	4404-381-06** 10' Wide Front & Rear Strafing Bar (4404-381-06 Obsolete Part #)	\$95.60

BI PARTING (REAR) DOOR PARTS		
4404-383-02	6' Wide Front & Rear Strafing Bar (4404-381-02 Obsolete Part #)	\$62.28
4404-383-03	7' Wide Front & Rear Strafing Bar (4404-381-03 Obsolete Part #)	\$72.70
4404-383-04	8' Wide Front & Rear Strafing Bar (4404-381-04 Obsolete Part #)	\$76.88
4404-383-06	10' Wide Front & Rear Strafing Bar (4404-381-06 Obsolete Part #)	\$95.60
4404-543-01	Trailing Edge Wedge 2" Door	\$67.55
4404-379-01	Trailing Edge Wedge 4" Door	\$35.00
4404-507-01	Trailing Edge Wedge 6" Door (4404-379-01 Obsolete Part #)	\$85.28
552-151	Sill Gasket	\$ 3.00 / ft.
251010	Front Door Pull Galvanized (4038-001-02 Obsolete Part #)	\$21.00
4038-001-02	Front Door Pull Stainless (4038-008-01 Obsolete Part #)	\$268.44
4038-008-01	Rear Door Pull	\$25.33
4038-013-01	Rear Door Pul Bar	\$28.13
559-040	Rubber Bumper	\$2.78
932-008	Track Wedge	\$21.08

REPLACEMENT DOORS AND PARTS

Page 37 **JAMISON MARK IV SLIDING DOOR PARTS, CONT'D**

ITEM NUMBER	DESCRIPTION	PRICE
4404-386-04 DISCONTINUED	Reversing Edge Retainer Galvanized	n/a
4404-386-14	Reversing Edge Retainer Stainless	\$135.77
931-021	Frame Wedge	\$25.00

Page 38 **JAMISON MARK IV SLIDING DOOR PARTS, CONT'D.**

ITEM NUMBER	DESCRIPTION	PRICE
DISCONTINUED	Single Door Track in Steel and Biparting Door Track, Steel	n/a

Page 39 **JAMISON MARK IV SLIDING DOOR PARTS, CONT'D.**

ITEM NUMBER	DESCRIPTION	PRICE
SINGLE DOOR TRACK, PLASTIC		
4404-397-03	5' Track Angle Support	\$712.15
4404-397-04	5'- 6" Track Angle Support	\$594.83
4404-397-05	6' Track Angle Support	\$588.30
4404-397-07	7' Track Angle Support	\$890.17
4404-397-09	8' Track Angle Support	\$778.78
4404-397-11	9' Track Angle Support	\$895.00
4404-397-13	10' Track Angle Support	\$925.00
769-102	Hex Head Washer Screw	\$1.60
559-033	Track Stop Bumpers	\$3.00
931-024	Leading Edge Plastic Ramp Left Hand	\$61.89
931-022	Leading Edge Plastic Ramp Right Hand	\$61.89
4404-403-XX	Intermediate Track Single	CALL
4404-404-XX	Intermediate Track Bi Parting	CALL
931-025	Trailing Edge Plastic Ramp Left	\$61.89
931-023	Trailing Edge Plastic Ramp Right	\$61.89
4404-403-XX	Tail Tack Piece Single	CALL
4404-404-XX	Tail Tack Piece Biparting	CALL
486-153	Track Stop	\$37.26
751422	Self Tapping Screw (765-045 Obsolete Part #)	\$0.48
752205	Thread Form Screw (765-213 Obsolete Part #)	\$1.20

REPLACEMENT DOORS AND PARTS

Page 40 **JAMISON MARK IV SLIDING DOOR PARTS, CONT'D.**

ITEM NUMBER	DESCRIPTION	PRICE
CARRIER ASSEMBLY		
4404-021-01	Hanger Sub Assembly	\$188.69
751-468	Bolt	\$11.01
4404-00-701	Hanger Bracket 4 " & 6" Door (769-102 Obsolete Part #)	\$144.74
4404-54-101	Hanger Bracket 2" Door (769-102 Obsolete Part #)	\$184.49
7544-022	Roll Pin (559-033 Obsolete Part #)	\$12.51
752-113	Hex Nut	\$2.83
486-055	Leading Edge Trolley Wheel Galvanized	\$141.57
486-060	Leading Edge Trolley Wheel Stainless (486-050 Obsolete Part #)	\$283.03
486-090	Leading Edge Trolley Wheel Heat Treated (486-060 Obsolete Part #)	\$141.57
486-050	Trailing Edge Trolley Wheel Galvanized	\$141.57
486-061	Trailing Edge Trolley Wheel Stainless	\$283.03
486-091	Trailing Edge Trolley Wheel Heat Treated	\$141.57
765-9309	Screw	\$0.52
4404-093-01	Track Cleaner	\$26.32
752-155	Hex Jam Nut	\$3.24
753-550	Ext Tooth Lock Washer	\$0.45
769-102	Hex Bolt	\$2.16
753-505	Spring Lock Washer	\$0.19
751-438	Hex Bolt	\$1.02
CARRIER		
4404-008-01	Carrier Single 5'	\$151.00
4404-008-02	Carrier Single 6'	\$170.91
4404-008-03	Carrier Single 7'	\$204.97
4404-008-04	Carrier Single 8'	\$216.67
4404-008-31	Carrier BiParting 6'	\$112.20
4404-008-32	Carrier BiParting 7'	\$123.14
4404-008-33	Carrier BiParting 8'	\$130.29
4404-008-34	Carrier BiParting 10'	\$156.98
486-048	Trolley Wheel Spacer	\$4.65

REPLACEMENT DOORS, PARTS

Page 41 **JAMISON MARK IV SLIDING DOOR PARTS, CONT'D.**

ITEM NUMBER	DESCRIPTION	PRICE
STAY ROLLER ASSEMBLIES		
4404-732-01	Complete Roller Assembly Freezer, Available as Assembly only	\$120.33
4404-019-02	Complete Rollery Assembly Cooler, Available as Assembly only	\$114.70

Page 42 **JAMISON MARK IV SLIDING DOOR PARTS, CONT'D.**

ITEM NUMBER	DESCRIPTION	PRICE EA.
GASKET ASSEMBLY; SPECIFY LEFT OR RIGHT		
4404-010-01	Sub Assembly Horizontal 5' (440402101 Obsolete Part #)	\$191.50
4404-010-02	Sub Assembly Horizontal 6' (440401012 Obsolete Part #)	\$270.41
4404-010-04	Sub Assembly Horizontal 8' (44040104 Obsolete Part #)	\$277.13
4404-010-06	Sub Assembly Horizontal 10' (440402106 Obsolete Part #)	\$238.92
440401011	Sub Assembly Vertical 6'	\$229.78
440401012	Sub Assembly Vertical 7'	\$274.73
440401013	Sub Assembly Vertical 8'	\$280.04
440401014	Sub Assembly Vertical 9'	\$243.71
440401015	Sub Assembly Vertical 10'	\$298.64

GASKET RETAINER

4404016101	Left Galvanized 5' (440401601 Obsolete Part #)	\$69.98
4404016102	Left Galvanized 6' (440401602 Obsolete Part #)	\$71.05
4404016103	Left Galvanized 7' (440401603 Obsolete Part #)	\$78.81
4404016104	Left Galvanized 8' (440401604 Obsolete Part #)	\$80.75
4404016105	Left Galvanized 9' (440401605 Obsolete Part #)	\$92.56
4404016106	Left Galvanized 10' (440401606 Obsolete Part #)	\$94.01
440401621	Left Stainless 5'	\$69.98
440401622	Left Stainless 6'	\$71.05
440401623	Left Stainless 7'	\$78.81
440401624	Left Stainless 8'	\$80.75
440401625	Left Stainless 9'	\$92.56
440401626	Left Stainless 10'	\$94.01

REPLACEMENT DOORS, PARTS

Page 42 **JAMISON MARK IV SLIDING DOOR PARTS, CONT'D.**

ITEM NUMBER	DESCRIPTION	PRICE
440401651	Right Galvanized 5'	\$69.98
440401652	Right Galvanized 6'	\$71.05
440401653	Right Galvanized 7'	\$78.81
440401654	Right Galvanized 8'	\$80.75
440401655	Right Galvanized 9'	\$92.56
440401656	Right Galvanized 10'	\$94.01
440401671	Right Stainless 5'	\$69.98
440401672	Right Stainless 6'	\$71.05
440401673	Right Stainless 7'	\$78.81
440401674	Right Stainless 8'	\$80.75
440401675	Right Stainless 9'	\$92.56
440401676	Right Stainless 10'	\$94.01
765361	Pan Head Screw (4404-093-01 Obsolete Part #)	\$0.80
552165	Gasket Outer Wrapper	\$2.60 / ft.
4404922	Flat Gasket Retainer	CALL
202-006	Screw For Flat Gasket Retainer	CALL

Page 44 **JAMISON RETAIL PRO SLIDING DOOR & PARTS**

ITEM NUMBER	DESCRIPTION	PRICE
PULL HANDLE ASSEMBLY		
251010	Pull Handle	\$25.33
403800801	Door Cup	\$42.42
403801301	Flush Pull Bar	\$28.13
440449501	Leading Edge Wedge	\$38.18
440437901	Trailing Edge Wedge	\$35.00
755366	Rivet Alum Pop	\$0.20
CARRIER ASSEMBLY		
H4466023	Carrier Assembly	CALL
H446602201	Hanger Bracket Sub Assembly	\$191.29
486048	Spacer	\$2.70
486055	Trolley Wheel	\$191.12

Page 45 **JAMISON RETAIL PRO SLIDING DOOR & PARTS, CONT'D.**

ITEM NUMBER	DESCRIPTION	PRICE
ADJUSTABLE BRACKET ASSEMBLY		
4466022010	Hanger Bracket Assembly	\$131.57
STAY ROLLER ASSEMBLY		
440401902	Stay Roller Assembly	\$114.70

REPLACEMENT DOORS AND PARTS

Page 46 REGENT SLIDING DOOR & PARTS

ITEM NUMBER	DESCRIPTION	PRICE
RS102	Closed Side Trolley End Cap	\$6.00
RS107	Open Side Trolley End Cap	\$15.00
RS105	End Track Cover	\$15.00
RS109	Door Handle	\$185.00
RS104	Door Suspension Bracket Cover	\$10.00
RS110	Door Suspension Bracket w/Bolt (RS106 Obsolete Part #)	\$69.00
RS106	Floor Cam	\$45.00
RS101	Door Gasket	\$ 9.00 / ft.
RS103	Bottom Door Guide	\$185.00
RS108	Floor Track	\$65.00

Page 48 CHASE DOUBLE ACTING STANDARD DOORS & PARTS

ITEM NUMBER	DESCRIPTION	PRICE
UPPER HINGE ASSEMBLY		
	Backer	\$12.00
1542	Upper Hinge Seal	\$19.00
5508	Roller Assembly	\$61.00
5561	V-Cam	\$61.00
5510	Upper Hinge Adapter	\$55.00

Page 49 CHASE DOUBLE ACTING DOORS STANDARD, CONT'D.

ITEM NUMBER	DESCRIPTION	PRICE
LOWER HINGE ASSEMBLY		
5510-3	Lower Hinge Adapter	\$59.00
1548	Solid Riser	\$1.25
5555-1	Pillow Block	\$61.00
5518	8 1/2" Standard Hinge Guard	\$40.00

Page 50 CHASE DOUBLE ACTING DOORS STANDARD, CONT'D.

ITEM NUMBER	DESCRIPTION	PRICE
SEALS, GASKET		
CS002	Top Seal	\$ 9.00 / ft.
1560	Back Edge Gasket 108" Piece	\$30.45
1558	Single Leading Edge Gasket	\$30.45
1560	Bottom Edge Gasket	\$30.45

REPLACEMENT DOORS AND PARTS

Page 52 CHASE DOUBLE ACTING RETAILER DOORS & PARTS

ITEM NUMBER	DESCRIPTION	PRICE
UPPER HINGE ASSEMBLY		
CR001	Upper Hinge Seal	\$18.00
5508C	Roller Assembly	\$72.00
55288	V-Cam	\$75.00
LOWER HINGE ASSEMBLY		
5577	Lower Hinge Guard	\$48.00

Page 53 CHASE DOUBLE ACTING DOORS RETAILER, CONT'D.

ITEM NUMBER	DESCRIPTION	PRICE
SEALS, GASKET		
CR002	Top Seal Gasket	\$ 9.00 / ft.
1613	Bottom Edge Gasket	\$23.00
1628	Leading Edge Gasket	\$24.00
1656	Leading Edge Gasket Bulb Style	\$ 3.65 / ft.
9080	Aluminum Nosing 102" Long	\$34.00

Page 55 CHASE DOUBLE ACTING DOORS PROLINE DOOR & PARTS

ITEM NUMBER	DESCRIPTION	PRICE
CP006	Proline Hinge	\$91.65
CP007	Bearing Clamp	\$38.10
1552	Upper Hinge Seal	\$17.25
1603	Back Edge Gasket	\$2.75 / ft.
1656	Leading Edge Gasket	\$3.65 / ft.,
CP001	Top Seal Gasket	\$9.00 / ft.
FH2/FH1	Lower/Upper Panel Holder	\$40.85

Page 56 CHASE DOUBLE ACTING DOORS OPTIONS

ITEM NUMBER	DESCRIPTION	PRICE
CWP	Door Window	CALL
CKP	Door Plates	CALL
CPP	Push Plates	CALL
CTDB	Tear Drop Bumpers	CALL
CSTB	Universal Slide Track Bumpers	CALL

Page 57 CHASE STRIP CURTAIN DOORS

ITEM NUMBER	DESCRIPTION	PRICE
	Chase Strip Curtain Doors	CALL

GLASS DOORS & SHELVING

PAGE 58 ANTHONY GLASS DOOR PARTS SERIES 101

ITEM NUMBER	DESCRIPTION	PRICE
20-12294-001	Access Hole Cover Black	\$2.81
02-14801-000	Door Gasket, Black prior to June 1998	\$ 9.92 / ft.
02-14160-2000	Door Gasket, Black July 1998 to present (0214160-1000 Obsolete Part #)	\$11.51/ ft.
45-11876-0002	Handle Slimline	\$44.15
50-10632-0001	Heater Wire	\$4.64 / ft.
60-10847-0004	Hinge Pin Black	\$47.87
60-10847-0003	Hinge Pin Silver	\$47.87
02-11807-0001	Hold Open Arm 1995 to 2003	\$36.43
15-14707-0001	Hold Open Arm 2003 to Present	\$34.43
02-10308-007	Torque Rod, Hex Base 1989 to Present	\$35.99

Page 59 ANTHONY GLASS DOOR PARTS SERIES 401

ITEM NUMBER	DESCRIPTION	PRICE
02-14799-0000	Door Gasket, Black 1990 to Present (20-13963-3513 Obsolete Part #)	\$ 9.92 / ft.
45-13595-2001	Handle Trimline Black	\$30.47
45-13595-0001	Handle Trimline Silver	\$30.47
50-10632-0001	Heater Wire	\$ 4.64 / ft.
60-10847-0004	Hinge Pin Black	\$47.87
60-10847-0003	Hinge Pin Silver	\$47.87
02-11807-0001	Hold Open Arm 1995 to 2003	\$36.43
15-14707-0001	Hold Open Arm 2003 to Present	\$34.43
02-10308-007	Torque Rod, Hex Base 1989 to Present	\$36.00

Page 60 ANTHONY LIGHTING PARTS SERIES 101 & 401

ITEM NUMBER	DESCRIPTION	PRICE
TB	T8 Ballast	\$150.00
45-11876-0002	Center Lens Mullion Cover Double	\$4.19
15-12445-0001	Center Mullion Lens Clip 1994 to Present	\$5.70
15-12325-0001	Center Mullion Lens Clip Prior to 1994	\$7.72
70-14564-0002	Center Mullion Lens Filler Cap Single (70-11860-0001 Obsolete Part #)	\$7.72
15-10131-0001	End Mullion Lens Clip	\$4.86

GLASS DOORS & SHELVING

PAGE 62 ANTHONY SHELVING

ITEM NUMBER	DESCRIPTION	PRICE
Correction: Noted as "Wide" in the catalog instead of "Depth"		
88-14531-XXXX	Rear Entry Shelf 24" Deep	CALL
88-14531-XXXX	Rear Entry Shelf 27" Deep	CALL
88-10076-XXXX	Front Entry Shelf 24" Deep	CALL
88-10076-XXXX	Front Entry Shelf 27" Deep	CALL
20-11313-1024	Black Plastic Price Tag Molding	\$8.96 / ft.
20-11313-2024	White Plastic Price Tag Molding	\$8.96 / ft.
20-11313-4024	Gold Plastic Price Tag Molding	\$8.96 / ft.
20-11313-8024	Silver Plastic Price Tag Molding	\$8.96 / ft.
20-11313-7024	Red Plastic Price Tag Molding	\$8.96 / ft.
11-12104-2090	Silver Metal Price Tag Molding (Specify Door Width)	\$47.44
11-12104-3090	Gold Metal Price Tag Molding (Specify Door Width)	\$47.44
11-12104-6090	Black Metal Price Tag Molding (Specify Door Width)	\$47.44

Page 63 PRODUCT STOPS

ITEM NUMBER	DESCRIPTION	PRICE
85-10763-1001	Front or Rear Entry 23" White	\$12.68
85-10763-1002	Front or Rear Entry 24" White	\$12.68
85-10763-1003	Front or Rear Entry 26" White	\$12.68
85-10763-1004	Front or Rear Entry 28" White	\$12.68
85-10763-1005	Front or Rear Entry 30" White	\$12.68
85-10763-2001	Front or Rear Entry 23" Black	\$12.68
85-10763-2002	Front or Rear Entry 24" Black	\$12.68
85-10763-2003	Front or Rear Entry 26" Black	\$12.68
85-10763-2004	Front or Rear Entry 28" Black	\$12.68
85-10763-2005	Front or Rear Entry 30" Black	\$12.68
85-10823-001	Side Product Stops Rear and Front Entry 24" Silver	\$7.63
85-10823-002	Side Product Stops Rear and Front Entry 27" Silver	\$7.63
85-10823-1001	Side Product Stops Rear and Front Entry 24" White	\$7.63
85-10823-1002	Side Product Stops Rear and Front Entry 27" White	\$7.63
85-10823-2001	Side Product Stops Rear and Front Entry 24" Black	\$7.63
85-18023-2002	Side Product Stops Rear and Front Entry 27" Black	\$7.63
80-10828-001	Side Product Stops Rear and Front Entry 24" Silver	\$7.63

GLASS DOORS & SHELVING

PAGE 63 **PRODUCT STOPS, CONT'D.**

ITEM NUMBER	DESCRIPTION	PRICE
80-10828-0002	Side Product Stops Rear and Front Entry 27" Silver	\$7.63
80-10828-1001	Side Product Stops Rear and Front Entry 24" White	\$7.63
80-10828-1002	Side Product Stops Rear and Front Entry 27" White	\$7.63
80-10828-2001	Side Product Stops Rear and Front Entry 24" Black	\$7.63
80-10828-2002	Side Product Stops Rear and Front Entry 27" Black	\$7.63
11-12092-001	Wall Mount Bracket 1984 to Present	\$42.25
11-11524-0001	Square Post Retaining Bracket 1984 to Present 2" Silver	\$18.43
11-11524-0002	Square Post Retaining Bracket 1984 to Present 2" Black	\$18.43
11-11524-0003	Square Post Retaining Bracket 1984 to Present 3" White	\$18.43

Page 64 **GRAVITY FLOW SHELF**

ITEM NUMBER	DESCRIPTION	PRICE
85-183184	Shelf 24" White	CALL
85-183184	Shelf 42" Black	CALL
80-13182-0000	Merchansidser Shelf 48" to 72" White	CALL
80-13182-0000	Merchansidser Shelf 48" to 72" Black	CALL
80-13603-1001	Gravity Flow Lane Dividers, Single Hook 24" White	\$13.50
80-13603-2201	Gravity Flow Lane Dividers, Single Hook 24" Black	\$13.50
80-13603-1002	Gravity Flow Lane Dividers, Single Hook 27" White	\$14.07
80-13603-2002	Gravity Flow Lane Dividers, Single Hook 27" Black	\$14.07
80-13603-1003	Gravity Flow Lane Dividers, Single Hook 36" White	\$14.95
80-13603-2003	Gravity Flow Lane Dividers, Single Hook 36" Black	\$14.95
80-13603-1007	Gravity Flow Lane Dividers, Single Hook 42" White	\$15.73
80-13603-2007	Gravity Flow Lane Dividers, Single Hook 42" Black	\$15.73
80-13603-1004	Gravity Flow Lane Dividers, Single Hook 48" White	\$14.95
80-13603-2004	Gravity Flow Lane Dividers, Single Hook 48" Black	\$14.95

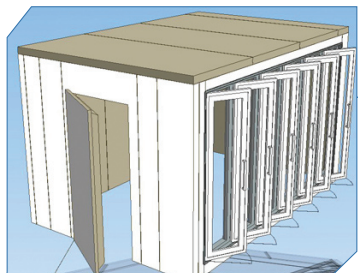
GLASS DOORS & SHELVING

PAGE 64 **GRAVITY FLOW SHELF, CONT'D.**

ITEM NUMBER	DESCRIPTION	PRICE
80-13603-1005	Gravity Flow Lane Dividers, Single Hook 60" White	\$15.13
80-13603-2005	Gravity Flow Lane Dividers, Single Hook 60" Black	\$15.13
80-13603-1006	Gravity Flow Lane Dividers, Single Hook 72" White	\$15.13
80-13603-2006	Gravity Flow Lane Dividers, Single Hook 72" Black	\$15.13
80-13055-1001	Gravity Flow Product Stops Front/Side Left, White	\$8.99
80-13055-1002	Gravity Flow Product Stops Front/Side Right, White	\$8.99
80-13055-2001	Gravity Flow Product Stops Front/Side Left, Black	\$8.99
80-13055-2002	Gravity Flow Product Stops Front/Side Right, Black	\$8.99
80-130601-1009	Gravity Flow Front Milk Stops 2 1/4" White	\$23.93
80-130601-1010	Gravity Flow Front Milk Stops 3 1/4" White	\$26.92

Superior Quality. Unsurpassed Service. Energy Efficient.

Since its founding in 1947, KYSOR Panel Systems has been recognized as an expert in the development of innovative, reliable panel systems. Our uncompromising design and construction standards ensure superior quality, lasting durability, and long service life. It is because of our attention to detail, the service that we provide, the quality of our products, and our ability to meet deadlines why more customers prefer the KYSOR Panel brand.



Refrigeration Solutions for Supermarkets, Convenience Stores, Food Service Industry, and Refrigerated Warehouses

Kysor Panel Systems cooler/freezer solutions are among the most energy efficient and aesthetically appealing. By using an array of manufacturing, computer and engineering technologies, Kysor builds each cooler, freezer, and display cooler to the customer's exact specifications from simple rectangles to complex-angle configurations.

Features:

- Cam-Lock joining system for fast, accurate on-site assembly
- Sturdy wood or high-density rail with interlocking tongue-and-groove perimeter
- Rigid, metal-clad wall panels in lengths up to 26', and 3-1/2", 4", or 5" thicknesses
- Ceiling-panel spans up to 20', requiring no additional structural support
- Poured-in-place, CFC-free urethane for superior insulation and low operating costs
- Tight-sealing, factory-installed bulb-type compression cooler and freezer gaskets
- Heavy-duty doors and hardware
- Heated sweep gaskets
- Forced circulation system providing evenly distributed, uniform and accurate temperature and humidity control



Controlled Environmental Enclosures for Indoor and Outdoor Applications

Kysor Panel Systems structural environmental enclosures are the ideal choice for temporary or permanent sheltering of sensitive equipment, instruments, and materials where controlling dust, moisture, temperature extremes, humidity levels, lighting conditions, and sound levels are important. Custom-built to customer specifications, these enclosures are engineered for maximum utility, easy assembly, and convenient expansion or relocation.

Features:

- Forced circulation system for evenly distributed, uniform and accurate temperature and humidity control
- Temperature ranges from -34° C (-30° F) to +71° C (160° F)
- Humidity ranges from 10% to 95% RH
- Pre-engineered, heavy duty and insulated, wall panels provide a very tight and thermally efficient barrier
- Prefabricated wall panels shipped complete to the construction site for final assembly
- Single, double, or triple pane viewing windows
- Vapor-proofed and sealed lighting designed to your specifications

Products

■ INSULATED DOORS/ PANELS, REFRIGERATION

WALK-IN COOLERS/FREEZERS

- Supermarkets/Convenience Stores
- Floral
- Foodservice
- Meat, Poultry, Deli, Dairy
- Merchandising/Display
- Reach-in Coolers/Freezers
- Walk-in Cooler/Freezer Combos

INDOOR ENVIRONMENTAL ENCLOSURES

- Air Lock Chambers
- Computer Rooms
- Noise Control
- Photo Processing
- R & D Facilities
- Heat Testing
- Curing Chamber
- Blood Bank
- Cleanrooms

OUTDOOR ENVIRONMENTAL ENCLOSURES

- Utility Substations
- Pump Houses
- Telecommunication Shelters
- Electrical Equipment
- Chemical Storage Shelters
- Chiller House
- HVAC Shelters
- Battery Rooms
- Metering Stations
- Filtration Plants
- Storage Facilities/Warehouses
- Electric Substations
- Controlled Environment Buildings
- Food Processing (USDA) Facilities (coolers and refrigeration units)
- Control Rooms
- Sound Enclosures
- Residential Houses

■ PROJECT MANAGEMENT

■ TURN KEY SERVICES



GOT CERTIFICATIONS? Kysor Panel Systems has it all covered – from Listings, Labels and Approvals to Certifications and Testing. For more information, go to our website or call today!

(800) 633-3426