

Glastender. FEATURE FOCUS

OCTOBER 2009

SPLIT *Personality*



BB60BR-L1-XS(LR)

No, Glastender's New Two Zone Coolers are not having an identity crisis! Instead, they are making customers happy and saving money. Two Zone Coolers allow you to store products at two different temperatures. Your customers will be happy because their wine and beer are served at the proper temperature and you save money by getting one cooler to do the job of two.

Two Zone Coolers are available with 2, 3, or 4 doors with three configurations to choose from: beer and white wine, beer and red wine, white wine and red wine.

[Two Zone Back Bar Cooler Spec Sheet](#)
[Two Zone Narrow Door Cooler Spec Sheet](#)

Expect more *more flexibility*
more features

**Glas
tender.**

5400 North Michigan Road • Saginaw, MI 48604-9780
800.748.0423 • 989.752.4275 • FAX 989.752.4444
www.glastender.com

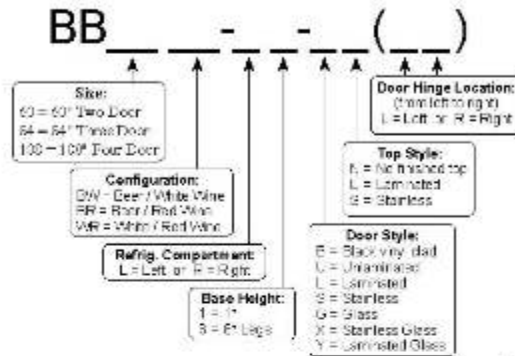
**Glas
tender.**



NSF standard 7 listed for storage of non-hazardous bottled and canned products only

Project: _____	AAJ# _____
Item #: _____ Qty: _____	RR# _____
Model #: _____	

**Two Zone Back Bar Coolers
Two, Three, and Four Door,
Self-Contained**



Standard Features

- Available in three configurations: beer and white wine, beer and red wine, or white wine and red wine
- Available with compressor located left or right. The warmer of the two compartments is always a single door and located opposite the compressor end.
- The two temperature zones are independently controlled
- Self-contained
- All stainless steel interior construction with radius interior corners for easy cleaning
- CFC free foamed-in-place insulation
- Black vinyl-clad steel exterior front and sides
- Automatic defrost timer
- Automatic condensate evaporator
- Leg sockets recessed into base
- 1/2" thick ABS plastic threshold scuff plate
- 180° swinging doors

Specifications

- Electrical**
- 120V, 1 phase, 60 Hz, 6.5 full load amps
 - Dedicated 15 amp circuit is required
 - Includes a 6 foot grounded cord and plug which exits the back of refrigeration compartment
- Refrigeration**
- R134a
 - 1/3 HP
- Operating Range**
- Beer compartment: 34°F to 40°F
 - White wine compartment: 50°F to 55°F
 - Red wine compartment: 60°F to 65°F
- Plumbing**
- Automatic condensate evaporator. No drain connection required
- Shelving**
- Two adjustable coated shelves and one bottom coated rack per door included
 - Part #06006264 wine rack shelf with 7 slots is available as an accessory
- Legs**
- 1-5/8" diameter
 - Stainless steel bullet feet
- Capacity**
- 7 cases long neck beer bottles per door or 66 750ml wine bottles per door
- Materials**
- 22 gauge stainless steel parts include: interior floor, walls, ceiling, front of cabinet, and evaporator housing
 - 22 gauge black vinyl-clad parts include: sides, standard doors, and compressor compartment housing
 - 22 gauge galvanized steel parts include: exterior sub-top and back
 - 16 gauge stainless steel parts include: legs
 - 16 gauge galvanized steel parts include: base and compressor compartment base plate
 - 16 gauge zinc plated CR steel parts include: leg sockets
 - 12 gauge stainless steel parts include: hinges, hinge brackets, and lock brackets

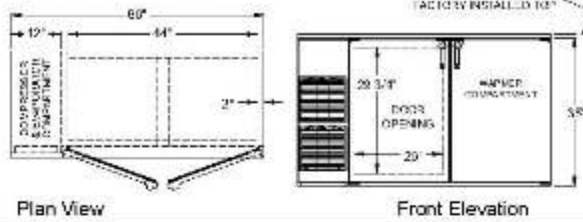
Glastender, Inc. • 5400 N Michigan Rd • Saginaw, MI • 48604-9780 989.752.4275 • 800.748.0423 • Fax 989.752.4444 www.glastender.com	Approval/Notes:
--	-----------------

Specifications subject to change without notice. For current specifications please visit our website.
Printed in USA. 4.36 Rev. 10-26-09

Self-Contained Two Zone Back Bar Coolers

Dimensional Information

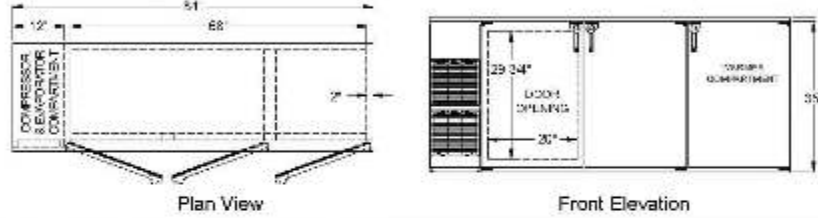
BB60BW, BB60BR, and BB60WR



Plan View

Front Elevation

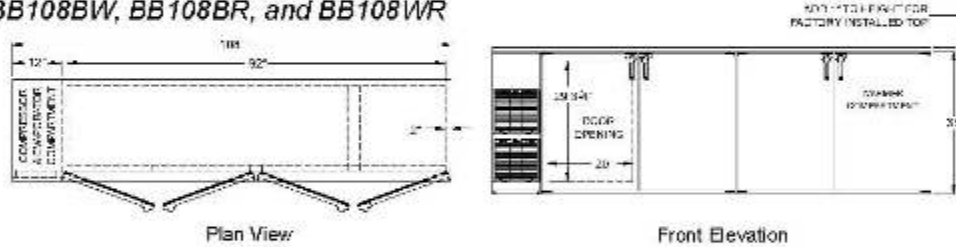
BB84BW, BB84BR, and BB84WR



Plan View

Front Elevation

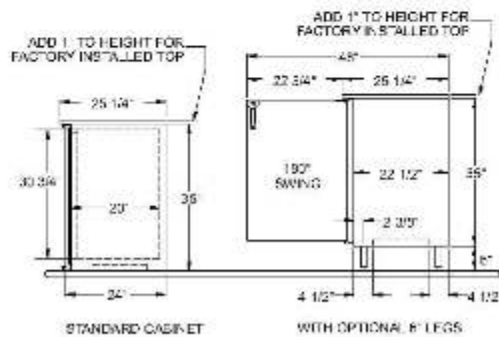
BB108BW, BB108BR, and BB108WR



Plan View

Front Elevation

Side View All Models



STANDARD CABINET

WITH OPTIONAL 8\"/>



06006264 Accessory Wine Rack Shelf for BB. stainless steel with slots for 7 bottles



5400 N. Michigan Rd. • Rogers, MI • 48804-8780
 989.752.4375 • 800.778.0123 • Fax 989.752.4111
www.glas-tender.com

Printed in USA



420 Westdale Avenue
 Westerville, OH 43082

T 614.899.9500
 800.492.7400
 F 614.899.9797

I www.zinkmarketing.com
 E info@zinkmarketing.com

Glas tender.



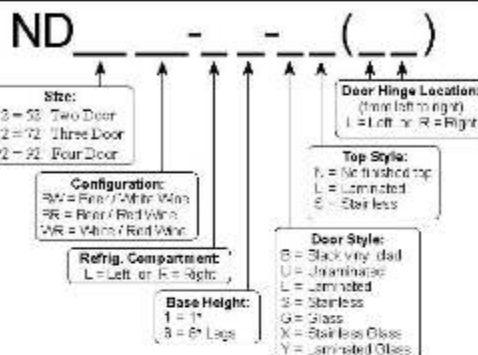
ND52BR-L1-GS(RL)



NSF standard 7 listed for storage of non-hazardous bottled and canned products only

Project: _____	ALA# _____
Item #: _____ Qty: _____	RIS# _____
Model #: _____	

Two Zone Narrow Door Coolers Two, Three, and Four Door, Self-Contained



Standard Features

- Available in three configurations: beer and white wine, beer and red wine, or white wine and red wine
- Available with compressor located left or right. The warmer of the two compartments is always a single door and located opposite the compressor end.
- The two temperature zones are independently controlled
- Self-contained
- All stainless steel interior construction with radius interior corners for easy cleaning
- CFC free foamed-in-place insulation
- Black vinyl-clad steel exterior front and sides
- Automatic defrost timer
- Automatic condensate evaporator
- Leg sockets recessed into base
- 1/2" thick ABS plastic threshold scuff plate
- 180° swinging doors

Specifications

Electrical

- 120V, 1 phase, 60 Hz, 6.5 full load amps
- Dedicated 15 amp circuit is required
- Includes a 6 foot grounded cord and plug which exits the back of refrigeration compartment

Refrigeration

- R134a
- 1/3 HP

Operating Range

- Beer compartment: 34°F to 40°F
- White wine compartment: 50°F to 55°F
- Red wine compartment: 60°F to 65°F

Finishing

- Automatic condensate evaporator. No drain connection required.

Shelving

- Two adjustable coated shelves and one bottom coated rack per door included
- Part #06006265 wine rack shelf with 5 slots is available as an accessory

Legs

- 1-5/8" diameter
- Stainless steel bullet feet

Capacity

- 5.3 cases long neck beer bottles per door or 60 750ml wine bottles per door

Materials

- 22 gauge stainless steel parts include: interior door, walls, ceiling, front of cabinet, and evaporator housing
- 22 gauge black vinyl-clad parts include: sides, standard doors, and compressor compartment housing
- 22 gauge galvanized steel parts include: exterior sub-top and back
- 16 gauge stainless steel parts include: legs
- 16 gauge galvanized steel parts include: base and compressor compartment base plate
- 16 gauge zinc plated CR steel parts include: leg sockets
- 12 gauge stainless steel parts include: hinges, hinge brackets, and lock brackets

Glastender, Inc. • 5400 N Michigan Rd • Saginaw, MI • 48604-9780
989.752.4275 • 800.748.0423 • Fax 989.752.4444
www.glastender.com

Approval notes:

Specifications subject to change without notice. For current specifications please visit our website.

Printed in USA.

4.37

Rev. 08-26-09

ZINK
FOODSERVICE GROUP

420 Westdale Avenue
Westerville, OH 43082

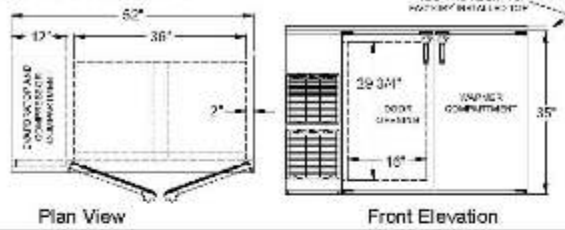
T 614.899.9500
800.492.7400
F 614.899.9797

I www.zinkmarketing.com
E info@zinkmarketing.com

Self-Contained Two Zone Narrow Door Coolers

Dimensional Information

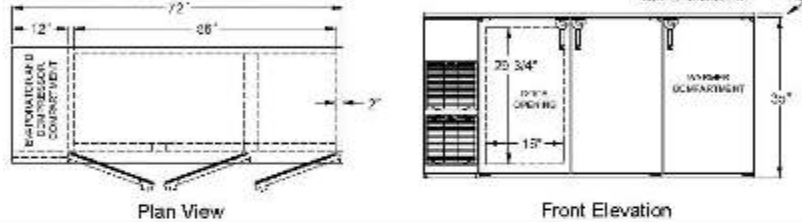
ND52BW, ND52BR, and ND52WR



Plan View

Front Elevation

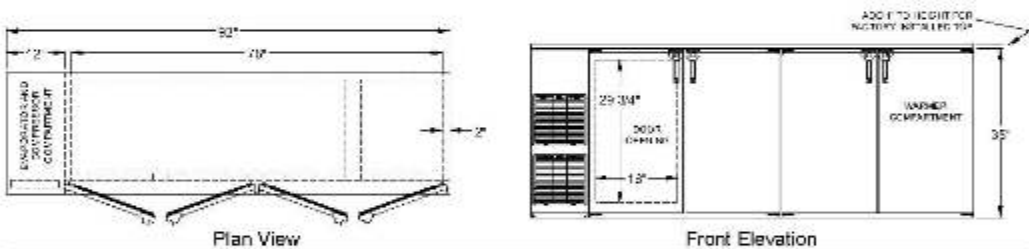
ND72BW, ND72BR, and ND72WR



Plan View

Front Elevation

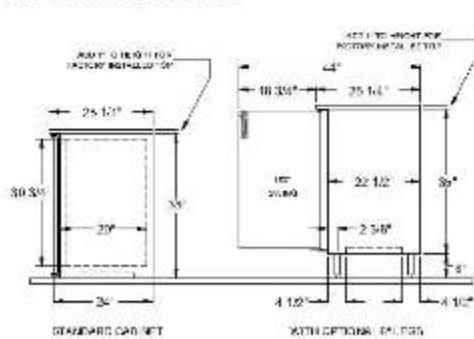
ND92BW, ND92BR, and ND92WR



Plan View

Front Elevation

Side View All Models



STANDARD CABINET

WITH OPTIONAL FULLERS



06006265 Accessory Wine Rack Shelf for ND, stainless steel with slots for 5 bottles



5400 N Michigan Rd • Saginaw, MI • 48604-9780
 989.752.4275 • 800.716.0123 • Fax 989.752.4144
 www.glastender.com

Printed in USA



420 Westdale Avenue
 Westerville, OH 43082

T 614.899.9500
 800.492.7400
 F 614.899.9797

I www.zinkmarketing.com
 E info@zinkmarketing.com