

ELKAY®

**foodservice
products**

Sinks

Dish Tables

Work Tables

Faucets

Stands

Storage

Rethermalizers

Pre-Chillers

Custom Solutions



Price Guide

August 4, 2014



WHY ELKAY?

One Quality Source

From back-of-house stainless equipment to front-of-house architectural millwork, Elkay provides a single source for project solutions.

Custom Product Design

Elkay can design and engineer unique solutions at competitive prices without compromising quality.

Solution-Oriented Service

A professional customer care team, located in the U.S., dedicated to meeting your needs.

National Distribution Network

Multiple locations and large product inventory allows for low lead times with hassle-free service and distribution.

Trusted Certification

Elkay products are third-party tested to comply with NSF and Custom UL standards for product safety and reliability.



Living Values

A solid set of core values has directed Elkay in manufacturing excellence and outstanding service since 1920, our word is our bond.

TABLE OF CONTENTS PAGE

Scullery Sinks - 14" Standard.....	3-6
Scullery Sinks - 12" Standard.....	7-10
Scullery Sinks - Compact Series.....	11-12
Scullery Sinks - Economy Series.....	13-15
Scullery Sinks - Super Economy Series.....	16-18
Utility Sinks.....	19
Mop Sinks.....	20
Dish Tables.....	21-22
Mop and Hand Sinks.....	23
Work Tables - Deluxe.....	24 - 25
Work Tables and Casters - Deluxe.....	26 - 27
Work Tables - Economy.....	28 - 29
Stands.....	30
Storage.....	31 - 33
Pre-Chillers.....	34
Rethermalizers.....	34
Faucets.....	35 - 40
Accessories.....	41
Custom Solutions.....	42
Pricing, Terms & Specifications.....	43

THE ELKAY DIFFERENCE



ELKAY FOODSERVICE — SCULLERY SINKS

14" Standard Series Sinks, Single Compartment

- 16 gauge 304 series stainless steel construction
- Welded construction for consistent metal gauge thickness throughout
- 14" deep tubs with 3/4" coved corners
- 2" divider between tubs
- All drainboards are die stamped for positive drainage
- 9" backsplash with tile ledge for easy installation
- 1 1/2" edge rim design
- 3 1/2" drain with basket strainers included
- 1 3/8" galvanized legs with 1" adjustable feet
- Carries NSF certification for foodservice application

Sink Options

CS-13	Breaker holes (set of 2)	\$32.00
CS-15	Disposer ring weld	\$277.00
CS-17-57	Disposer control bracket, 5" x 7"	\$127.00
CS-17-1117	Disposer control bracket, 11" x 17"	\$173.00
CS-20	Replacement basket strainer, 3 1/2"	\$21.00
CS-21	Legs, 20" high, 300 series S/S (set of 4)	\$289.00
CS-34	H-frame double leg, 1-5/8", 16 ga. galvanized, with adj. high-impact plastic foot	\$187.00
CS-35	H-frame double leg, 1 3/8", 16 ga. 304 S/S, with adj. S/S foot	\$243.00
CS-40	Flanged foot, adj., S/S (ea)	\$28.00
CS-60	Punch for splash mount faucet (set)	\$32.00
CS-59	Faucet hole modification (fill holes, polish & punch new holes)	\$244.00

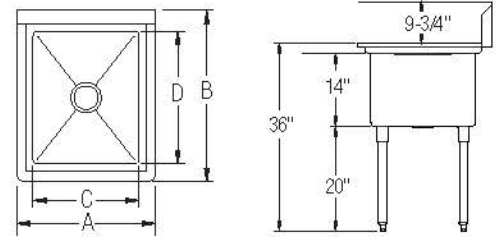


No Drainboard

Model	List Price	DIM. IN INCHES			
		A	B	C	D
14-1C16X20-0X	\$920.00	21	25 3/4	16	20
14-1C18X24-0X	\$1,029.00	23	29 3/4	18	24
14-1C22X22-0X	\$1,044.00	27	27 3/4	22	22
14-1C24X24-0X	\$1,119.00	29	29 3/4	24	24



Optional Accessories See Pg. 41

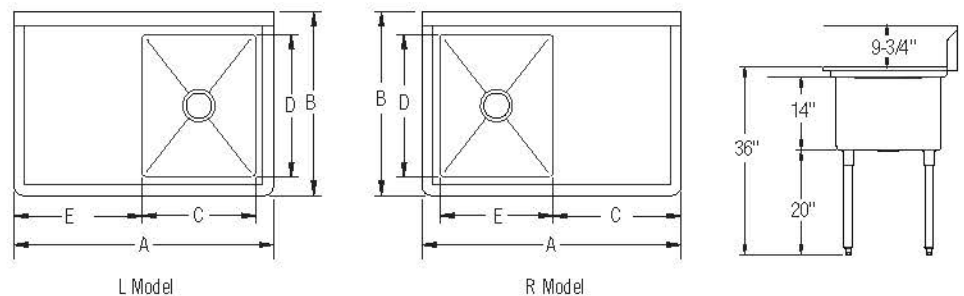


Left or Right Drainboard

Model	List Price	DIM. IN INCHES				
		A	B	C	D	E
14-1C16X20-L-18X	\$1,151.00	36 1/2	25 3/4	16	20	18
14-1C18X24-L-18X	\$1,287.00	38 1/2	29 3/4	18	24	18
14-1C16X20-R-18X	\$1,151.00	36 1/2	25 3/4	16	20	18
14-1C18X24-R-18X	\$1,287.00	38 1/2	29 3/4	18	24	18



Optional Accessories See Pg. 41



ELKAY FOODSERVICE — SCULLERY SINKS

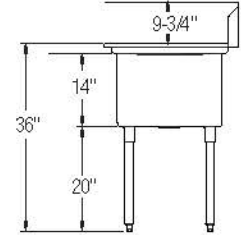
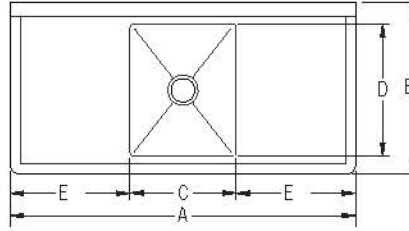
14" Standard Series Scullery Sinks, Single Compartment (cont.)

Left and Right Drainboards

Model	List Price	DIM. IN INCHES				
		A	B	C	D	E
14-1C16X20-2-18X	\$1,321.00	52	25¾	16	20	18



Optional Accessories See Pg. 41



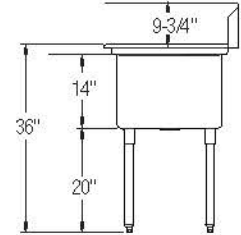
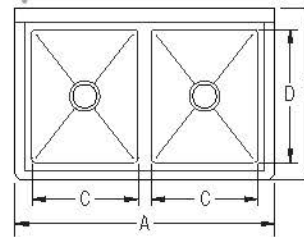
14" Standard Series Scullery Sinks, Double Compartment

No Drainboard

Model	List Price	DIM. IN INCHES			
		A	B	C	D
14-2C16X20-0X	\$1,455.00	39	25¾	16	20
14-2C18X24-0X	\$1,642.00	43	29¾	18	24



Optional Accessories See Pg. 41

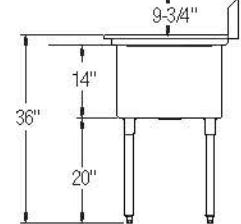
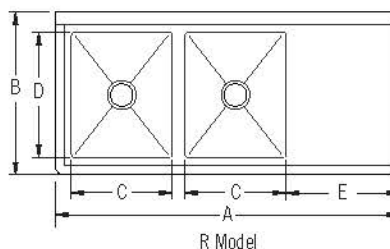
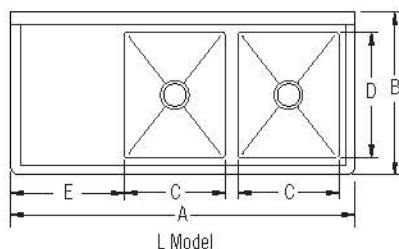


Left or Right Drainboard

Model	List Price	DIM. IN INCHES				
		A	B	C	D	E
14-2C16X20-L-18X	\$1,590.00	54½	25¾	16	20	18
14-2C18X24-L-18X	\$1,892.00	58½	29¾	18	24	18
14-2C24X24-L-24X	\$2,243.00	76½	29¾	24	24	24
14-2C16X20-R-18X	\$1,590.00	54½	25¾	16	20	18
14-2C18X24-R-18X	\$1,892.00	58½	29¾	18	24	18
14-2C24X24-R-24X	\$2,243.00	76½	29¾	24	24	24



Optional Accessories See Pg. 41



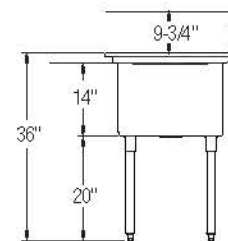
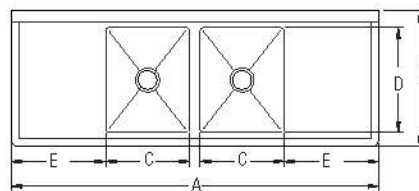
14" Standard Series Scullery Sinks, Double Compartment (cont.)

Left and Right Drainboards

Model	List Price	DIM. IN INCHES				
		A	B	C	D	E
14-2C16X20-2-18X	\$1,795.00	70	25¾	16	20	18
14-2C18X24-2-18X	\$2,126.00	74	29¾	18	24	18
14-2C24X24-2-24X	\$2,381.00	98	29¾	24	24	24



Optional Accessories See Pg. 41



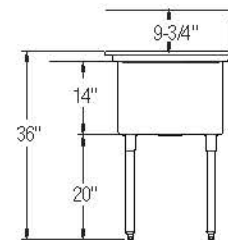
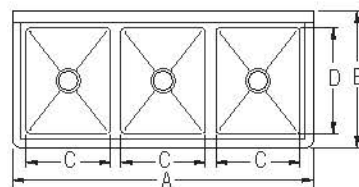
14" Standard Series Scullery Sinks, Triple Compartment

No Drainboard

Model	List Price	DIM. IN INCHES			
		A	B	C	D
14-3C16X20-0X	\$1,920.00	57	25¾	16	20
14-3C18X24-0X	\$2,300.00	63	29¾	18	24
*14-3C24X24-0X	\$2,733.00	81	29¾	24	24



Optional Accessories See Pg. 41

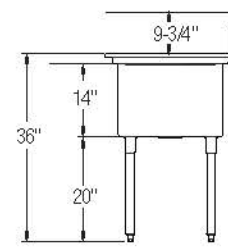
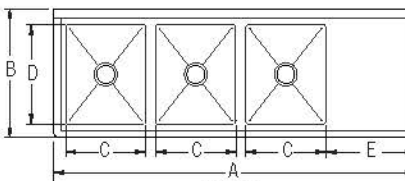
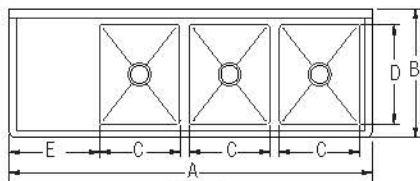


Left or Right Drainboard

Model	List Price	DIM. IN INCHES				
		A	B	C	D	E
14-3C16X20-L-18X	\$2,130.00	72½	25¾	16	20	18
14-3C18X24-L-18X	\$2,397.00	78½	29¾	18	24	18
14-3C18X24-L-24X	\$2,526.00	84½	29¾	18	24	24
*14-3C24X24-L-24X	\$3,065.00	102½	29¾	24	24	24
14-3C16X20-R-18X	\$2,130.00	72½	25¾	16	20	18
14-3C18X24-R-18X	\$2,397.00	78½	29¾	18	24	18
14-3C18X24-R-24X	\$2,526.00	84½	29¾	18	24	24
*14-3C24X24-R-24X	\$3,065.00	102½	29¾	24	24	24



Optional Accessories See Pg. 41



*Has two sets of faucet holes — requires two faucets.

ELKAY FOODSERVICE — SCULLERY SINKS

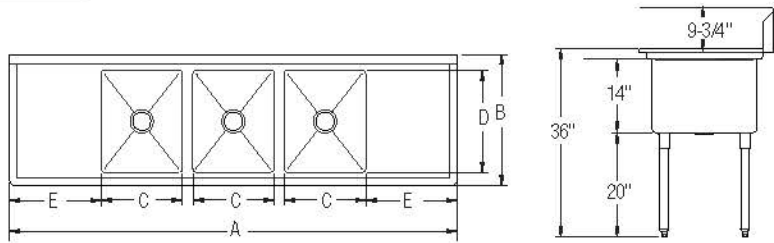
14" Standard Series Scullery Sinks, Triple Compartment

Left and Right Drainboards Optional Accessories See Pg. 41

Model	List Price	DIM. IN INCHES				
		A	B	C	D	E
14-3C16X20-2-18X	\$2,278.00	88	25¾	16	20	18
14-3C16X20-2-24X	\$2,511.00	100	25¾	16	20	24
14-3C18X24-2-18X	\$2,532.00	104	25¾	20	20	20
14-3C18X24-2-24X	\$2,757.00	94	29¾	18	24	18
14-3C20X20-2-20X	\$2,532.00	106	29¾	18	24	24
*14-3C24X24-2-24X	\$3,226.00	124	29¾	24	24	24



*Has two sets of faucet holes — requires two faucets.



UPGRADE YOUR LEGS & FEET!

- CS-21** Stainless steel legs with adjustable feet (set of 4) **\$289.00**
- CS-34** H-frame double leg, 16 gauge galvanized with adjustable plastic feet (each) **\$187.00**
- CS-35** H-frame double leg, 16 gauge stainless steel with adjustable stainless steel feet (each) **\$243.00**



12" Standard Series Scullery Sinks, Single Compartment

- 16 gauge 304 series stainless steel
- Welded construction for consistent metal gauge thickness throughout
- 12" deep tubs with 3/4" coved corners
- 2" divider between each tub
- All drainboards are die stamped for positive drainage
- 10" backsplash with tile ledge for easy installation
- 1 1/2" edge rim design
- 3 1/2" drain with basket strainers included
- 1 3/8" galvanized legs with 1" adjustable feet
- Carries NSF certification for foodservice application

Sink Options

CS-13	Breaker holes (set of 2)	\$32.00
CS-15	Disposer ring weld	\$277.00
CS-17-57	Disposer control bracket, 5" x 7"	\$127.00
CS-17-1117	Disposer control bracket, 11" x 17"	\$173.00
CS-20	Replacement basket strainer, 3 1/2"	\$21.00
CS-21	Legs, 20" high, 300 series S/S (set of 4)	\$289.00
CS-34	H-frame double leg, 1-5/8", 16 ga. galvanized, with adj. high-impact plastic foot	\$187.00
CS-35	H-frame double leg, 1 3/4", 16 ga. 304 S/S, with adj. S/S foot	\$243.00
CS-40	Flanged foot, adj., S/S (ea)	\$28.00
CS-60	Punch for splash mount faucet (set)	\$32.00
CS-59	Faucet hole modification (fill holes, polish & punch new holes)	\$244.00



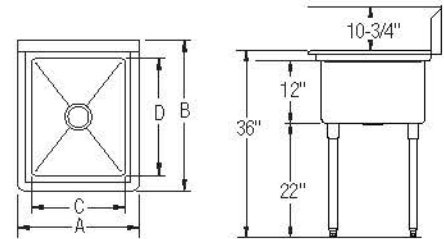
No Drainboard

Model	List Price	DIM. IN INCHES			
		A	B	C	D
1C18X18-0X	\$782.00	23	23 3/4	18	18
1C18X24-0X	\$884.00	23	29 3/4	18	24
1C24X24-0X	\$1,004.00	29	29 3/4	24	24



1C18X24-0X

Optional Accessories See Pg. 41



Left or Right Drainboard

Model	List Price	DIM. IN INCHES				
		A	B	C	D	E
1C18X18-L-18X	\$987.00	38 1/2	23 3/4	18	18	18
1C18X24-L-18X	\$1,118.00	38 1/2	29 3/4	18	24	18
1C18X24-L-24X	\$1,199.00	44 1/2	29 3/4	18	24	24
1C24X24-L-24X	\$1,306.00	50 1/2	29 3/4	24	24	24
1C18X18-R-18X	\$987.00	38 1/2	23 3/4	18	18	18
1C18X24-R-18X	\$1,118.00	38 1/2	29 3/4	18	24	18
1C18X24-R-24X	\$1,199.00	44 1/2	29 3/4	18	24	24
1C24X24-R-24X	\$1,306.00	50 1/2	29 3/4	24	24	24

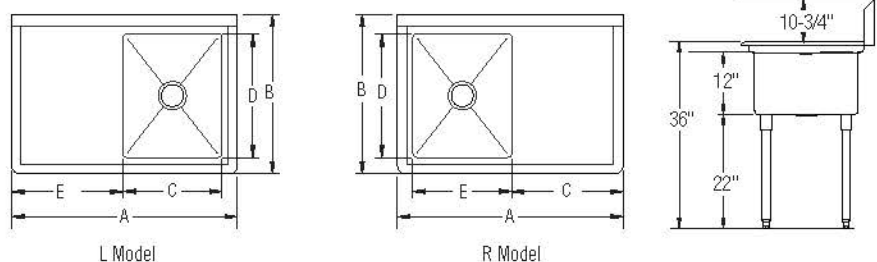


1C18X24-L-18X



1C18X24-R-18X

Optional Accessories See Pg. 41



ELKAY FOODSERVICE — SCULLERY SINKS

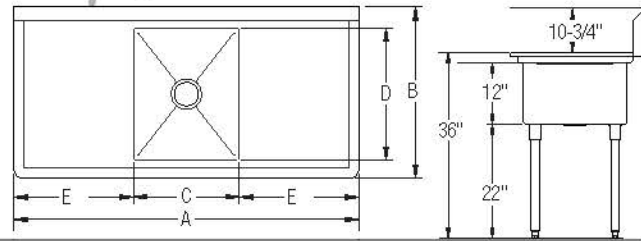
12" Standard Series Scullery Sinks, Single Compartment

Left and Right Drainboards

Model	List Price	DIM. IN INCHES				
		A	B	C	D	E
1C18X18-2-18X	\$1,189.00	54	23 ³ / ₄	18	18	18
1C18X24-2-18X	\$1,357.00	54	29 ³ / ₄	18	24	18
1C18X24-2-24X	\$1,391.00	66	29 ³ / ₄	18	24	24
1C24X24-2-24X	\$1,629.00	72	29 ³ / ₄	24	24	24



Optional Accessories See Pg. 41



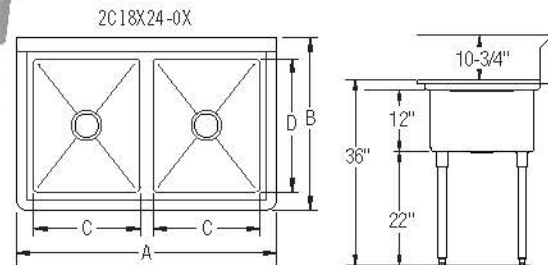
12" Standard Series Scullery Sinks, Double Compartment

No Drainboard

Model	List Price	DIM. IN INCHES			
		A	B	C	D
2C18X18-0X	\$1,273.00	43	23 ³ / ₄	18	18
2C18X24-0X	\$1,435.00	43	29 ³ / ₄	18	24
2C24X24-0X	\$1,704.00	55	29 ³ / ₄	24	24



Optional Accessories See Pg. 41



12" Standard Series Scullery Sinks, Double Compartment

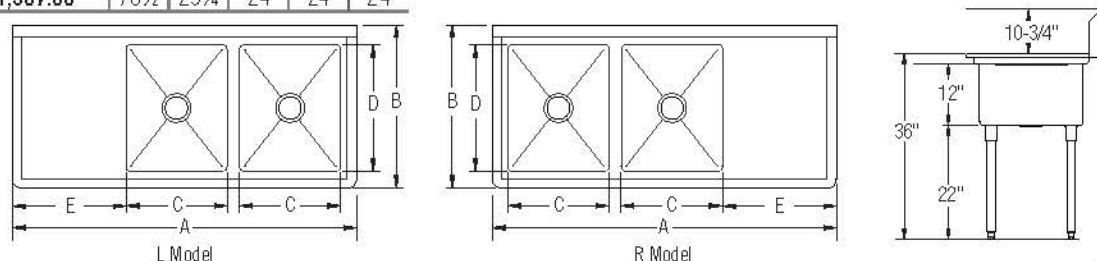
Left or Right Drainboard

Model	List Price	DIM. IN INCHES				
		A	B	C	D	E
2C18X18-L-18X	\$1,457.00	58 ¹ / ₂	23 ³ / ₄	18	18	18
2C18X18-L-24X	\$1,523.00	64 ¹ / ₂	23 ³ / ₄	18	18	24
2C18X24-L-18X	\$1,665.00	58 ¹ / ₂	29 ³ / ₄	18	24	18
2C18X24-L-24X	\$1,746.00	64 ¹ / ₂	29 ³ / ₄	18	24	24
2C24X24-L-24X	\$1,907.00	76 ¹ / ₂	29 ³ / ₄	24	24	24

2C18X18-R-18X	\$1,457.00	58 ¹ / ₂	23 ³ / ₄	18	18	18
2C18X18-R-24X	\$1,523.00	64 ¹ / ₂	23 ³ / ₄	18	18	24
2C18X24-R-18X	\$1,665.00	58 ¹ / ₂	29 ³ / ₄	18	24	18
2C18X24-R-24X	\$1,746.00	64 ¹ / ₂	29 ³ / ₄	18	24	24
2C24X24-R-24X	\$1,907.00	76 ¹ / ₂	29 ³ / ₄	24	24	24



Optional Accessories See Pg. 41



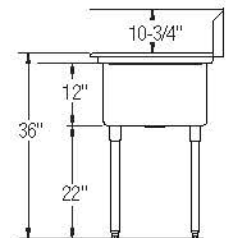
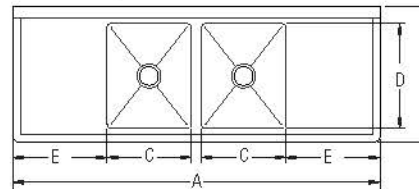
12" Standard Series Scullery Sinks, Double Compartment, (cont.)

Left and Right Drainboards

Model	List Price	DIM. IN INCHES				
		A	B	C	D	E
2C18X18-2-18X	\$1,654.00	74	23 $\frac{3}{4}$	18	18	18
2C18X18-2-24X	\$1,786.00	86	23 $\frac{3}{4}$	18	18	24
2C18X24-2-18X	\$1,876.00	74	29 $\frac{3}{4}$	18	24	18
2C18X24-2-24X	\$1,939.00	86	29 $\frac{3}{4}$	18	24	24
2C24X24-2-24X	\$2,197.00	98	29 $\frac{3}{4}$	24	24	24



Optional Accessories See Pg. 41



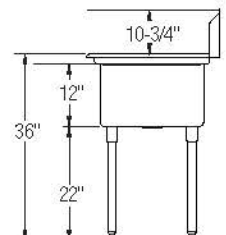
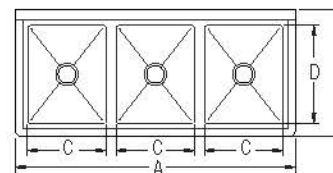
12" Standard Series Scullery Sinks, Triple Compartment

No Drainboard

Model	List Price	DIM. IN INCHES			
		A	B	C	D
3C18X18-0X	\$1,758.00	63	23 $\frac{3}{4}$	18	18
3C18X24-0X	\$1,997.00	63	29 $\frac{3}{4}$	18	24
*3C24X24-0X	\$2,285.00	81	29 $\frac{3}{4}$	24	24



Optional Accessories See Pg. 41



12" Standard Series Scullery Sinks, Triple Compartment

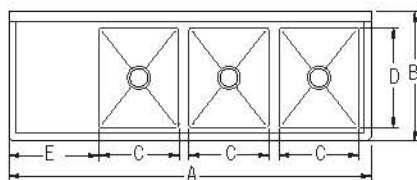
Left or Right Drainboard

Model	List Price	DIM. IN INCHES				
		A	B	C	D	E
3C18X18-L-18X	\$1,957.00	78 $\frac{1}{2}$	23 $\frac{3}{4}$	18	18	18
3C18X24-L-18X	\$2,223.00	78 $\frac{1}{2}$	29 $\frac{3}{4}$	18	24	18
3C18X24-L-24X	\$2,245.00	84 $\frac{1}{2}$	29 $\frac{3}{4}$	18	24	24
*3C24X24-L-24X	\$2,577.00	102 $\frac{1}{2}$	29 $\frac{3}{4}$	24	24	24
3C18X18-R-18X	\$1,957.00	78 $\frac{1}{2}$	23 $\frac{3}{4}$	18	18	18
3C18X24-R-18X	\$2,223.00	78 $\frac{1}{2}$	29 $\frac{3}{4}$	18	24	18
3C18X24-R-24X	\$2,245.00	84 $\frac{1}{2}$	29 $\frac{3}{4}$	18	24	24
*3C24X24-R-24X	\$2,577.00	102 $\frac{1}{2}$	29 $\frac{3}{4}$	24	24	24

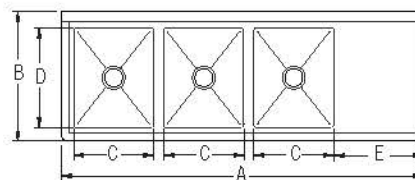
Optional Accessories See Pg. 41



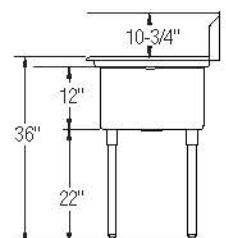
*Has two sets of faucet holes — requires two faucets.



L Model



R Model



ELKAY FOODSERVICE — SCULLERY SINKS

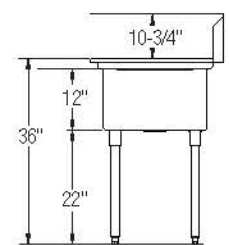
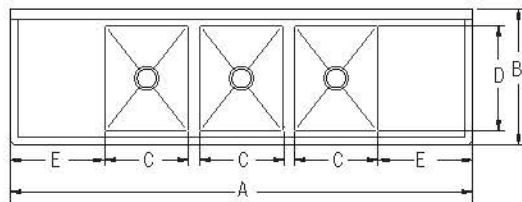
12" Standard Series Scullery Sinks, Triple Compartment

Left and Right Drainboards Optional Accessories See Pg. 41

Model	List Price	DIM. IN INCHES				
		A	B	C	D	E
3C16X20-2-18X	\$2,154.00	88	25 ³ / ₄	16	20	18
3C18X18-2-18X	\$2,172.00	94	23 ³ / ₄	18	18	18
3C18X18-2-24X	\$2,183.00	106	23 ³ / ₄	18	18	24
3C18X24-2-18X	\$2,353.00	94	29 ³ / ₄	18	24	18
3C18X24-2-24X	\$2,498.00	106	29 ³ / ₄	18	24	24
3C20X28-2-20X	\$2,860.00	104	33 ³ / ₄	20	28	20
3C20X28-2-24X	\$2,976.00	112	33 ³ / ₄	20	28	24
*3C24X24-2-24X	\$2,893.00	124	29 ³ / ₄	24	24	24



*Has two sets of faucet holes — requires two faucets.



Recommended Pre-rinse Faucets

- ♦ 8" centerset, wall mount

		LOW FLOW MODELS (1.2 GPM)	
LK943C	\$522.00	LK943LC	\$507.00
LK943AF08C	\$659.00	LK943AF08LC	\$640.00
LK943AF10C	\$678.00	LK943AF10LC	\$658.00
LK943AF12C	\$698.00	LK943AF12LC	\$698.00
LK943AF14C	\$718.00	LK943AF14LC	\$718.00
LK960AF08C	\$746.00	LK960AF08LC	\$746.00
LK960AF10C	\$764.00	LK960AF10LC	\$764.00
LK960AF12C	\$784.00	LK960AF12LC	\$784.00
LK960AF14C	\$804.00	LK960AF14LC	\$804.00



For detail specifications visit elkay.com/faucets



UPGRADE YOUR LEGS & FEET!

CS-21	Stainless steel legs with adjustable feet (set of 4)	\$289.00
CS-34	H-frame double leg, 16 gauge galvanized with adjustable plastic feet (each)	\$187.00
CS-35	H-frame double leg, 16 gauge stainless steel with adjustable stainless steel feet (each)	\$243.00

10" Compact Series Scullery Sinks, Triple Compartment



- 16 gauge 304 series stainless steel
- Welded construction for consistent metal gauge thickness throughout
- 10" deep tubs with 3/4" coved corners
- 2" divider between each tub
- All drainboards are die stamped for positive drainage
- 9" backsplash with tile ledge for easy installation
- 1 1/2" edge rim design
- 3 1/2" drain with basket strainers included
- 1 3/8" galvanized legs with 1" adjustable feet
- Carries NSF certification for foodservice application

Sink Options

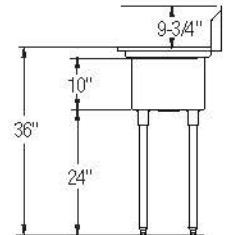
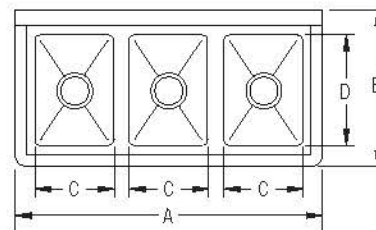
CS-13	Breaker holes (set of 2)	\$32.00
CS-15	Disposer ring weld	\$277.00
CS-17-57	Disposer control bracket, 5" x 7"	\$127.00
CS-17-1117	Disposer control bracket, 11" x 17"	\$173.00
CS-20	Replacement basket strainer, 3 1/2"	\$21.00
CS-21	Legs, 20" high, 300 series S/S (set of 4)	\$289.00
CS-34	H-frame double leg, 1-5/8", 16 ga. galvanized, with adj. high-impact plastic foot	\$187.00
CS-35	H-frame double leg, 1 1/8", 16 ga. 304 S/S, with adj. S/S foot	\$243.00
CS-40	Flanged foot, adj., S/S (ea)	\$28.00
CS-60	Punch for splash mount faucet (set)	\$32.00
CS-59	Faucet hole modification (fill holes, polish & punch new holes)	\$244.00

No Drainboard

Model	List Price	DIM. IN INCHES			
		A	B	C	D
3C10X14-0X	\$1,030.00	39	19 3/4	10	14
3C12X16-0X	\$1,177.00	45	21 3/4	12	16



3C10X14-0X



Optional Accessories See Pg. 41

10" Compact Series Scullery Sinks, Triple Compartment

Left or Right Drainboard

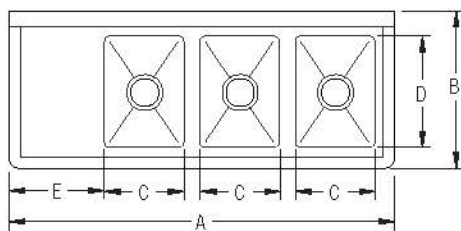
Model	List Price	DIM. IN INCHES				
		A	B	C	D	E
3C10X14-L-12X	\$1,145.00	48 1/2	19 3/4	10	14	12
3C10X14-R-12X	\$1,145.00	48 1/2	19 3/4	10	14	12



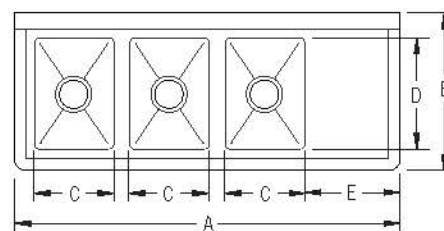
3C10X14-L-12X



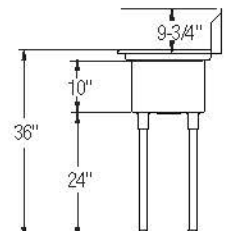
3C10X14-R-12X



L Model



R Model



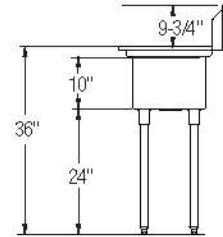
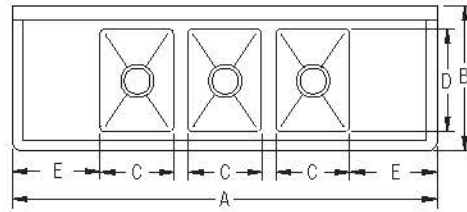
Optional Accessories See Pg. 41

ELKAY FOODSERVICE — SCULLERY SINKS

10" Compact Series Scullery Sinks, Triple Compartment

Left and Right Drainboards Optional Accessories See Pg. 41

Model	List Price	DIM. IN INCHES				
		A	B	C	D	E
3C10X14-2-12X	\$1,263.00	58	19 $\frac{3}{4}$	10	14	12
3C10X14-2-16X	\$1,334.00	66	19 $\frac{3}{4}$	10	14	16
3C12X16-2-12X	\$1,421.00	64	21 $\frac{3}{4}$	12	16	12
3C12X16-2-16X	\$1,509.00	72	21 $\frac{3}{4}$	12	16	16



12" Economy Series Scullery Sinks, Single Compartment

- 18 gauge 304 series stainless steel
- Welded construction for consistent metal gauge thickness throughout
- 12" deep tubs with 3/4" coved corners
- 2" divider between each tub
- All drainboards are die stamped for positive drainage
- 9" backsplash with tile ledge for easy installation
- 1 1/2" edge rim design
- 3 1/2" drain with basket strainers included
- 1 3/8" galvanized legs with 1" adjustable feet
- Carries NSF certification for foodservice application

Sink Options

CS-13	Breaker holes (set of 2)	\$32.00
CS-15	Disposer ring weld	\$277.00
CS-17-57	Disposer control bracket, 5" x 7"	\$127.00
CS-17-1117	Disposer control bracket, 11" x 17"	\$173.00
CS-20	Replacement basket strainer, 3 1/2"	\$21.00
CS-21	Legs, 20" high, 300 series S/S (set of 4)	\$289.00
CS-34	H-frame double leg, 1-5/8", 16 ga. galvanized, with adj. high-impact plastic foot	\$187.00
CS-35	H-frame double leg, 1 3/8", 16 ga. 304 S/S, with adj. S/S foot	\$243.00
CS-40	Flanged foot, adj., S/S (ea)	\$28.00
CS-60	Punch for splash mount faucet (set)	\$32.00
CS-59	Faucet hole modification (fill holes, polish & punch new holes)	\$244.00



12" Economy Series Scullery Sinks, Single Compartment

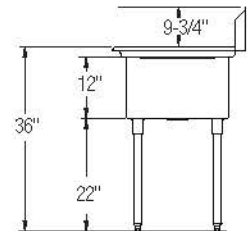
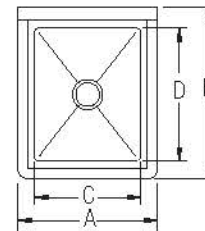
No Drainboard

Model	List Price	DIM. IN INCHES			
		A	B	C	D
E1C16X20-0X	\$634.00	21	25 3/4	16	20
E1C20X20-0X	\$704.00	25	25 3/4	20	20
E1C24X24-0X	\$756.00	29	29 3/4	24	24



E1C16X20-0X

Optional Accessories See Pg. 41



12" Economy Series Scullery Sinks, Single Compartment

Left or Right Drainboard

Model	List Price	DIM. IN INCHES				
		A	B	C	D	E
E1C16X20-L-18X	\$780.00	36 1/2	25 3/4	16	20	18
E1C20X20-L-20X	\$858.00	42 1/2	25 3/4	20	20	20
E1C24X24-L-24X	\$1,009.00	50 1/2	29 3/4	24	24	24
E1C16X20-R-18X	\$780.00	36 1/2	25 3/4	16	20	18
E1C20X20-R-20X	\$858.00	42 1/2	25 3/4	20	20	20
E1C24X24-R-24X	\$1,009.00	50 1/2	29 3/4	24	24	24

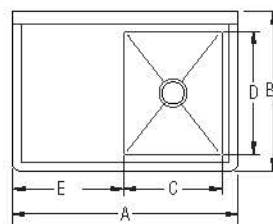


E1C16X20-L-18X

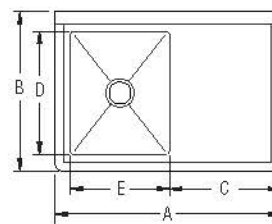


E1C16X20-R-18X

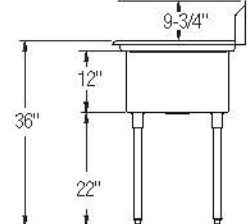
Optional Accessories See Pg. 41



L Model



R Model



ELKAY FOODSERVICE — SCULLERY SINKS

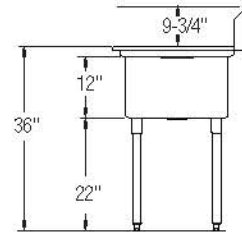
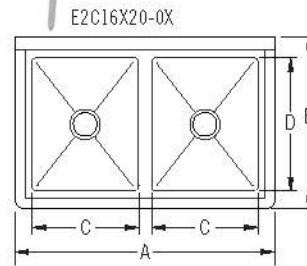
12" Economy Series Scullery Sinks, Double Compartment

No Drainboard

Model	List Price	DIM. IN INCHES			
		A	B	C	D
E2C16X20-0X	\$982.00	39	25¾	16	20
E2C20X20-0X	\$1,067.00	47	25¾	20	20
E2C24X24-0X	\$1,291.00	55	29¾	24	24



Optional Accessories See Pg. 41



12" Economy Series Scullery Sinks, Double Compartment

Left or Right Drainboard

Model	List Price	DIM. IN INCHES				
		A	B	C	D	E
E2C16X20-L-18X	\$1,158.00	54½	25¾	16	20	18
E2C20X20-L-20X	\$1,303.00	64½	25¾	20	20	20
E2C24X24-L-24X	\$1,529.00	76½	29¾	24	24	24
E2C16X20-R-18X	\$1,158.00	54½	25¾	16	20	18
E2C20X20-R-20X	\$1,303.00	64½	25¾	20	20	20
E2C24X24-R-24X	\$1,529.00	76½	29¾	24	24	24

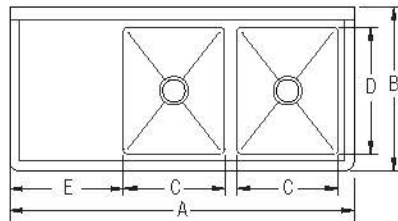


E2C16X20-L-18X

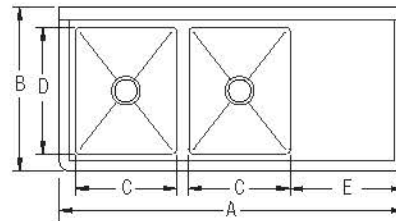


E2C16X20-R-18X

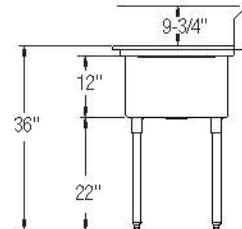
Optional Accessories See Pg. 41



L Model



R Model



12" Economy Series Scullery Sinks, Double Compartment

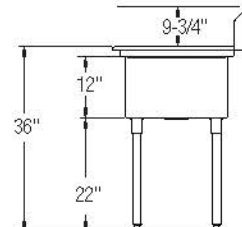
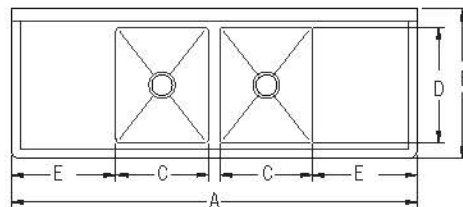
Left and Right Drainboards

Model	List Price	DIM. IN INCHES				
		A	B	C	D	E
E2C16X20-2-18X	\$1,328.00	70	25¾	16	20	18
E2C20X20-2-20X	\$1,490.00	82	25¾	20	20	20
E2C24X24-2-24X	\$1,838.00	98	29¾	24	24	24



E2C16X20-2-18X

Optional Accessories See Pg. 41



12" Economy Series Scullery Sinks, Triple Compartment

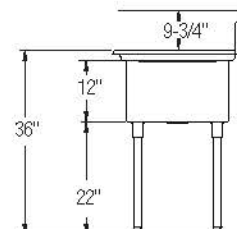
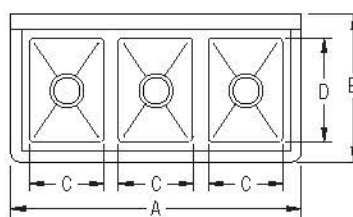
No Drainboard

Model	List Price	DIM. IN INCHES			
		A	B	C	D
E3C16X20-0X	\$1,359.00	57	25¾	16	20
*E3C24X24-0X	\$1,689.00	81	29¾	24	24



E3C16X20-0X

Optional Accessories See Pg. 41



12" Economy Series Scullery Sinks, Triple Compartment

Left or Right Drainboard

Model	List Price	DIM. IN INCHES				
		A	B	C	D	E
E3C16X20-L-18X	\$1,529.00	72½	25¾	16	20	18
E3C20X20-L-20X	\$1,729.00	86½	25¾	20	20	20
*E3C24X24-L-24X	\$1,961.00	102½	29¾	24	24	24
E3C16X20-R-18X	\$1,529.00	72½	25¾	16	20	18
E3C20X20-R-20X	\$1,729.00	86½	25¾	20	20	20
*E3C24X24-R-24X	\$1,961.00	102½	29¾	24	24	24

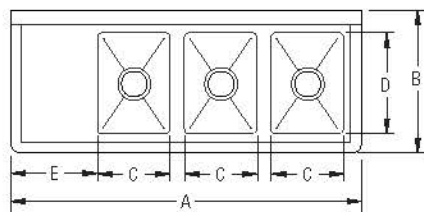


E3C16X20-L-18X

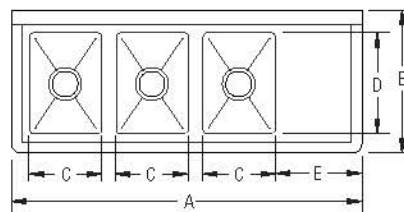
Optional Accessories See Pg. 41



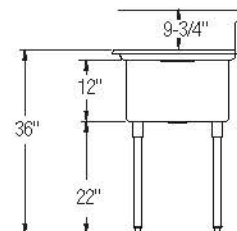
E3C16X20-R-18X



L Model



R Model



12" Economy Series Scullery Sinks, Triple Compartment

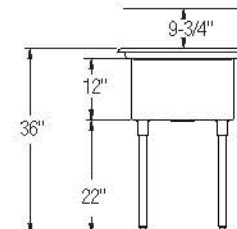
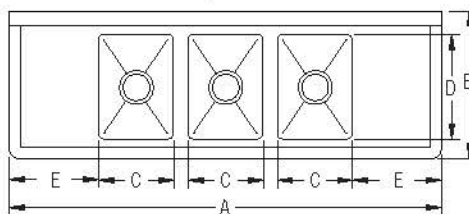
Left and Right Drainboards

Model	List Price	DIM. IN INCHES				
		A	B	C	D	E
E3C16X20-2-18X	\$1,699.00	88	25¾	16	20	18
E3C20X20-2-20X	\$1,955.00	104	25¾	20	20	20
*E3C24X24-2-24X	\$2,134.00	124	29¾	24	24	24



E3C16X20-2-18X

Optional Accessories See Pg. 41



*Has two sets of faucet holes — requires two faucets.

ELKAY FOODSERVICE — SCULLERY SINKS

14" Super Economy Scullery Sinks, Single Compartment

- 18 gauge 304 series stainless steel
- Welded construction for consistent metal gauge thickness throughout
- 14" deep tubs with 3/4" coved corners
- All drainboards are die stamped for positive drainage
- 9" backsplash with tile ledge for easy installation
- 1 1/2" edge rim design
- 3 1/2" drain with basket strainers included
- 1 3/8" galvanized legs with 1" adjustable feet
- Carries NSF certification for foodservice application

Sink Options

CS-13	Breaker holes (set of 2)	\$32.00
CS-15	Disposer ring weld	\$277.00
CS-17-57	Disposer control bracket, 5" x 7"	\$127.00
CS-17-1117	Disposer control bracket, 11" x 17"	\$173.00
CS-20	Replacement basket strainer, 3 1/2"	\$21.00
CS-21	Legs, 20" high, 300 series S/S (set of 4)	\$289.00
CS-34	H-frame double leg, 1-5/8", 16 ga. galvanized, with adj. high-impact plastic foot	\$187.00
CS-35	H-frame double leg, 1 3/8", 16 ga. 304 S/S, with adj. S/S foot	\$243.00
CS-40	Flanged foot, adj., S/S (ea)	\$28.00
CS-60	Punch for splash mount faucet (set)	\$32.00
CS-59	Faucet hole modification (fill holes, polish & punch new holes)	\$244.00



14" Super Economy Scullery Sinks, Single Compartment

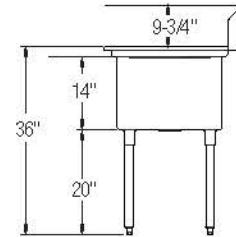
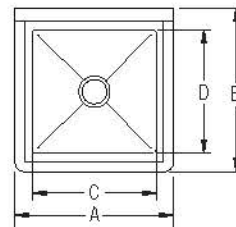
No Drainboard

Model	List Price	DIM. IN INCHES			
		A	B	C	D
S1C18X18-0X	\$858.00	23	23 3/4	18	18
S1C24X24-0X	\$1,044.00	29	29 3/4	24	24



S1C18X18-0X

Optional Accessories See Pg. 41



14" Super Economy Scullery Sinks, Single Compartment

Left or Right Drainboard

Model	List Price	DIM. IN INCHES				
		A	B	C	D	E
S1C18X18-L-18X	\$1,023.00	38 1/2	23 3/4	18	18	18
S1C18X18-R-18X	\$1,023.00	38 1/2	23 3/4	18	18	18

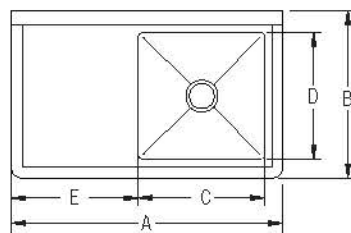


S1C18X18-L-18X

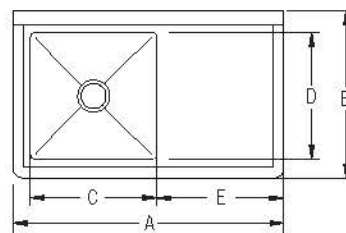


S1C18X18-R-18X

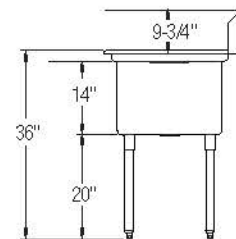
Optional Accessories See Pg. 41



L Model



R Model



14" Super Economy Scullery Sinks, Single Compartment (cont.)

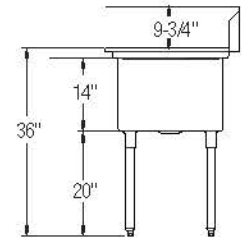
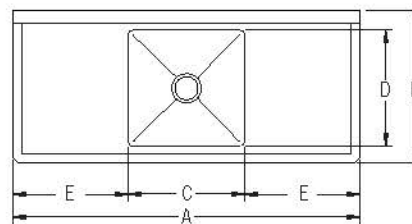
Left and Right Drainboards

Model	List Price	DIM. IN INCHES				
		A	B	C	D	E
S1C18X18-2-18X	\$1,173.00	54	23¾	18	18	18

Optional Accessories See Pg. 41



S1C18X18-2-18X



14" Super Economy Scullery Sinks, Double Compartment

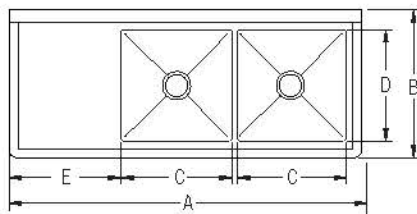
Left or Right Drainboard

Model	List Price	DIM. IN INCHES				
		A	B	C	D	E
S2C18X18-L-18X	\$1,385.00	56½	23¾	18	18	18
S2C18X18-R-18X	\$1,385.00	56½	23¾	18	18	18

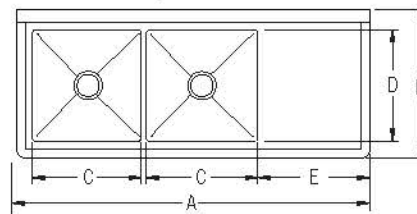
Optional Accessories See Pg. 41



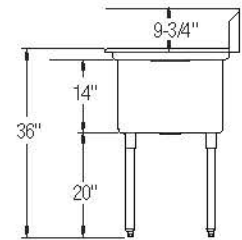
S2C18X18-L-18X



L Model



R Model



14" Super Economy Scullery Sinks, Double Compartment

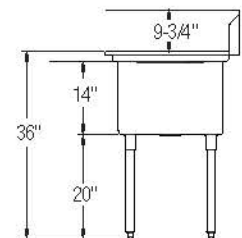
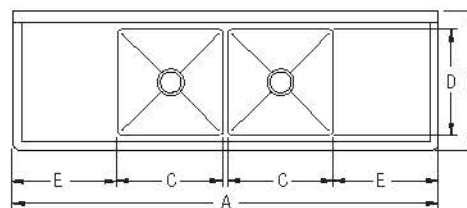
Left and Right Drainboards

Model	List Price	DIM. IN INCHES				
		A	B	C	D	E
S2C18X18-2-18X	\$1,432.00	72	23¾	18	18	18

Optional Accessories See Pg. 41



S2C18X18-2-18X



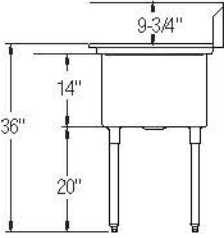
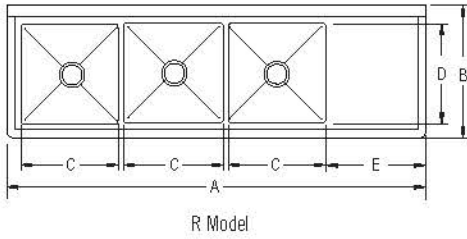
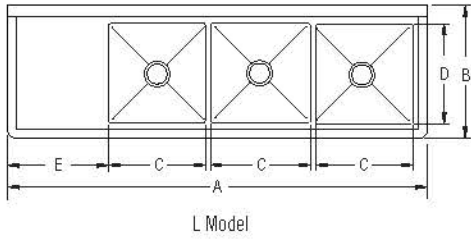
ELKAY FOODSERVICE — SCULLERY SINKS

14" Super Economy Scullery Sinks, Triple Compartment

Left or Right Drainboard

Model	List Price	DIM. IN INCHES				
		A	B	C	D	E
S3C18X18-L-18X	\$1,607.00	74½	23¾	18	18	18
S3C18X18-R-18X	\$1,607.00	74½	23¾	18	18	18

Optional Accessories See Pg. 41



14" Super Economy Scullery Sinks, Triple Compartment

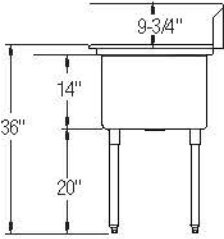
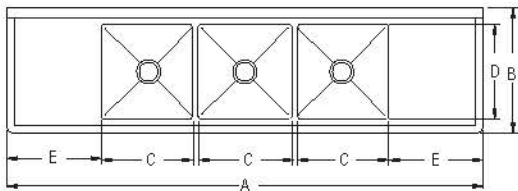
Left and Right Drainboards

Model	List Price	DIM. IN INCHES				
		A	B	C	D	E
S3C18X18-2-18X	\$1,684.00	90	23¾	18	18	18
*S3C24X24-2-24X	\$2,428.00	120	29¾	24	24	24

Optional Accessories See Pg. 41



*Has two sets of faucet holes — requires two faucets.



12" Utility Sinks

- 18 gauge 430 series stainless steel
- Welded construction for consistent metal gauge thickness throughout
- 12" deep tubs with square corners
- 8" backsplash with tile ledge for easy installation
- 1½" edge rim design
- 3½" drain with basket strainers included
- 1⅝" galvanized legs with 1" adjustable feet

Sink Options

CS-13	Breaker holes (set of 2)	\$32.00
CS-15	Disposer ring weld	\$277.00
CS-17-57	Disposer control bracket, 5" x 7"	\$127.00
CS-17-1117	Disposer control bracket, 11" x 17"	\$173.00
CS-20	Replacement basket strainer, 3½"	\$21.00
CS-21	Legs, 20" high, 300 series S/S (set of 4)	\$289.00
CS-34	H-frame double leg, 1-5/8", 16 ga. galvanized, with adj. high-impact plastic foot	\$187.00
CS-35	H-frame double leg, 1⅝", 16 ga. 304 S/S, with adj. S/S foot	\$243.00
CS-40	Flanged foot, adj., S/S (ea)	\$28.00
CS-60	Punch for splash mount faucet (set)	\$32.00
CS-59	Faucet hole modification (fill holes, polish & punch new holes)	\$244.00

12" Utility Sinks

Single Compartment		DIM. IN INCHES			
Model	List Price	A	B	C	D
B1C18X18X	\$641.00	21	21½	18	18
B1C18X21X	\$669.00	21	24½	18	21
B1C24X24X	\$741.00	27	27½	24	24

Optional Accessories See Pg. 41

12" Utility Sinks

Double Compartment		DIM. IN INCHES			
Model	List Price	A	B	C	D
B2C18X21X	\$1,047.00	39	24½	18	21
B2C24X24X	\$1,221.00	51	27½	24	24

Optional Accessories See Pg. 41

12" Utility Sinks

Triple Compartment		DIM. IN INCHES			
Model	List Price	A	B	C	D
B3C12X21X	\$1,242.00	39	24½	12	21
B3C18X21X	\$1,441.00	57	24½	18	21
B3C24X24X	\$1,680.00	75	27½	24	24

Optional Accessories See Pg. 41

ELKAY FOODSERVICE — MOP SINKS

Mop Sinks

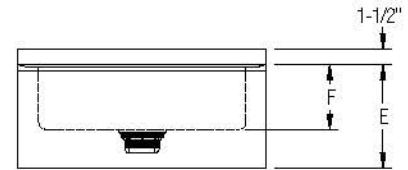
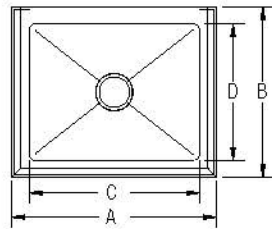


- 16 gauge 304 series stainless steel top and tub
- 18 gauge stainless steel skirt
- Welded construction for consistent metal gauge thickness throughout
- 3½" drain with flat strainers included
- Carries NSF certification for foodservice application

Model	List Price	DIM. IN INCHES					
		A	B	C	D	E	F
FLR-1X	\$816.00	24	20	20	16	10	6
FLR-2X	\$1,452.00	32	24	28	20	10	6
FLR-3X	\$1,260.00	24	20	20	16	16	12
FLR-4X	\$1,531.00	32	24	28	20	16	12



Optional Accessories See Pg. 41



Mop Sink Accessories

LK403 **\$138.00**



- Stainless steel mop holder for FLR mop sinks
- Wall mount
- 3 station

LK402 **\$34.00**

- Black heavy duty rubber hose
- 36" long
- Standard female hose connection on one end



LK404 **\$27.00**

- Stainless steel hose hanger for FLR mop sinks



LKB940C  **\$235.00**

- Utility faucet with 8" centerset
- Wall mount
- Quarter turn ceramic disc cartridge
- Solid brass construction
- Rough chrome finish
- NSF/ANSI 61 Certified



Did you also know about?...

ELKAY FOODSERVICE — PRE-CHILLERS

Maximizes the performance of ice production - Up to 20% more!

(Based on performance of an Elkay ER191 on a Manitowoc SY-1805W in 90°F ambient air, 70-90°F water supply temp., 55-65°F outlet water temp., dispensing 2-4 gallons every 10 minutes.)

Consistent chilled water temperature

- Shortens harvest cycle
- Increases daily ice production
- Manages seasonal fluctuations of water temperatures

Large Reservoir Capacity

- Four gallon storage tank supports large batch process ice machines
- Additional chiller capacity can be used to support drinking water station, carbonated drinks and juice systems

ER191 **\$2,500.00**



ELKAY FOODSERVICE — DISH TABLES

Clean Dish Tables

- 16 gauge 304 series stainless
- Welded construction for consistent metal gauge thickness throughout the bowl
- Sink bowls are 6" deep with 3/4" covered corners (DDT & UDT)
- 10" backsplash (DDT & CDT) and 8" backsplash (UDT) with tile ledge for easy installation
- 1 1/2" edge rim design
- 1 3/8" galvanized legs with 1" adjustable feet
- Carries NSF certification for foodservice application

Sink Options

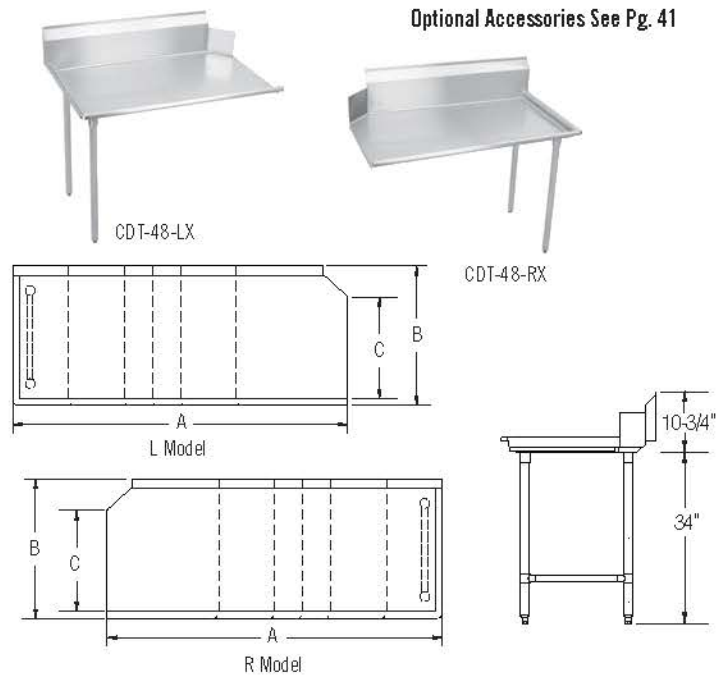
CS-13	Breaker holes (set of 2)	\$32.00
CS-15	Disposer ring weld	\$277.00
CS-17-57	Disposer control bracket, 5" x 7"	\$127.00
CS-17-1117	Disposer control bracket, 11" x 17"	\$173.00
CS-35	H-frame double leg, 1 3/8", 16 ga. 304 S/S, with adj. S/S foot	\$243.00
CS-40	Flanged foot, adj., S/S (ea)	\$28.00



Clean Dish Tables

Left or Right Tables

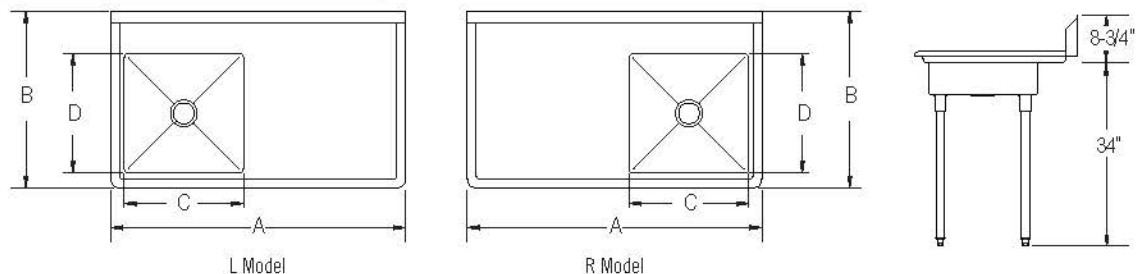
Model	List Price	DIM. IN INCHES		
		A	B	C
CDT-24-LX	\$662.00	24	30	21 3/4
CDT-36-LX	\$764.00	36	30	21 3/4
CDT-48-LX	\$878.00	48	30	21 3/4
CDT-60-LX	\$1,090.00	60	30	21 3/4
CDT-72-LX	\$1,299.00	72	30	21 3/4
CDT-84-LX	\$1,428.00	84	30	21 3/4
CDT-96-LX	\$1,520.00	96	30	21 3/4
CDT-24-RX	\$662.00	24	30	21 3/4
CDT-36-RX	\$764.00	36	30	21 3/4
CDT-48-RX	\$878.00	48	30	21 3/4
CDT-60-RX	\$1,090.00	60	30	21 3/4
CDT-72-RX	\$1,299.00	72	30	21 3/4
CDT-84-RX	\$1,428.00	84	30	21 3/4
CDT-96-RX	\$1,520.00	96	30	21 3/4



Under Counter Dish Tables

Left or Right Tables

Model	List Price	DIM. IN INCHES			
		A	B	C	D
UDT-50-LX	\$1,214.00	50	30	20 3/4	20 3/4
UDT-60-LX	\$1,337.00	60	30	20 3/4	20 3/4
UDT-50-RX	\$1,214.00	50	30	20 3/4	20 3/4
UDT-60-RX	\$1,337.00	60	30	20 3/4	20 3/4



ELKAY FOODSERVICE — DISH TABLES

Soiled Dish Tables

Left or Right Tables

Model	List Price	DIM. IN INCHES			
		A	B	C	D
DDT-36-LX	\$1,342.00	36	30	20¼	20¼
DDT-48-LX	\$1,402.00	48	30	20¼	20¼
DDT-60-LX	\$1,625.00	60	30	20¼	20¼
DDT-72-LX	\$1,807.00	72	30	20¼	20¼
DDT-96-LX	\$2,437.00	96	30	20¼	20¼
DDT-36-RX	\$1,342.00	36	30	20¼	20¼
DDT-48-RX	\$1,402.00	48	30	20¼	20¼
DDT-60-RX	\$1,625.00	60	30	20¼	20¼
DDT-72-RX	\$1,807.00	72	30	20¼	20¼
DDT-96-RX	\$2,437.00	96	30	20¼	20¼

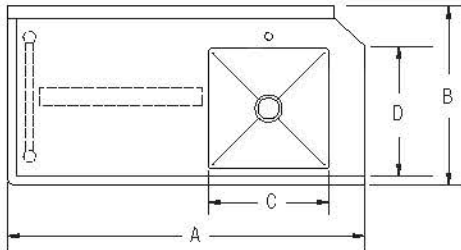
Optional Accessories See Pg. 41



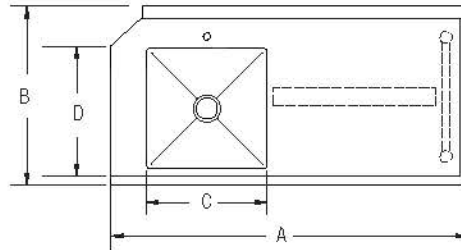
DDT-48-LX



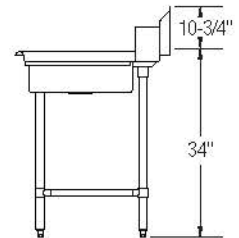
DDT-48-RX



L Model



R Model



UPGRADE YOUR LEGS & FEET!

CS-21	Stainless steel legs with adjustable feet (set of 4)	\$289.00
CS-34	H-frame double leg, 16 gauge galvanized with adjustable plastic feet (each)	\$187.00
CS-35	H-frame double leg, 16 gauge stainless steel with adjustable stainless steel feet (each)	\$243.00

RACK SLIDE WITH BASKET

RSPB-20 \$250.00
RSSB-20 \$425.00

- Compatible with all of our dish tables
- Carries NSF certification for foodservice application
- Tub size: 20" x 20" x 5"

RSPB-20
 18 gauge 300 series stainless steel rack slide with plastic basket

RSSB-20
 18 gauge 300 series stainless steel rack slide with stainless steel basket



RSPB-20



RSSB-20



ELKAY FOODSERVICE — HAND SINKS

Hand Sink and Faucet Packages



- 18 gauge 304 series stainless steel
- Easy to clean and sanitize
- 1½" drain opening
- Strainer and faucet included
- NSF certified

Sink and Faucet Packages

Model	List Price	DIM. IN INCHES			
		A	B	C	D
EHS-14X	\$271.00	14	16½	10	12
EHS-18X	\$274.00	18	14½	14	10
SEHS-17X	\$352.00	17	15	14	10
WITH SIDE SPLASH(ES)					
EHS-18-S-LX	\$407.00	18	14½	14	10
EHS-18-S-RX	\$407.00	18	14½	14	10
EHS-18-SSX	\$504.00	18	14½	14	10
WITH KNEE VALVE					
EHS-18-KVX	\$705.00	18	14½	14	10
WITH PEDESTAL BASE AND FOOT VALVE					
EHS-14-PEDX	\$989.00	14	16½	10	12
EHS-18-PEDX	\$951.00	18	14½	14	10
WITH SOAP AND TOWEL DISPENSER					
EHS-18-STDX	\$896.00	18	14½	14	10
WITH SIDE SPLASH, LEVER WASTE, OVERFLOW AND P-TRAP					
EHS-18-SDX	\$929.00	18	14½	14	10
WITH SOAP AND TOWEL DISPENSER, LEVER WASTE, OVERFLOW AND P-TRAP					
EHS-18-TDX	\$1,018.00	18	14½	14	10
WITH SOAP AND TOWEL DISPENSER, SKIRT AND P-TRAP					
EHS-18-TSX	\$1,243.00	18	14½	14	10



EHS-14X



EHS-18-STDX



EHS-18-SDX



EHS-14-PEDX



EHS-18X



SEHS-17X

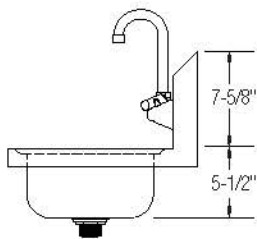
UPGRADE YOUR FAUCET!

Wall Mount, Solid Brass Construction

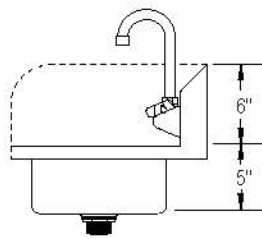


LKB400

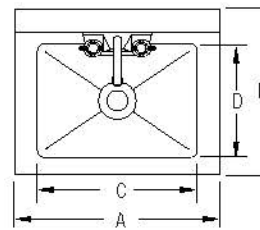
\$176.00



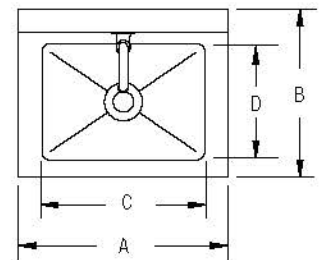
SEHS-17X



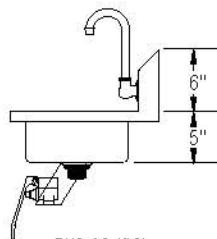
EHS-14X, EHS-18X, EHS-18-S-LX, EHS-18-S-RX, EHS-18-SSX



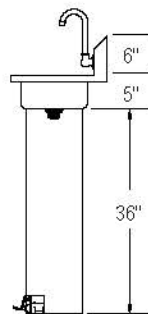
EHS-14X, EHS-18X, EHS-18-S-LX, EHS-18-S-RX, EHS-18-SDX, EHS-18-SSX, SEHS-17X, EHS-18-STDX, EHS-18-TDX, EHS-18-TSX



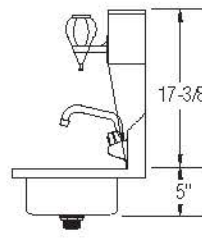
EHS-18-KVX, EHS-14-PEDX, EHS-18-PEDX



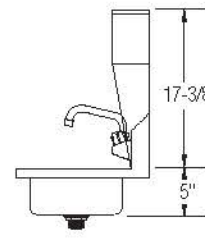
EHS-18-KVX



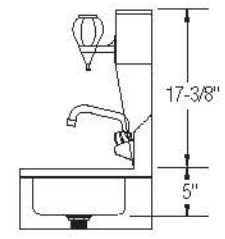
EHS-14-PEDX, EHS-18-PEDX



EHS-18-STDX



EHS-18-TDX



EHS-18-TSX

ELKAY FOODSERVICE — WORK TABLES



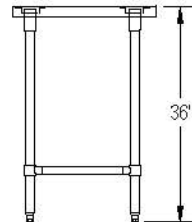
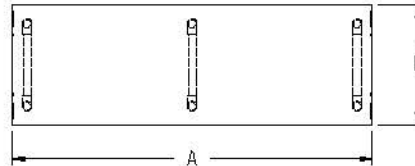
Deluxe Work Table

- 16 gauge 304 series stainless steel
- Two galvanized hat channels per table
- 1 3/8" heavy gauge tubing with fully adjustable 1" feet
- Available with under shelf or cross bracing
- 18 gauge under shelves are welded to adjustable galvanized leg rings that are secured with allen screws, wrench supplied
- Under shelf, cross bracing and legs available in stainless steel (STSX or BSX) or galvanized (STGX or BGX)
- Tables are shipped knocked down
- Work tables larger than 72" have 6 legs
- Backsplash models are 4" with 1" return
- Carries NSF certification for foodservice application

Model	List Price	DIM. IN INCHES	
		A	B
WITH STAINLESS STEEL CROSS BRACING			
WT24X30-STSX	\$728.00	30	24
WT24X36-STSX	\$762.00	36	24
WT24X48-STSX	\$883.00	48	24
WT24X60-STSX	\$1,012.00	60	24
WT24X72-STSX	\$1,149.00	72	24
WT24X84-STSX	\$1,326.00	84	24
WT24X96-STSX	\$1,605.00	96	24
WT24X108-STSX	\$1,653.00	108	24
WT24X120-STSX	\$1,782.00	120	24
WITH GALVANIZED CROSS BRACING			
WT30X30-STGX	\$747.00	30	30
WT30X36-STGX	\$809.00	36	30
WT30X48-STGX	\$949.00	48	30
WT30X60-STGX	\$1,100.00	60	30
WT30X72-STGX	\$1,261.00	72	30
WT30X84-STGX	\$1,456.00	84	30
WT30X96-STGX	\$1,645.00	96	30
WT30X108-STGX	\$1,791.00	108	30
WT30X120-STGX	\$1,991.00	120	30



WT30X72-STSX



Optional Accessories



CT-11-1520S

Drawers

CT-11-1520E \$291.00
\$291.00

Overall size: 15" x 20" x 5"
Polyslide drawer with plastic liner

CT-11-1520P \$346.00

Overall size: 15" x 20" x 5"
Roller bearing drawer with plastic liner

CT-11-1520S \$250.00

Overall size: 15" x 20" x 5"
Roller bearing drawer with 18 gauge 300 series stainless steel liner

CT-11-2020P \$389.00

Overall size: 20" x 20" x 5"
Roller bearing drawer with plastic liner

CT-11-2020S \$434.00

Overall size: 20" x 20" x 5"
Roller bearing drawer with 18 gauge 300 series stainless steel liner



CT-19-4

Casters

CT-19-4 \$125.00
Set of 4 casters, two locking, two non-locking

CT-19-6 \$190.00
Set of 6 casters, two locking, four non-locking

CT-74 \$190.00
Set of 4 casters, two locking, two non-locking

CT-75 \$250.00
Set of 6 casters, two locking, four non-locking

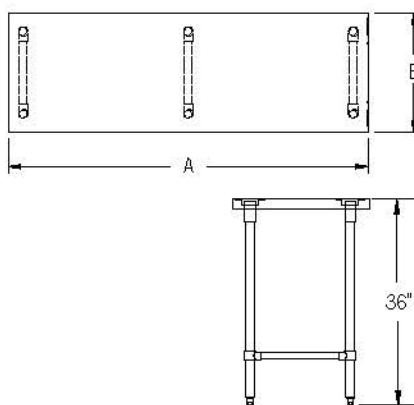
Deluxe Work Table with 4" Backsplash

Model	List Price	DIM. IN INCHES	
		A	B
WITH STAINLESS STEEL CROSS BRACING			
WT24X30-BSX	\$777.00	30	24
WT24X36-BSX	\$840.00	36	24
WT24X48-BSX	\$945.00	48	24
WT24X60-BSX	\$1,082.00	60	24
WT24X72-BSX	\$1,215.00	72	24
WT24X84-BSX	\$1,478.00	84	24
WT24X96-BSX	\$1,629.00	96	24
WT24X108-BSX	\$1,729.00	108	24
WT24X120-BSX	\$1,819.00	120	24
WT30X30-BSX	\$815.00	30	30
WT30X36-BSX	\$881.00	36	30
WT30X48-BSX	\$1,021.00	48	30
WT30X60-BSX	\$1,180.00	60	30
WT30X72-BSX	\$1,274.00	72	30
WT30X84-BSX	\$1,649.00	84	30
WT30X96-BSX	\$1,823.00	96	30
WT30X108-BSX	\$2,014.00	108	30
WT30X120-BSX	\$2,182.00	120	30

WITH GALVANIZED CROSS BRACING			
WT24X30-BGX	\$571.00	30	24
WT24X36-BGX	\$730.00	36	24
WT24X48-BGX	\$747.00	48	24
WT24X60-BGX	\$901.00	60	24
WT24X72-BGX	\$1,016.00	72	24
WT24X84-BGX	\$1,227.00	84	24
WT24X96-BGX	\$1,324.00	96	24
WT24X108-BGX	\$1,559.00	108	24
WT24X120-BGX	\$1,602.00	120	24
WT30X30-BGX	\$618.00	30	30
WT30X36-BGX	\$750.00	36	30
WT30X48-BGX	\$775.00	48	30
WT30X60-BGX	\$996.00	60	30
WT30X72-BGX	\$1,133.00	72	30
WT30X84-BGX	\$1,354.00	84	30
WT30X96-BGX	\$1,466.00	96	30
WT30X108-BGX	\$1,641.00	108	30
WT30X120-BGX	\$1,684.00	120	30



WT30X72-BSX



Optional Accessories



CT-11-1520S

Drawers

CT-11-1520E	\$291.00
\$291.00	
Overall size: 15" x 20" x 5"	
Polyslide drawer with plastic liner	
CT-11-1520P	\$346.00
Overall size: 15" x 20" x 5"	
Roller bearing drawer with plastic liner	
CT-11-1520S	\$250.00
Overall size: 15" x 20" x 5"	
Roller bearing drawer with 18 gauge 300 series stainless steel liner	
CT-11-2020P	\$389.00
Overall size: 20" x 20" x 5"	
Roller bearing drawer with plastic liner	
CT-11-2020S	\$434.00
Overall size: 20" x 20" x 5"	
Roller bearing drawer with 18 gauge 300 series stainless steel liner	



CT-19-4

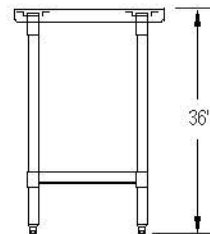
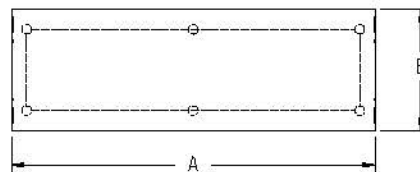
Casters

CT-19-4	\$125.00
Set of 4 casters, two locking, two non-locking	
CT-19-6	\$190.00
Set of 6 casters, two locking, four non-locking	
CT-74	\$190.00
Set of 4 casters, two locking, two non-locking	
CT-75	\$250.00
Set of 6 casters, two locking, four non-locking	

ELKAY FOODSERVICE — WORK TABLES AND CASTERS

Deluxe Work Table

Model	List Price	DIM. IN INCHES	
		A	B
WITH STAINLESS STEEL UNDER SHELF			
WT24S30-STSX	\$728.00	30	24
WT24S36-STSX	\$762.00	36	24
WT24S48-STSX	\$883.00	48	24
WT24S60-STSX	\$1,012.00	60	24
WT24S72-STSX	\$1,149.00	72	24
WT24S84-STSX	\$1,326.00	84	24
WT24S96-STSX	\$1,605.00	96	24
WT24S108-STSX	\$1,653.00	108	24
WT24S120-STSX	\$1,782.00	120	24
WITH GALVANIZED UNDER SHELF			
WT30S30-STGX	\$747.00	30	30
WT30S36-STGX	\$809.00	36	30
WT30S48-STGX	\$949.00	48	30
WT30S60-STGX	\$1,100.00	60	30
WT30S72-STGX	\$1,261.00	72	30
WT30S84-STGX	\$1,456.00	84	30
WT30S96-STGX	\$1,645.00	96	30
WT30S108-STGX	\$1,791.00	108	30
WT30S120-STGX	\$1,991.00	120	30



Optional Accessories



Drawers

- CT-11-1520E \$291.00
\$291.00
Overall size: 15" x 20" x 5"
Polyslide drawer with plastic liner
- CT-11-1520P \$346.00
Overall size: 15" x 20" x 5"
Roller bearing drawer with plastic liner
- CT-11-1520S \$250.00
Overall size: 15" x 20" x 5"
Roller bearing drawer with 18 gauge
300 series stainless steel liner
- CT-11-2020P \$389.00
Overall size: 20" x 20" x 5"
Roller bearing drawer with plastic liner
- CT-11-2020S \$434.00
Overall size: 20" x 20" x 5"
Roller bearing drawer with 18 gauge
300 series stainless steel liner



Casters

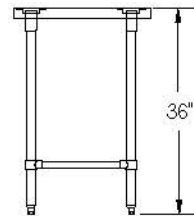
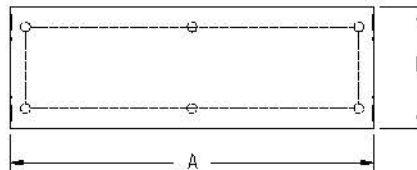
- CT-19-4 \$125.00
Set of 4 casters, two locking, two
non-locking
- CT-19-6 \$190.00
Set of 6 casters, two locking, four
non-locking
- CT-74 \$190.00
Set of 4 casters, two locking, two
non-locking
- CT-75 \$250.00
Set of 6 casters, two locking, four
non-locking

Deluxe Work Table with 4" Backsplash (cont.)

Model	List Price	DIM. IN INCHES	
		A	B
WITH STAINLESS STEEL UNDER SHELF			
WT24S30-BSX	\$777.00	30	24
WT24S36-BSX	\$840.00	36	24
WT24S48-BSX	\$945.00	48	24
WT24S60-BSX	\$1,082.00	60	24
WT24S72-BSX	\$1,215.00	72	24
WT24S84-BSX	\$1,478.00	84	24
WT24S96-BSX	\$1,629.00	96	24
WT24S108-BSX	\$1,729.00	108	24
WT24S120-BSX	\$1,819.00	120	24
WT30S30-BSX	\$815.00	30	30
WT30S36-BSX	\$881.00	36	30
WT30S48-BSX	\$1,021.00	48	30
WT30S60-BSX	\$1,180.00	60	30
WT30S72-BSX	\$1,274.00	72	30
WT30S84-BSX	\$1,649.00	84	30
WT30S96-BSX	\$1,823.00	96	30
WT30S108-BSX	\$2,014.00	108	30
WT30S120-BSX	\$2,182.00	120	30



WT30S72-BSX



Optional Accessories



CT-11-1520S

Drawers

CT-11-1520E \$291.00
\$291.00

Overall size: 15" x 20" x 5"
Polyslide drawer with plastic liner

CT-11-1520P \$346.00

Overall size: 15" x 20" x 5"
Roller bearing drawer with plastic liner

CT-11-1520S \$250.00

Overall size: 15" x 20" x 5"
Roller bearing drawer with 18 gauge
300 series stainless steel liner

CT-11-2020P \$389.00

Overall size: 20" x 20" x 5"
Roller bearing drawer with plastic liner

CT-11-2020S \$434.00

Overall size: 20" x 20" x 5"
Roller bearing drawer with 18 gauge
300 series stainless steel liner

WITH GALVANIZED UNDER SHELF

WT24S30-BGX	\$571.00	30	24
WT24S36-BGX	\$730.00	36	24
WT24S48-BGX	\$747.00	48	24
WT24S60-BGX	\$901.00	60	24
WT24S72-BGX	\$1,016.00	72	24
WT24S84-BGX	\$1,227.00	84	24
WT24S96-BGX	\$1,324.00	96	24
WT24S108-BGX	\$1,559.00	108	24
WT24S120-BGX	\$1,602.00	120	24
WT30S30-BGX	\$618.00	30	30
WT30S36-BGX	\$750.00	36	30
WT30S48-BGX	\$775.00	48	30
WT30S60-BGX	\$996.00	60	30
WT30S72-BGX	\$1,133.00	72	30
WT30S84-BGX	\$1,354.00	84	30
WT30S96-BGX	\$1,466.00	96	30
WT30S108-BGX	\$1,641.00	108	30
WT30S120-BGX	\$1,684.00	120	30



CT-19-4

Casters

CT-19-4 \$125.00
Set of 4 casters, two locking, two
non-locking

CT-19-6 \$190.00
Set of 6 casters, two locking, four
non-locking

CT-74 \$190.00
Set of 4 casters, two locking, two
non-locking

CT-75 \$250.00
Set of 6 casters, two locking, four
non-locking

ELKAY FOODSERVICE — WORK TABLES

Economy Work Table, Flat Top



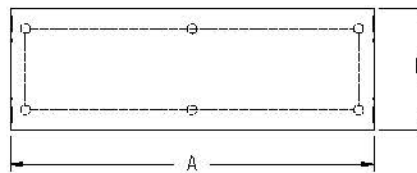
- 18 gauge 304 or 430 series stainless steel
- Two galvanized hat channels per table
- 1 3/8" heavy gauge galvanized tubing with fully adjustable 1" feet
- Available with under shelf
- 18 gauge under shelves are welded to adjustable galvanized leg rings that are secured with allen screws, wrench supplied
- Tables are shipped knocked down
- Work tables larger than 72" have 6 legs
- Carries NSF certification for foodservice application

Model	List Price	DIM. IN INCHES	
		A	B
300 SERIES STAINLESS STEEL			
EWT24S24-STG-4X	\$301.00	24	24
EWT24S30-STG-4X	\$325.00	30	24
EWT24S36-STG-4X	\$350.00	36	24
EWT24S48-STG-4X	\$401.00	48	24
EWT24S60-STG-4X	\$476.00	60	24
EWT24S72-STG-4X	\$592.00	72	24
EWT24S96-STG-4X	\$733.00	96	24

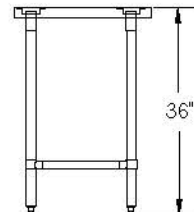


EWT30S72-STG-4X

EWT30S30-STG-4X	\$344.00	30	30
EWT30S36-STG-4X	\$391.00	36	30
EWT30S48-STG-4X	\$460.00	48	30
EWT30S60-STG-4X	\$531.00	60	30
EWT30S72-STG-4X	\$646.00	72	30
EWT30S96-STG-4X	\$848.00	96	30



400 SERIES STAINLESS STEEL			
EWT24S24-STGX	\$253.00	24	24
EWT24S30-STGX	\$276.00	30	24
EWT24S36-STGX	\$296.00	36	24
EWT24S48-STGX	\$338.00	48	24
EWT24S60-STGX	\$403.00	60	24
EWT24S72-STGX	\$466.00	72	24
EWT24S96-STGX	\$579.00	96	24



EWT30S30-STGX	\$301.00	30	30
EWT30S36-STGX	\$330.00	36	30
EWT30S48-STGX	\$371.00	48	30
EWT30S60-STGX	\$422.00	60	30
EWT30S72-STGX	\$487.00	72	30
EWT30S96-STGX	\$663.00	96	30

Optional Accessories



CT-11-1520S

Drawers

CT-11-1520E \$291.00

\$291.00

Overall size: 15" x 20" x 5"

Polyslide drawer with plastic liner

CT-11-1520P \$346.00

Overall size: 15" x 20" x 5"

Roller bearing drawer with plastic liner

CT-11-1520S \$250.00

Overall size: 15" x 20" x 5"

Roller bearing drawer with 18 gauge

300 series stainless steel liner

CT-11-2020P \$389.00

Overall size: 20" x 20" x 5"

Roller bearing drawer with plastic liner

CT-11-2020S \$434.00

Overall size: 20" x 20" x 5"

Roller bearing drawer with 18 gauge

300 series stainless steel liner



CT-19-4

Casters

CT-19-4 \$125.00

Set of 4 casters, two locking, two non-locking

CT-19-6 \$190.00

Set of 6 casters, two locking, four non-locking

CT-74 \$190.00

Set of 4 casters, two locking, two non-locking

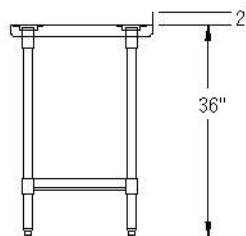
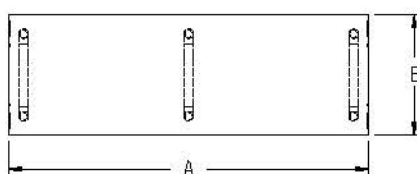
CT-75 \$250.00

Set of 6 casters, two locking, four non-locking

Economy Work Table, Flat Top with 2" Turn Up

Model	List Price	DIM. IN INCHES	
		A	B
300 SERIES STAINLESS STEEL			
EWT24S24-STG-24X	\$301.00	24	24
EWT24S30-STG-24X	\$325.00	30	24
EWT24S36-STG-24X	\$350.00	36	24
EWT24S48-STG-24X	\$401.00	48	24
EWT24S60-STG-24X	\$476.00	60	24
EWT24S72-STG-24X	\$592.00	72	24
EWT24S96-STG-24X	\$733.00	96	24
EWT30S30-STG-24X	\$344.00	30	30
EWT30S36-STG-24X	\$391.00	36	30
EWT30S48-STG-24X	\$460.00	48	30
EWT30S60-STG-24X	\$531.00	60	30
EWT30S72-STG-24X	\$646.00	72	30
EWT30S96-STG-24X	\$848.00	96	30

400 SERIES STAINLESS STEEL			
EWT24S24-STG-2X	\$253.00	24	24
EWT24S30-STG-2X	\$276.00	30	24
EWT24S36-STG-2X	\$296.00	36	24
EWT24S48-STG-2X	\$338.00	48	24
EWT24S60-STG-2X	\$403.00	60	24
EWT24S72-STG-2X	\$466.00	72	24
EWT24S96-STG-2X	\$579.00	96	24
EWT30S30-STG-2X	\$301.00	30	30
EWT30S36-STG-2X	\$330.00	36	30
EWT30S48-STG-2X	\$371.00	48	30
EWT30S60-STG-2X	\$422.00	60	30
EWT30S72-STG-2X	\$487.00	72	30
EWT30S96-STG-2X	\$663.00	96	30



Optional Accessories



Drawers

- CT-11-1520E \$291.00
 Overall size: 15" x 20" x 5"
 Polyslide drawer with plastic liner
- CT-11-1520P \$346.00
 Overall size: 15" x 20" x 5"
 Roller bearing drawer with plastic liner
- CT-11-1520S \$250.00
 Overall size: 15" x 20" x 5"
 Roller bearing drawer with 18 gauge
 300 series stainless steel liner
- CT-11-2020P \$389.00
 Overall size: 20" x 20" x 5"
 Roller bearing drawer with plastic liner
- CT-11-2020S \$434.00
 Overall size: 20" x 20" x 5"
 Roller bearing drawer with 18 gauge
 300 series stainless steel liner



Casters

- CT-19-4 \$125.00
 Set of 4 casters, two locking, two
 non-locking
- CT-19-6 \$190.00
 Set of 6 casters, two locking, four
 non-locking
- CT-74 \$190.00
 Set of 4 casters, two locking, two
 non-locking
- CT-75 \$250.00
 Set of 6 casters, two locking, four
 non-locking



ELKAY FOODSERVICE — STANDS

Equipment Stand



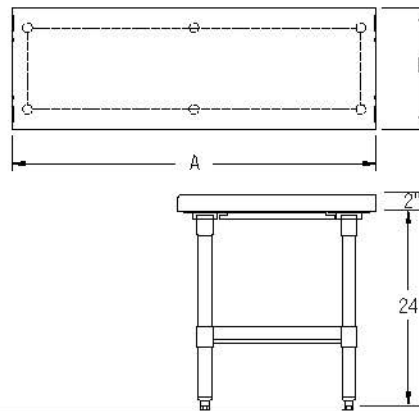
- 16 gauge 304 series stainless steel
- 2" turn up on three sides
- Comes with stainless steel (STSX) or galvanized (STGX) under shelf
- Two galvanized hat channels per stand
- 1½" diameter heavy gauge galvanized tubing with plated galvanized leg gussets and high impact corrosion resistant fully adjustable 1" feet
- Carries NSF certification for foodservice application

Model	List Price	DIM. IN INCHES	
		A	B
WITH STAINLESS STEEL UNDER SHELF			
SES30S36-STSX	\$701.00	36	30
SES30S48-STSX	\$794.00	48	30
SES30S60-STSX	\$930.00	60	30
SES30S72-STSX	\$1,147.00	72	30

Model	List Price	DIM. IN INCHES	
		A	B
WITH GALVANIZED UNDER SHELF			
SES30S36-STGX	\$530.00	36	30
SES30S48-STGX	\$639.00	48	30
SES30S60-STGX	\$741.00	60	30
SES30S72-STGX	\$885.00	72	30



SES30S36-STSX



Optional Accessories



CT-19-4

Casters

- CT-19-4 \$125.00
Set of 4 casters, two locking, two non-locking
- CT-19-6 \$190.00
Set of 6 casters, two locking, four non-locking
- CT-74 \$190.00
Set of 4 casters, two locking, two non-locking
- CT-75 \$250.00
Set of 6 casters, two locking, four non-locking

Mixer Stand



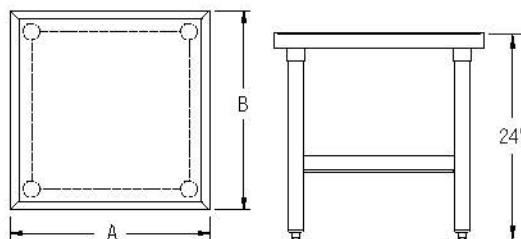
- 16 gauge 304 series stainless steel
- Comes with stainless steel (STSX) or galvanized (STGX) under shelf
- Two galvanized hat channels per stand and marine edge on all sides
- 1½" diameter heavy gauge galvanized tubing with plated galvanized leg gussets and high impact corrosion resistant fully adjustable 1" feet
- NSF certified

Model	List Price	DIM. IN INCHES	
		A	B
WITH STAINLESS STEEL UNDER SHELF			
MS24S24-STSX	\$930.00	24	24
MS24S30-STSX	\$980.00	30	24
MS30S30-STSX	\$1,034.00	30	30

Model	List Price	DIM. IN INCHES	
		A	B
WITH GALVANIZED UNDER SHELF			
MS24S24-STGX	\$816.00	24	24
MS24S30-STGX	\$854.00	30	24
MS30S30-STGX	\$895.00	30	30



MS24S30-STSX



Optional Accessories



CT-19-4

Casters

- CT-19-4 \$125.00
Set of 4 casters, two locking, two non-locking
- CT-19-6 \$190.00
Set of 6 casters, two locking, four non-locking
- CT-74 \$190.00
Set of 4 casters, two locking, two non-locking
- CT-75 \$250.00
Set of 6 casters, two locking, four non-locking

ELKAY FOODSERVICE — STORAGE

Microwave Shelves

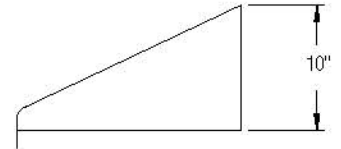
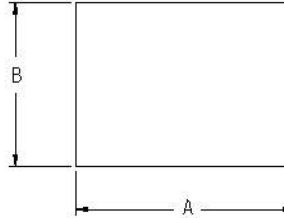
- 18 gauge 430 series stainless steel
- Wall brackets Included
- NSF certified



WMMS-18-24X



Model	List Price	DIM. IN INCHES	
		A	B
WMMS-18-24X	\$334.00	20	18
WMMS-24-24X	\$379.00	24	24



Economy Wall Shelves

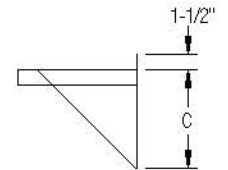
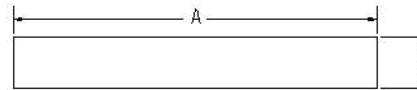
- 18 gauge 430 series stainless steel
- Wall brackets included
- Shipped knocked down
- NSF certified



EWMS-12-36X



Model	List Price	DIM. IN INCHES		
		A	B	C
EWMS-12-24X	\$131.00	24	12	10
EWMS-12-36X	\$151.00	36	12	10
EWMS-12-48X	\$169.00	48	12	10
EWMS-12-60X	\$182.00	60	12	10
EWMS-12-72X	\$219.00	72	12	10
EWMS-12-84X	\$285.00	84	12	10
EWMS-12-96X	\$311.00	96	12	10
EWMS-14-24X	\$148.00	24	14	12
EWMS-14-36X	\$172.00	36	14	12
EWMS-14-48X	\$198.00	48	14	12
EWMS-14-60X	\$234.00	60	14	12
EWMS-14-72X	\$269.00	72	14	12
EWMS-14-84X	\$311.00	84	14	12
EWMS-14-96X	\$341.00	96	14	12



Slant Racks

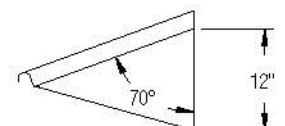
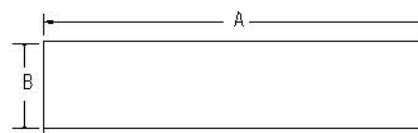
- 18 gauge 304 series stainless steel
- Wall brackets included
- Shipped knocked down
- NSF certified



SLANT-42X



Model	List Price	DIM. IN INCHES	
		A	B
SLANT-21X	\$282.00	21	20
SLANT-42X	\$374.00	42	20
SLANT-63X	\$459.00	63	20
SLANT-84X	\$481.00	84	20



ELKAY FOODSERVICE — STORAGE

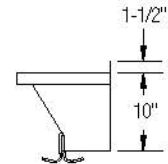
Wall Shelves with Pot Rack



- 18 gauge 304 series stainless steel
- ¼" x 2" stainless steel flat bar pot rack
- Pot hooks (1 per foot)
- Shipped knocked down
- Does not include mounting hardware
- Carries NSF certification for foodservice application



Model	List Price	DIM. IN INCHES	
		A	B
SLW-S-48X	\$443.00	48	12
SLW-S-60X	\$479.00	60	12
SLW-S-72X	\$599.00	72	12

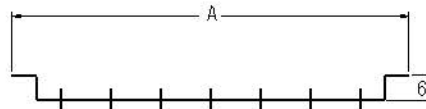


Line Pot Racks

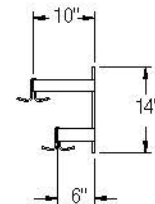
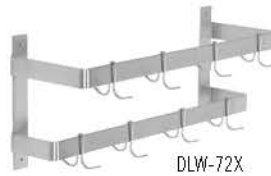


- ¼" x 2" stainless steel flat bar pot rack
- Pot hooks (1 per foot)
- Does not include mounting hardware
- Carries NSF certification for foodservice application

Model	List Price	DIM. IN INCHES	
		A	B
SINGLE LINE			
SLW-48X	\$286.00	48	6
SLW-60X	\$316.00	60	6
SLW-72X	\$406.00	72	6



Model	List Price	DIM. IN INCHES	
		A	B
DOUBLE LINE			
DLW-48X	\$675.00	48	6
DLW-60X	\$728.00	60	6
DLW-72X	\$781.00	72	6



Pot Hooks

CT-136 \$6.00
Single prong pot hooks - Ea.



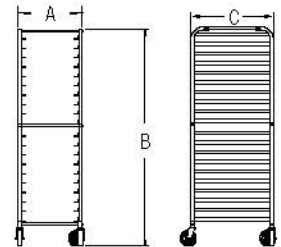
CT-137 \$8.00
Double prong pot hooks - Ea.



Aluminum Pan Rack

- Reinforced gussets ensure strength and durability for medium duty commercial use
- 20 pan capacity
- Available as end load (APR1820-LX) or side load (APR1826-LX)
- 5" polyurethane casters with swivel stems
- Heavy duty 6063 aluminum
- Uprights and runners are fully welded
- Vertical posts are 1" square aluminum tubing (.063" thick)
- Replacement casters available
- Ships knocked down (assembly required)

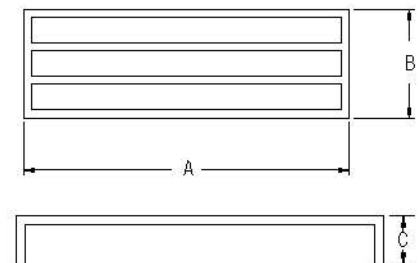
Model	List Price	DIM. IN INCHES		
		A	B	C
APR1820-LX	\$408.00	20 $\frac{1}{4}$	69	26
APR1826-LX	\$332.00	28 $\frac{3}{8}$	69	18



Aluminum Dunnage Rack

- Sturdy construction ensures strength and durability in any environment
- Load capacity of 1500 lbs
- Available in 8" or 12" heights
- High impact plastic feet included
- Heavy duty 6063 aluminum
- Top is constructed of 1 $\frac{1}{2}$ " x 1 $\frac{1}{2}$ " x $\frac{3}{8}$ " square aluminum tubing welded horizontally on 4 $\frac{1}{2}$ " centers
- Legs are 1 $\frac{1}{2}$ " x 1 $\frac{1}{2}$ " x $\frac{3}{8}$ " mitered aluminum
- Great for use in coolers and freezers

Model	List Price	DIM. IN INCHES		
		A	B	C
ADR362008-MX	\$114.00	36	20	8
ADR482008-MX	\$131.00	48	20	8
ADR602008-MX	\$149.00	60	20	8
ADR362012-MX	\$122.00	36	20	12
ADR482012-MX	\$138.00	48	20	12
ADR602012-MX	\$158.00	60	20	12
ADR362408-MX	\$117.00	36	24	8
ADR482408-MX	\$134.00	48	24	8
ADR602408-MX	\$151.00	60	24	8
ADR362412-MX	\$125.00	36	24	12
ADR482412-MX	\$141.00	48	24	12
ADR602412-MX	\$163.00	60	24	12



ELKAY FOODSERVICE — RETHERMALIZERS

No texture or flavor changes and will not overheat or burn!

- Elegantly simple design with extra large capacity
- Ideal for soups, pastas, potatoes, proteins, and more
- Due to pouches being segregated, beneficial for special diets
- Significant labor and footprint reduction
- Utilized nationally by chain restaurants, convenience stores, healthcare facilities and casinos

Construction details

- 16 Gauge 304 stainless steel
- Hot water bath technology for greater heat transfer efficiency
- 208V, 3 Phase, 9000W, 25.0 Amps
- Faucet included
- Digital thermometer display
- Hood is not required

Sliding

Clam Shell Rack

SIZE (W x L x H)	MODEL NUMBER	LIST
26 x 34 x 30	RTC-16-SL	\$15,409
26 x 34 x 30	RTC-16-SL-CS	\$15,724

RTC-16 has 10 - 3" clam shell racks and 6 - 2" clam shell racks
CS suffix applies to castors

Pouch Basket System

SIZE (W x L x H)	MODEL NUMBER	LIST
26 x 34 x 30	RTB-14-SL	\$12,731
26 x 34 x 30	RTB-14-SL-CS	\$13,073

RTB-14 holds 1 - 8 pouch rack and 1 - 6 pouch rack
CS suffix applies to castors



RTB-14-SL

Hinged Lid

Energy efficient and more hygienic

Pouch Basket System

SIZE (W x L x H)	MODEL NUMBER	LIST
26 x 34 x 30	HRTB-14-SL	\$12,731
26 x 34 x 30	HRTB-14-SL-CS	\$13,073

HRTB-14 holds 1 - 8 pouch rack and 1 - 6 pouch rack
CS suffix applies to castors

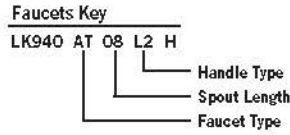


HRTB-14-SL

ELKAY FOODSERVICE — FAUCETS

Faucet Handle Options

- Choice of 3 handle options
- Quarter turn ceramic disk cartridge
- Solid brass construction with chrome finish
- 2.2 GPM vandal-resistant aerator standard with .5 GPM insert included
- Includes spout swing restriction pin
- Replacement cartridge 45923C for cold and 45924C for hot
- ½" NPT female inlets



3" – 8" Adjustable Centers



- Choice of 3 handle options
- Choice of 5 spout styles
- Quarter turn ceramic disc cartridge
- Solid brass construction
- 2.2 GPM vandal-resistant aerator standard with 1.5 and .5 GPM insert included
- Chrome finish
- Includes spout swing restriction pin
- Replacement cartridge 45923C for cold and 45924C for hot
- ½" NPT female inlets with 2" offset
- NSF/ANSI 61 Certified

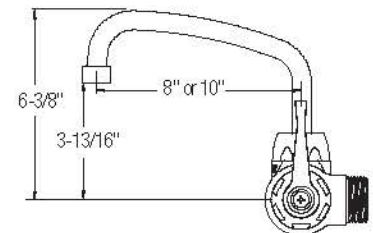
Arc Tube Spout

LK945AT08L2T

\$281.00



LK945AT08L2T



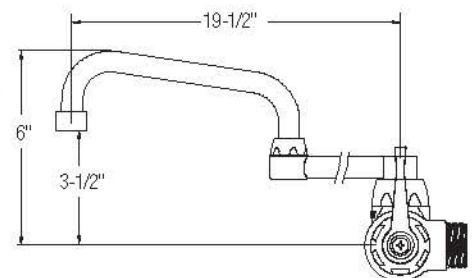
Double Swing Spout

LK945DS20L2T

\$310.00



LK945DS20L2T



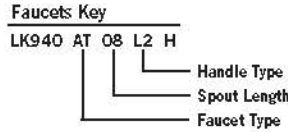
LK945DS20L2T

ELKAY FOODSERVICE — COMMERCIAL FAUCETS

8" Centerset, Wall Mount



- Choice of 3 handle options: 2" lever and 4" or 6" wristblade
- Quarter turn ceramic disk cartridge
- Solid brass construction
- 2.2 GPM vandal-resistant aerator standard with .5 GPM insert included
- Chrome finish
- Includes spout swing restriction pin
- Replacement cartridge 45923C for cold and 45924C for hot
- 1/2" NPT female inlets
- NSF/ANSI 61 Certified
- elkay.com/faucets

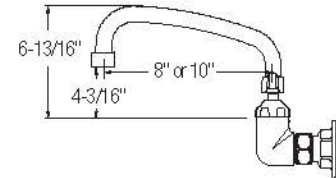


Arc Tube Spout

LK940AT08L2H **\$261.00**



LK940AT08L2H



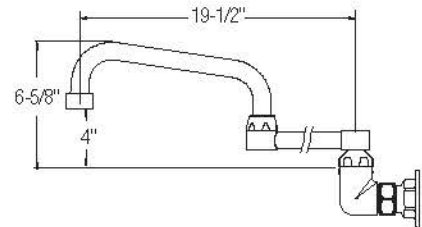
LK940AT08L2H

Double Swing Spout

LK940DS20L2H **\$288.00**



LK940DS20L2H



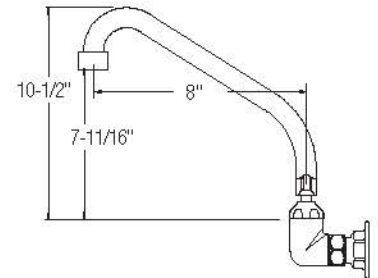
LK940DS20L2H

High Arc Spout

LK940HA08L2H **\$269.00**



LK940HA08L2H



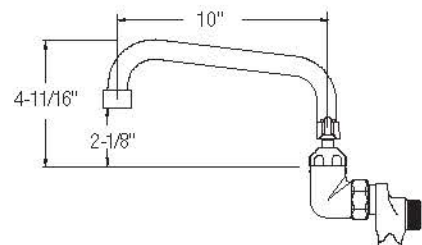
LK940HA08L2H

Tube Spout

LK940TS08L2H **\$265.00**



LK940TS08L2H



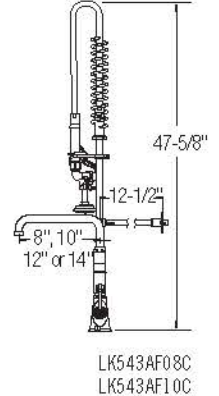
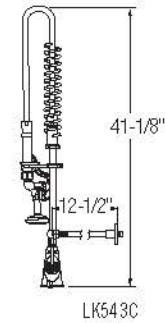
LK940TS08L2H

Pre-Rinse

- 2" lever handles
- Self closing valve
- Quarter turn ceramic disc cartridge
- Solid brass construction
- 3.2 GPM spray head; 1.2 GPM spray head on low flow models
- 44" flexible stainless steel hose; 60" hose on LK960 models
- Insulated handle
- Chrome finish
- Spouts come with 2.2 GPM vandal-resistant aerator standard with 1.5 and .5 GPM insert included
- elkay.com/faucets

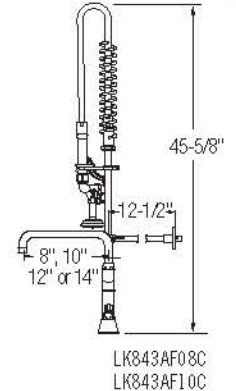
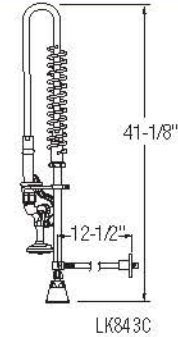
Single Hole, Concealed Deck

LK543C	\$483.00
LK543AF08C	\$585.00
LK543AF10C	\$604.00
LK543AF12C	\$624.00
LK543AF14C	\$644.00
LOW FLOW MODELS (1.2 GPM)	
LK543LC	\$483.00
LK543AF08LC	\$568.00
LK543AF10LC	\$604.00
LK543AF12LC	\$624.00
LK543AF14LC	\$644.00



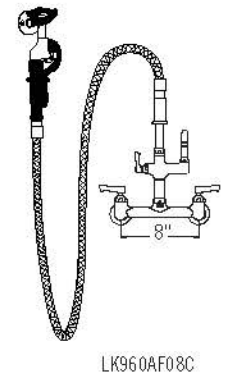
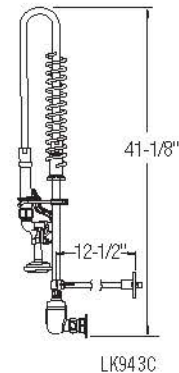
8" Centerset, Exposed Deck

LK843C	\$544.00
LK843AF08C	\$646.00
LK843AF10C	\$664.00
LK843AF12C	\$684.00
LK843AF14C	\$704.00
LOW FLOW MODELS (1.2 GPM)	
LK843LC	\$528.00
LK843AF08LC	\$627.00
LK843AF10LC	\$645.00
LK843AF12LC	\$684.00
LK843AF14LC	\$704.00



8" Centerset, Wall Mount

LK943C	\$522.00
LK943AF08C	\$659.00
LK943AF10C	\$678.00
LK943AF12C	\$698.00
LK943AF14C	\$718.00
LK960AF08C	\$746.00
LK960AF10C	\$764.00
LK960AF12C	\$784.00
LK960AF14C	\$804.00
LOW FLOW MODELS (1.2 GPM)	
LK943LC	\$507.00
LK943AF08LC	\$640.00
LK943AF10LC	\$658.00
LK943AF12LC	\$698.00
LK943AF14LC	\$718.00
LK960AF08LC	\$746.00
LK960AF10LC	\$764.00
LK960AF12LC	\$784.00
LK960AF14LC	\$804.00



ELKAY FOODSERVICE — COMMERCIAL FAUCETS

Electronic, Deck and Wall Mount



- Dual power AC and battery
- Adjustable sensor range
- Gooseneck spout
- 2.0 GPM laminar flow aerator
- Chrome plated finish
- Solid brass construction
- Vandal-resistant and water-resistant sensor control module
- Adjustable shut-off delay
- Adjustable time-out feature
- NSF/ANSI 61 Certified
- elkay.com/faucets

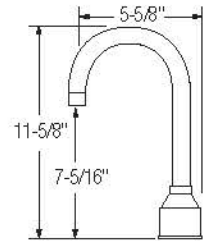
Deck Mount

LKB721C

\$745.00



LK723
Mixing Valve
See page 384



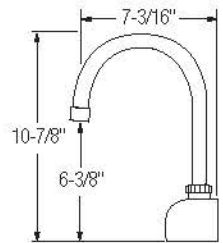
Wall Mount

LKB722C

\$761.00



LK723
Mixing Valve
See page 384



4" Centerset with Exposed Deck

- ◆ Choice of 3 handle options
- ◆ Choice of 4 spout styles
- ◆ Quarter turn ceramic disc cartridge
- ◆ Solid brass construction
- ◆ 2.2 GPM vandal-resistant aerator standard with 1.5 and .5 GPM insert included
- ◆ Chrome finish
- ◆ Includes spout swing restriction pin
- ◆ Replacement cartridge 45923C for cold and 45924C for hot
- ◆ NSF/ANSI 61 Certified

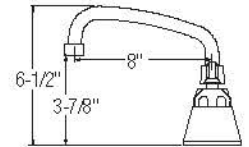
Arc Tube Spout

LK406AT08L2
LK406AT08T4

\$212.00
\$229.00



LK406AT08L2



LK406AT08L2



LK406AT08T4

Gooseneck Spout

LK406GN04L2
LK406GN08L2

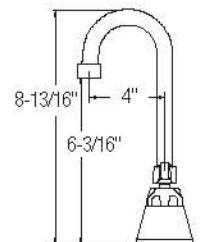
\$199.00
\$205.00



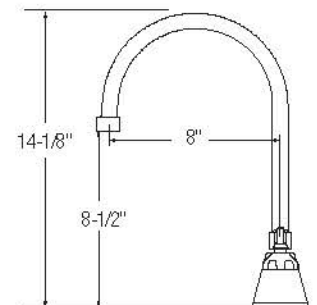
LK406GN04L2



LK406GN08L2



LK406GN04L2



LK406GN08L2

ELKAY FOODSERVICE — COMMERCIAL FAUCETS

4" Centerset with Exposed Deck (cont.)

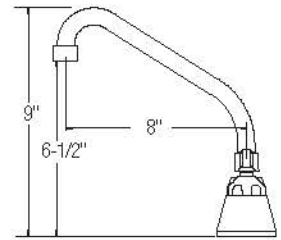
High Arc Spout

LK406HA08L2

\$219.00



LK406HA08L2



LK406HA08L2

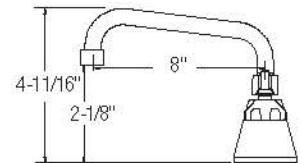
Tube Spout

LK406TS08L2

\$214.00



LK406TS08L2



LK406TS08L2

Single Hole with Concealed Deck

- Dual Control
- Choice of 3 handle options
- Choice of 3 spout options
- Quarter turn ceramic disc cartridge
- Solid brass construction
- 2.2 GPM vandal-resistant aerator standard with 1.5 and .5 GPM insert included
- Chrome finish
- Includes spout swing restriction pin
- Replacement cartridge 45923C for cold and 45924C for hot
- NSF/ANSI 61 Certified

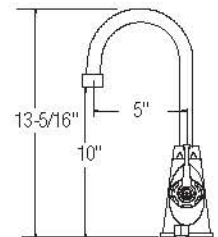
Gooseneck Spout

LK500GN05L2

\$231.00



LK500GN05L2



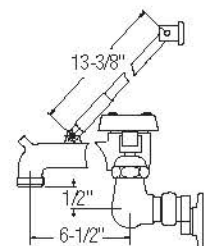
LK500GN05L2

8" Centerset, Wall Mount

- Quarter turn ceramic disc cartridge
- Solid brass construction
- Rough chrome finish
- NSF/ANSI 61 Certified

LKB940C 

\$235.00



ELKAY FOODSERVICE — ACCESSORIES

SENSOR-OPERATED ACCESSORY

LK723 **\$302.00**



- ◆ Anti-scald thermostatic mixing valve
- ◆ Nickel plated brass body
- ◆ ½" SWT inlets and outlet connections
- ◆ Check valves on inlets
- ◆ Mixed temperature range of 80°-120°
- ◆ Certified under ASSE 1016

DRAWERS

CT-11-1520E **\$250.00**
CT-11-1520P **\$291.00**
CT-11-1520S **\$346.00**
CT-11-2020P **\$389.00**
CT-11-2020S **\$434.00**



CT-11-1520S

- ◆ Compatible with our work tables
- CT-11-1520E
Overall size: 15" x 20" x 5"
Polyslide drawer with plastic liner
- CT-11-1520P
Overall size: 15" x 20" x 5"
Roller bearing drawer with plastic liner
- CT-11-1520S
Overall size: 15" x 20" x 5"
Roller bearing drawer with 18 gauge 300 series stainless steel liner
- CT-11-2020P
Overall size: 20" x 20" x 5"
Roller bearing drawer with plastic liner
- CT-11-2020S
Overall size: 20" x 20" x 5"
Roller bearing drawer with 18 gauge 300 series stainless steel liner

RACK SLIDE

RS-20 **\$115.00**



- ◆ 18 gauge 300 series stainless steel
- ◆ Compatible with all of our dish tables
- ◆ Carries NSF certification for foodservice application

RACK SLIDE WITH BASKET

RSPB-20 **\$250.00**
RSSB-20 **\$425.00**



RSPB-20

RSSB-20



- ◆ Compatible with all of our dish tables
 - ◆ Carries NSF certification for foodservice application
 - ◆ Tub size: 20" x 20" x 5"
- RSPB-20
18 gauge 300 series stainless steel rack slide with plastic basket
- RSSB-20
18 gauge 300 series stainless steel rack slide with stainless steel basket

MOP SINK ACCESSORIES

LK402 **\$34.00**



- ◆ Black heavy duty rubber hose
- ◆ 36" long
- ◆ Standard female hose connection on one end

LK403 **\$138.00**



- ◆ Stainless steel mop holder for FLR mop sinks
- ◆ Wall mount
- ◆ 3 station

LK404 **\$27.00**



- ◆ Stainless steel hose hanger for FLR mop sinks

CASTERS

CT-19-4 **\$125.00**
CT-19-6 **\$190.00**



- ◆ 4" swivel stem casters
- ◆ Locking and non-locking
- ◆ Compatible with work tables, equipment stands and mixer stands

CT-19-4
Set of 4 casters, two locking, two non-locking

CT-19-6
Set of 6 casters, two locking, four non-locking

CT-74 **\$190.00**
CT-75 **\$250.00**



- ◆ 5" heavy duty casters
- ◆ Locking and non-locking
- ◆ Compatible with work tables, equipment stands and mixer stands

CT-74
Set of 4 casters, two locking, two non-locking

CT-75
Set of 6 casters, two locking, four non-locking

ROTARY WASTE DRAINS

LK24RT **\$143.00**



- ◆ Rotary lever operated
- ◆ 4½" O.D. top stainless steel flange with brass body
- ◆ Stainless steel perforated grid and lever arm
- ◆ Chrome plated brass tailpiece

LK24RT
1½" O.D. x 4" tailpiece

LK25RT
2" O.D. x 4" tailpiece

ELKAY FOODSERVICE — CUSTOM SOLUTIONS, BACK TO FRONT

Creating Value in partnerships

Realize the possibilities Elkay's Custom Solutions team can do for your next front or back of house project. We act as a member of each client's construction team, tailoring to meet both their immediate and future needs.

Back of House Stainless

Dedicated bidding and drafting team that understands your specific needs.

- ◆ Quotes & Drawings Available
- ◆ Installation of Buyout Items
- ◆ Material Integrations
- ◆ Optimal Lead Time

Contact us today at 800-726-0553

Send quotes to bidseast@elkay.com
or bidswest@elkay.com



DISCOVER - Our Front of House Capabilities Today!

Solution Driven Service

Achieve your design and delivery goals by partnering with your designer from concept through completion.

- ◆ Engineering & Project Management
- ◆ Millwork, veneer, stone, die walls, tables & booths, counters and more
- ◆ Vast Manufacturing Capabilities
- ◆ Large Distribution Network
- ◆ Proven international partner to top chain accounts

Contact us today:
Phone: 877-504-5764
elkaymillwork.com



ALL PRICING, TERMS AND SPECIFICATIONS ARE SUBJECT TO CHANGE WITHOUT NOTICE

Order Placement

- The Elkay Foodservice Customer Care Department is here to assist, open Monday – Friday at 1-800-726-0553.
- All PO's are acknowledged upon receipt within 24 hours. If you have not received an acknowledgement for your PO, please contact Customer Care immediately.

Request for Bid or Custom Quotes

- Elkay Foodservice offers a wide variety of modification options, product built to spec and pure custom solutions. Contact Elkay Foodservice Products today, and ask for the Bid Team.

Caution: Freight Claims

- Before accepting any shipment, examine it carefully and note any damage or shortages on the bill of lading PRIOR to signing for delivery.
- All claims for shortage or damage must be filed with the carrier. Title passes from Elkay Foodservice Products, LLC to the purchaser at the Point of Origin of the shipment.
- If after receipt of shipment, concealed damage is discovered, immediately notify the delivering carrier requesting immediate inspection. The inspection report should be used to support your claims against the carrier.
- Missing items, damage, or concealed damage must be reported within 14 days of receipt of product.

Return Shipments

- We will not accept any returned merchandise unless a written authorization has been issued. Any claims for defective materials or workmanship should be mailed to the factory. Cancellations are not accepted on orders in transit or custom products. All orders are subject to acceptance by our office.
- Unused, non-custom items in their Original Packaging may be returned, freight pre-paid, within 30 days of purchase. You must call Elkay Foodservice Products, LLC to receive your Return Merchandise Authorization (RMA). Authorized returned goods will be subject to a 30% restocking charge. Elkay Foodservice Products, LLC reserves the right to deny returned merchandise that does not meet the above requirements.

Warranty

- The only warranty, expressed or implied, is a 1 year guarantee against defect in workmanship and material. This warranty does not apply to damages which may result from neglect, accidental or intentional damage, damage or wear to any swivel mechanism, normal wear and tear, misuse of product, unauthorized repair, exposure to extremes in temperature and humidity, and alteration or abuse of the product.
- Factory obligation under this warranty, is limited, at the option of Elkay Foodservice Products, LLC to repair or replace the product (one of equal type and quality if the product is no longer available), within 90 days after the receipt of written recommendation from the dealer, provided none of the above exceptions are evident. This warranty applies strictly to the equipment and does not include service or labor of any kind, including without limitation, expenses related to labor or service for plumbing connections, installations, or removal.
- Elkay Foodservice Products, LLC shall not be liable for any loss or damage arising from use, or for consequential damages. This warranty gives certain legal rights and there may be other rights that vary from state to state.

Payment Terms

- Standard payment terms are Net 30 days after shipment, upon Approved Credit. Interest is charged at 18% per annum on past due balances. Credit card orders will be billed to your account prior to shipment of the product.

Disclaimer: Although every attempt has been made to ensure the accuracy of the information provided, we cannot be held responsible for typographical or printing errors. Information and specifications are subject to change without notice. Please confirm at time of order.



ELKAY®

**foodservice
products**

The leadership and vision of Elkay's founders has been maintained for over 90 years, providing premier customer service, innovation and higher quality than our competitors. We invite you to learn more about our products and services.

Global Elkay Sales Network

Our national sales presence and extensive dealer base provide excellent service and convenience. For the name of your nearest Elkay Foodservice Sales Representative or Dealer visit us on the web or call 800-726-0553.

Visit elkayfoodservice.com

- Product specification sheets
- Current literature
- Warranty information

For information on all other Elkay products visit elkay.com



Scan this code with your smartphone to learn more about Elkay's Foodservice Products



Scan this code with your smartphone to access our Facebook page



Contact Information

Elkay Foodservice Products
Phone: 800.726.0553
Fax: 509.535.1493
421 N. Freya
Spokane, WA 99202

Elkay Foodservice Europe
Windmolen 22
7609 NN Almelo
Phone: +31 548 659 040
Fax: +31 546 660 001
Email: europe@elkayfoodservice.com